

SLED9078 - BARRA DE LED 18WM 1800K 90



As barras de LED, com potências de 18W e 23W, foram desenvolvidas para uma aplicação de alta performance. Possuem 120 ou 240 LEDs por metro, 8 temperaturas de cor e ainda a possibilidade de Tunable White. Na versão Tunable White, as temperaturas de cor vão de 1800K até 9000K e podem ser customizadas para intervalos de TCC específicos.

Fluxo luminoso – 1150 lm/m

Potência – 18,2 W/m

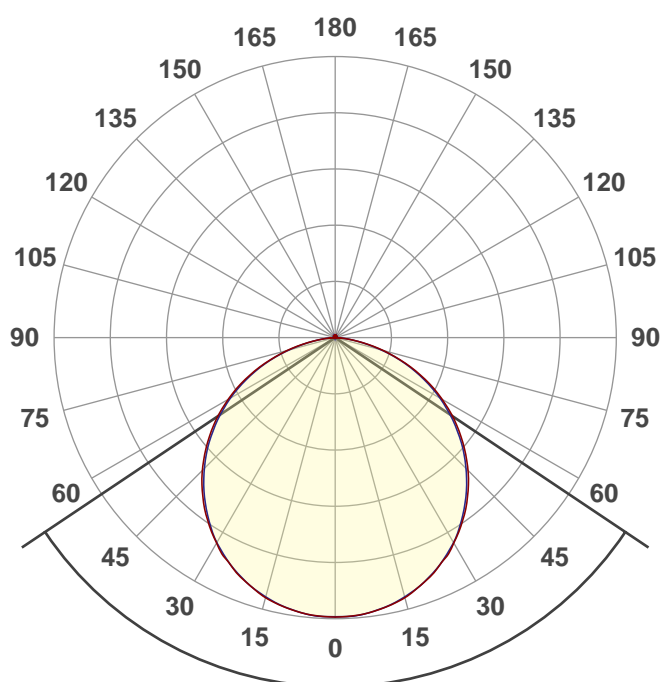
Intensidade pico – 404cd

CCT – 1834K



IRC – 95,2

Coordenada CIE 1931 – x- 0,546 y- 0,409



Facho de abertura

112,4°

Data do ensaio

10/04/2023 14:21:14

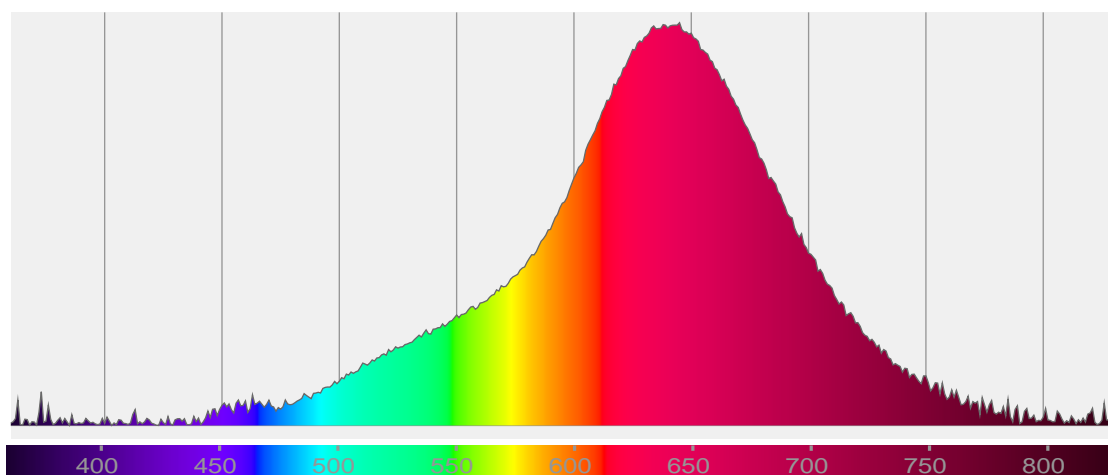
Rf 94,2

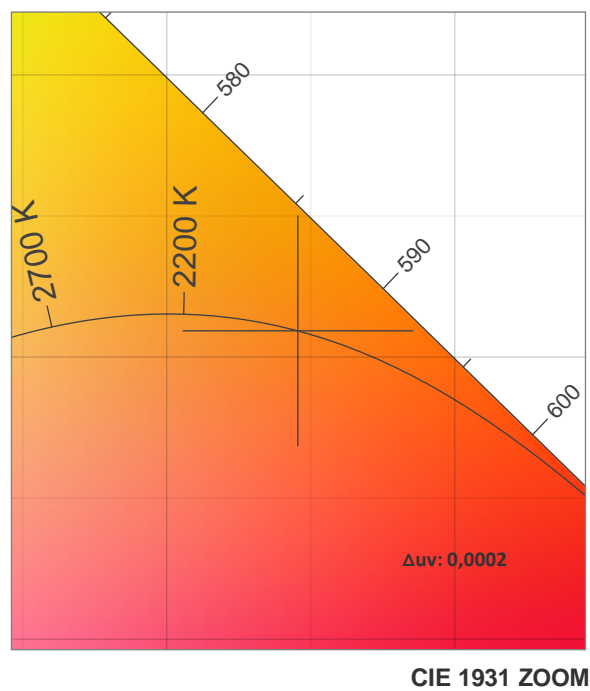
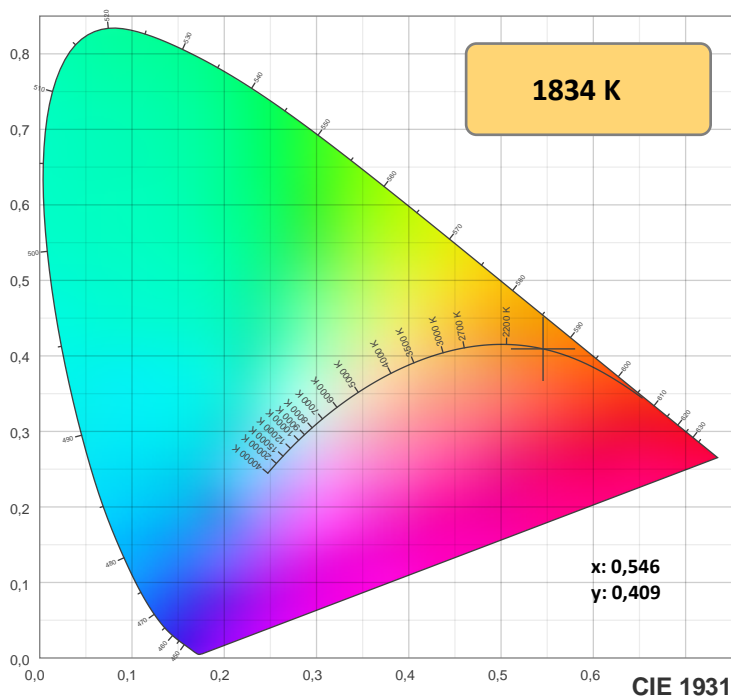
Fidelity index Rf

Rg 98,5

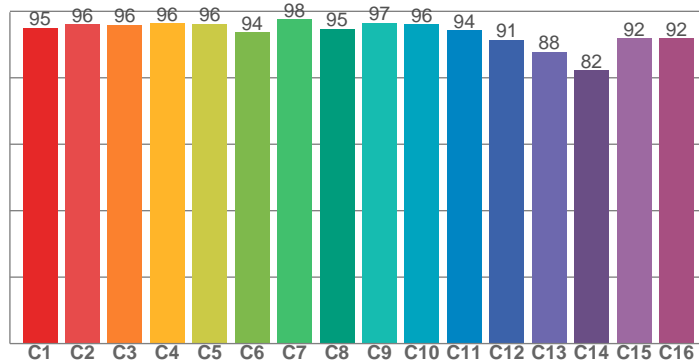
Gamut index Rg

Hue Bin	R _f	Shifts (%)	
		Chroma	Hue
1	95	-2%	1%
2	96	-1%	1%
3	96	0%	-2%
4	96	-2%	-1%
5	96	-2%	1%
6	94	1%	5%
7	98	0%	2%
8	95	3%	2%
9	97	2%	0%
10	96	1%	-1%
11	94	2%	-3%
12	91	2%	-6%
13	88	0%	-12%
14	82	-5%	-17%
15	92	-4%	-4%
16	92	-5%	-3%

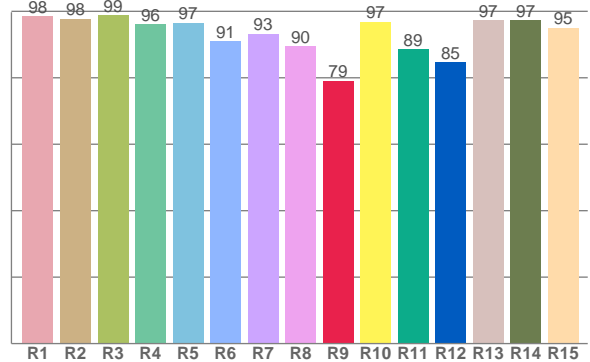




TM-30: 94,2



CRI: 95,2 (R1-R8)



CRiRa R1-R8 / CRiRe R1-R15

R1	R2	R3	R4	R5	R6	R7	R8	R9	R10	R11	R12	R13	R14	R15
98,5	97,8	98,8	96,2	96,6	91,0	93,2	89,5	79,1	96,9	88,7	84,7	97,3	97,3	95,0

TM30 valores C. 16 valores extraídos dos 99.

C1	C2	C3	C4	C5	C6	C7	C8	C9	C10	C11	C12	C13	C14	C15	C16
94,9	96,1	95,9	96,4	96,3	93,6	97,6	94,8	96,6	96,1	94,3	91,4	87,9	82,3	91,8	91,9

Parametros de cor

Temperatura de cor	Índice de reprodução de cor	Reprodução de cor vermelho R9	Color fidelity	Color gamut	Color quality scale	Coordenada de cor cie 1931	Coordenada de cor cie 1931	Coordenada de cor	Coordenada de cor	Color deviation from black body
CCT	IRC	CRI R9	TM30 Rf	TM30 Rg	CQS	x	y	u	v	Δuv
1834 K	95,2	79,1	94,2	98,5	78,3	0,546	0,409	0,320	0,360	0,0002

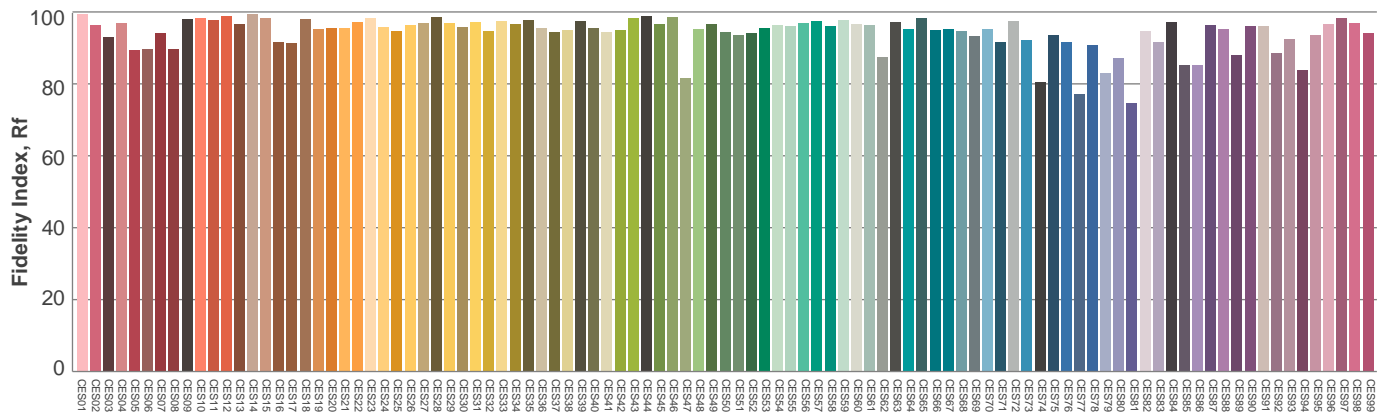
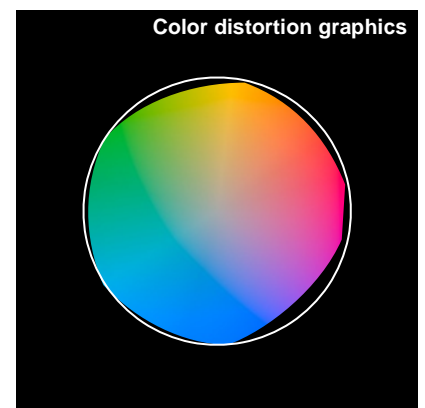
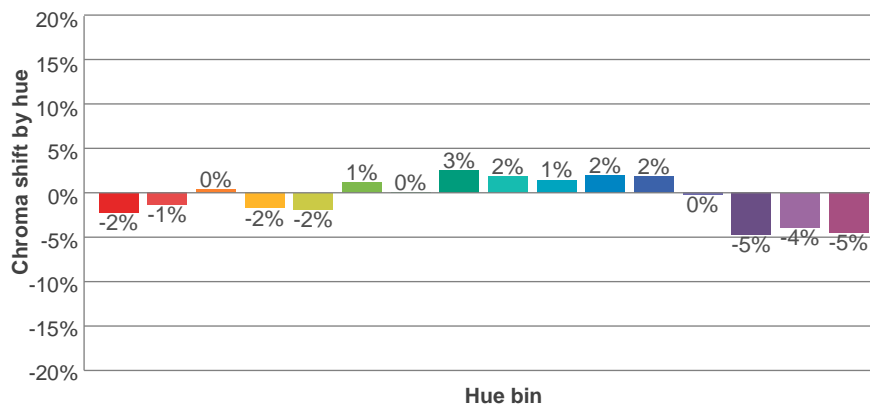
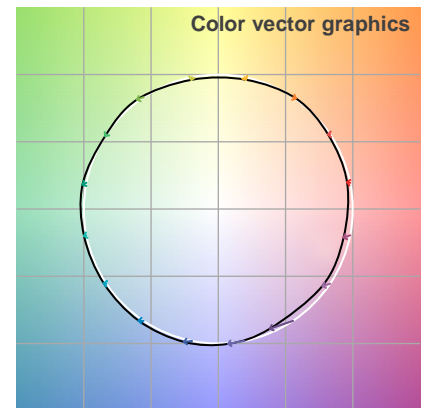
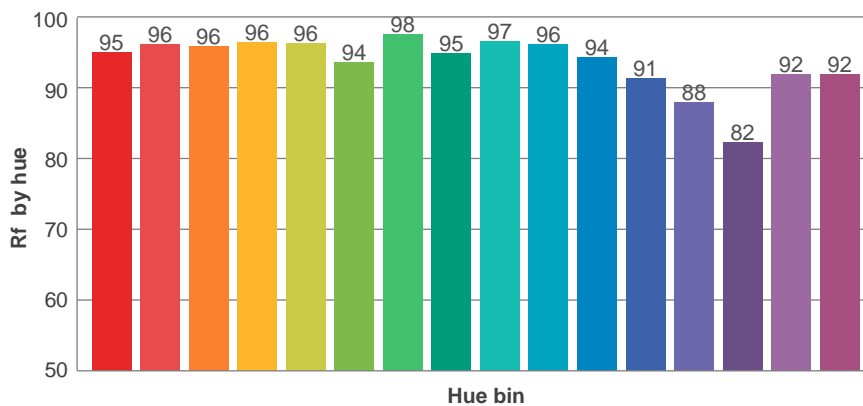
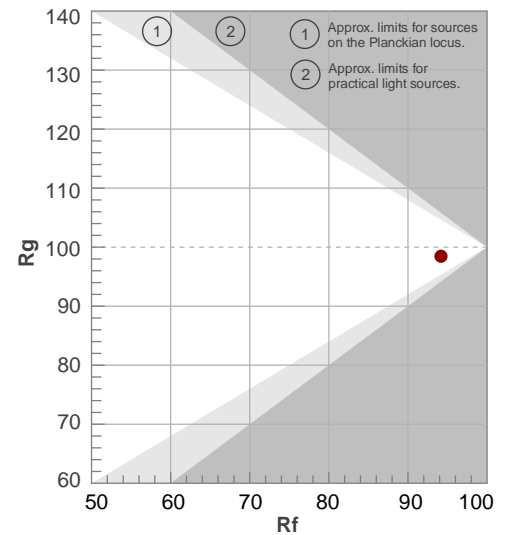
Rf 94,2

Fidelity index Rf

Rg 98,5

Gamut index Rg

Hue Bin	R _f	Shifts (%)	
		Chroma	Hue
1	95	-2%	1%
2	96	-1%	1%
3	96	0%	-2%
4	96	-2%	-1%
5	96	-2%	1%
6	94	1%	5%
7	98	0%	2%
8	95	3%	2%
9	97	2%	0%
10	96	1%	-1%
11	94	2%	-3%
12	91	2%	-6%
13	88	0%	-12%
14	82	-5%	-17%
15	92	-4%	-4%
16	92	-5%	-3%



Avaliação todas as amostras de cores

Glare Evaluation According to UGR

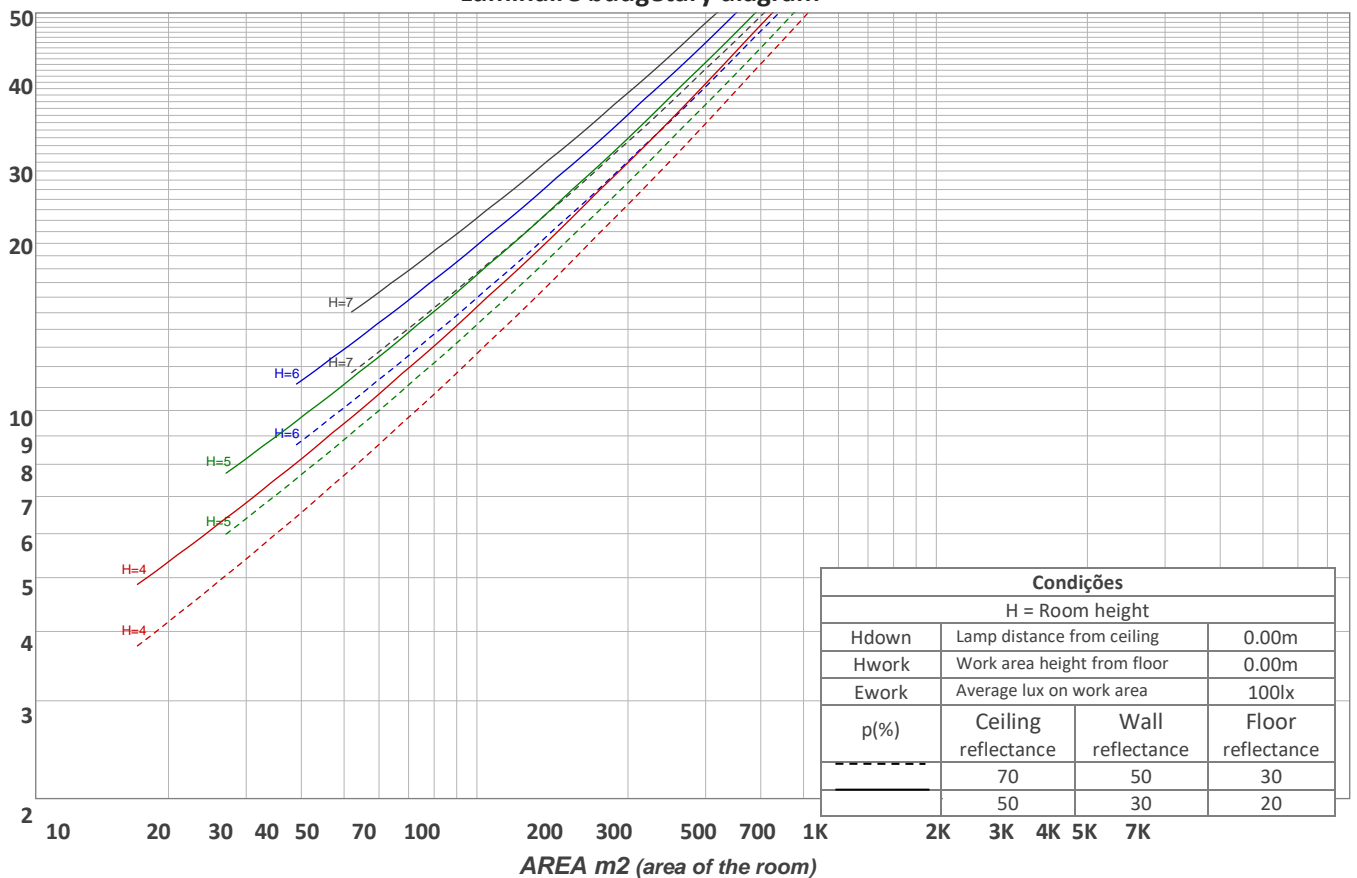
p Ceiling		70	70	50	50	30	70	70	50	50	30
p Walls		50	30	50	30	30	50	30	50	30	30
p Floor		20	20	20	20	20	20	20	20	20	20
Room size X Y		Viewing direction at right angles to lamp axis					Viewing direction parallel to lamp axis				
2H	2H	22,5	23,7	22,8	24,1	24,3	22,6	23,8	22,8	24,1	24,4
	3H	23,9	25,1	24,3	25,4	25,6	24,0	25,2	24,4	25,5	25,7
	4H	24,4	25,6	24,8	25,9	26,1	24,5	25,7	24,9	26,0	26,3
	6H	24,8	25,8	25,1	26,1	26,5	24,9	25,9	25,2	26,2	26,6
	8H	24,8	25,8	25,2	26,1	26,6	25,0	26,0	25,3	26,3	26,7
	12H	24,8	25,8	25,2	26,1	26,6	25,0	25,9	25,3	26,3	26,8
4H	2H	23,1	24,3	23,5	24,6	24,9	23,1	24,3	23,6	24,6	24,9
	3H	24,8	25,7	25,1	26,1	26,5	24,8	25,8	25,2	26,2	26,6
	4H	25,3	26,2	25,7	26,6	27,2	25,4	26,3	25,9	26,7	27,3
	6H	25,7	26,5	26,2	26,9	27,3	25,8	26,7	26,3	27,0	27,4
	8H	25,8	26,5	26,3	26,9	27,3	25,9	26,7	26,4	27,1	27,5
	12H	25,8	26,4	26,3	26,9	27,4	25,9	26,6	26,4	27,0	27,5
8H	4H	25,5	26,3	26,0	26,7	27,1	25,6	26,4	26,1	26,8	27,2
	6H	26,0	26,6	26,5	27,1	27,6	26,1	26,7	26,6	27,2	27,8
	8H	26,2	26,7	26,7	27,2	27,9	26,3	26,8	26,8	27,4	28,0
	12H	26,2	26,7	26,8	27,2	27,8	26,4	26,8	27,0	27,3	28,0
12H	4H	25,5	26,2	26,0	26,6	27,1	25,6	26,2	26,1	26,7	27,2
	6H	26,1	26,6	26,6	27,1	27,8	26,2	26,7	26,7	27,2	27,9
	8H	26,2	26,6	26,8	27,2	27,8	26,3	26,8	26,9	27,3	27,9
Variation of the observer position for the luminaire distance S											
S = 1.0H		0,1 / -0,1					0,1 / -0,1				
S = 1.5H		0,2 / -0,3					0,2 / -0,3				
S = 2.0H		0,5 / -0,6					0,5 / -0,6				
Standard table		n/a					n/a				
Correction summand		n/a					n/a				
Corrected glare indices referring to 1150 lm total luminous flux											

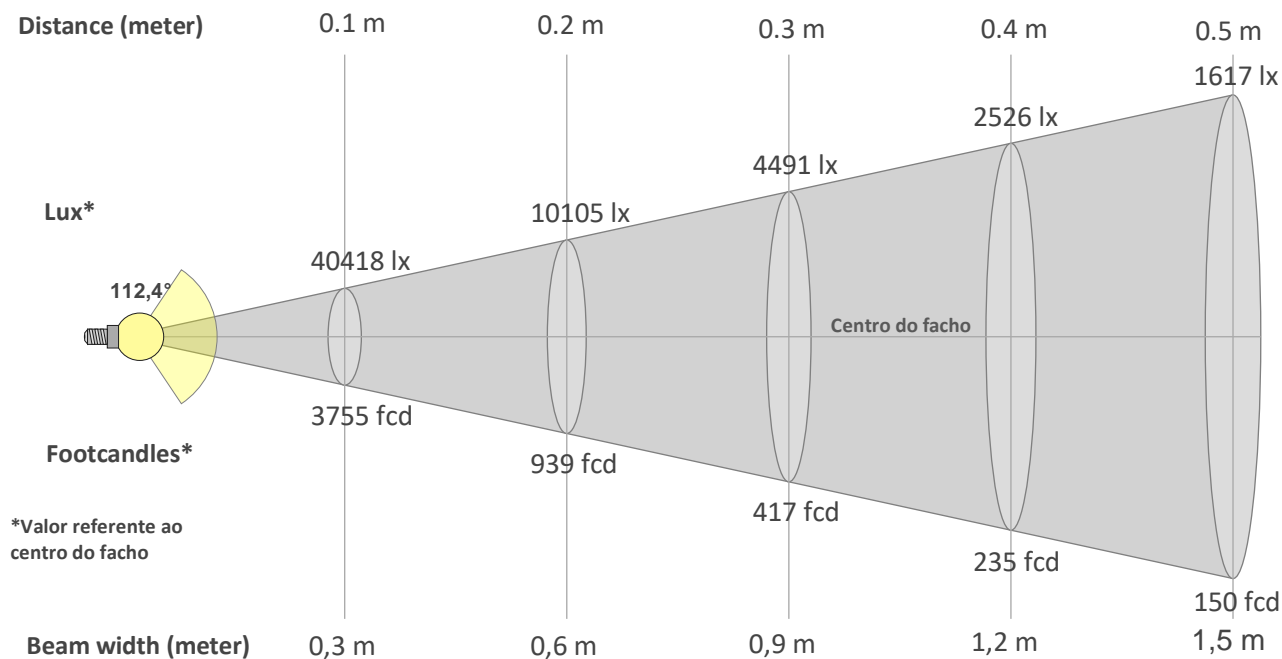
Coeficiente de utilização

Ceiling reflectance	80				70				50			30			10			0
Wall reflectance	70	50	30	10	70	50	30	10	50	30	10	50	30	10	50	30	10	0
Floor reflectance	20	20	20	20	20	20	20	20	20	20	20	20	20	20	20	20	20	0
RCR	(RCR: Room Cavity Ratio) Room Values are expressed as percentage of Lumens delivered to the task surface																	
0	119	119	119	119	116	116	116	116	111	111	111	106	106	106	101	101	101	99
1	109	104	100	96	106	102	98	94	97	94	91	93	91	88	90	87	86	83
2	99	91	84	78	96	89	83	77	85	80	75	82	77	74	79	75	72	70
3	90	80	72	65	88	78	71	64	75	68	63	72	67	62	69	65	61	59
4	83	71	62	55	80	69	61	55	67	59	54	64	58	53	62	57	52	50
5	76	63	54	47	74	62	53	47	60	52	46	58	51	46	56	50	45	43
6	70	57	48	41	68	56	47	41	54	46	41	52	45	40	50	44	40	38
7	65	51	43	36	63	51	42	36	49	41	36	47	41	36	46	40	35	33
8	60	47	38	33	59	46	38	32	45	37	32	43	37	32	42	36	32	30
9	56	43	35	29	55	42	34	29	41	34	29	40	33	29	39	33	29	27
10	53	40	32	26	52	39	32	26	38	31	26	37	31	26	36	30	26	24

Quantidade de luminárias

Luminaire budgetary diagram





Beam intensities from 1-20m

1m	2m	3m	4m	5m	6m	7m	8m	9m	10m	11m	12m	13m	14m	15m	16m	17m	18m	19m	20m
3,3ft	6,6ft	9,8ft	13,1ft	16,4ft	19,7ft	23ft	26,2ft	29,5ft	32,8ft	36,1ft	39,4ft	42,7ft	45,9ft	49,2ft	52,5ft	55,8ft	59,1ft	62,3ft	65,6ft
404lx	101lx	45lx	25lx	16lx	11lx	8lx	6lx	5lx	4lx	3lx	3lx	2lx	2lx	2lx	2lx	1lx	1lx	1lx	1lx
37,5fcd	9,4fcd	4,2fcd	2,3fcd	1,5fcd	1fcd	0,8fcd	0,6fcd	0,5fcd	0,4fcd	0,3fcd	0,3fcd	0,2fcd	0,2fcd	0,2fcd	0,1fcd	0,1fcd	0,1fcd	0,1fcd	0,1fcd

Intensities in 0° c-plane

0°	5°	10°	15°	20°	25°	30°	35°	40°	45°	50°	55°	60°	65°	70°	75°	80°	85°	90°	95°
404	403	398	389	377	361	343	322	298	272	242	212	179	144	108	72	38	12	2	1
100%	100%	98%	96%	93%	89%	85%	80%	74%	67%	60%	52%	44%	36%	27%	18%	9%	3%	0%	0%

Intensities in 90° c-plane

0°	5°	10°	15°	20°	25°	30°	35°	40°	45°	50°	55°	60°	65°	70°	75°	80°	85°	90°	95°
404	403	397	388	376	361	342	320	295	268	239	208	175	140	105	69	36	12	2	2
100%	100%	98%	96%	93%	89%	85%	79%	73%	66%	59%	51%	43%	35%	26%	17%	9%	3%	0%	0%

Intensities in 180° c-plane

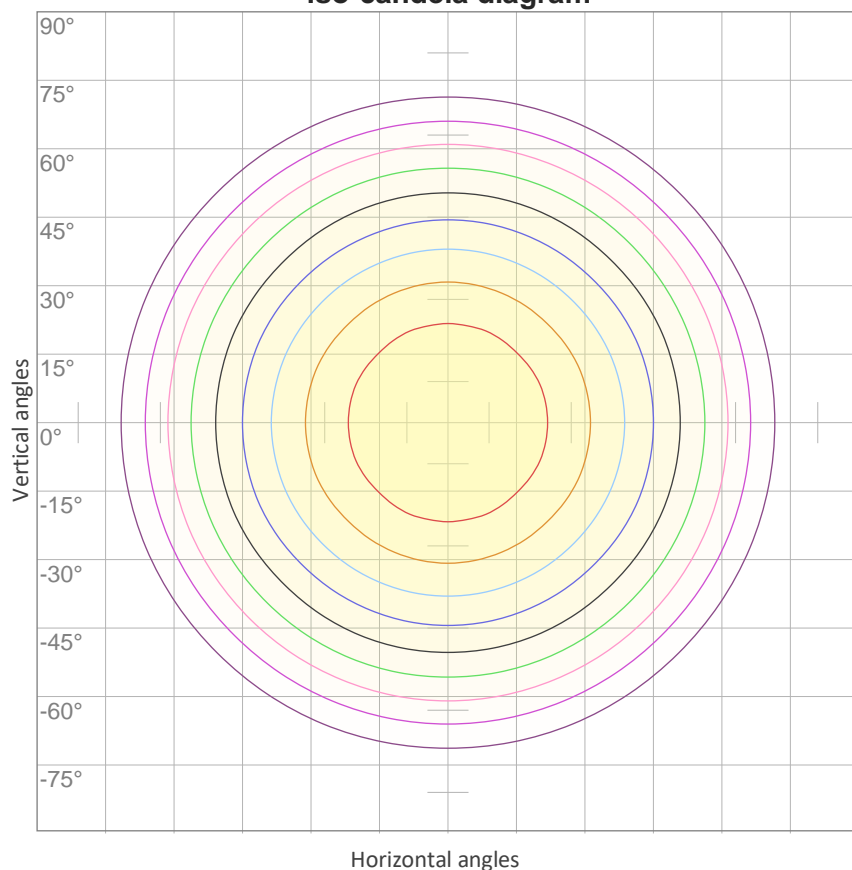
0°	5°	10°	15°	20°	25°	30°	35°	40°	45°	50°	55°	60°	65°	70°	75°	80°	85°	90°	95°
404	403	398	389	377	361	343	322	298	272	242	212	179	144	108	72	38	12	2	1
100%	100%	98%	96%	93%	89%	85%	80%	74%	67%	60%	52%	44%	36%	27%	18%	9%	3%	0%	0%

Intensities in 270° c-plane

0°	5°	10°	15°	20°	25°	30°	35°	40°	45°	50°	55°	60°	65°	70°	75°	80°	85°	90°	95°
404	403	397	388	376	361	342	320	295	268	239	208	175	140	105	69	36	12	2	2
100%	100%	98%	96%	93%	89%	85%	79%	73%	66%	59%	51%	43%	35%	26%	17%	9%	3%	0%	0%

Beam angle 50%	Field angle 10%	Cutoff angle 2,5%	Intensity ratio in 120° cone	Intensity ratio in 90° cone
112,4°	158,9°	170,9°	79,1%	53,8%

iso-candela diagram



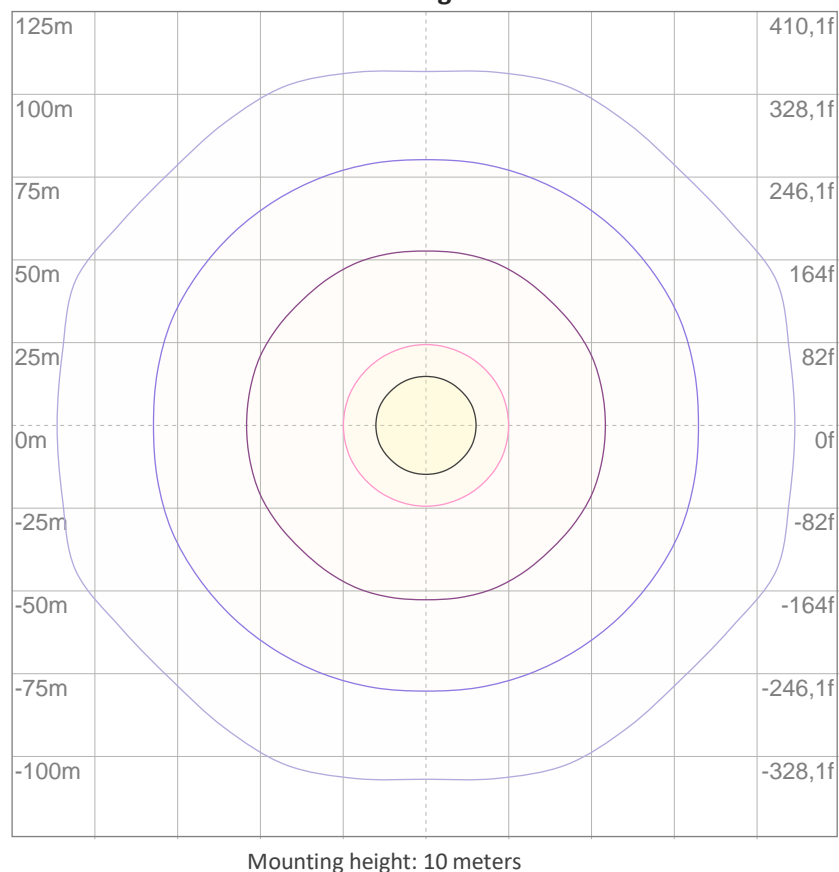
10%	40 cd
20%	81 cd
30%	121 cd
40%	162 cd
50%	202 cd
60%	243 cd
70%	283 cd
80%	323 cd
90%	364 cd

Conditions:

Number of c-planes: 16

Candela at center: 404 cd

iso-lux diagram



3%	0,121 lx
5%	0,202 lx
10%	0,404 lx
30%	1,21 lx
50%	2,02 lx

Conditions:

Number of c-planes: 16

Lux at center: 4,04 lx

Lux distribution on a surface when lamp is mounted at 10 meters from the surface.

Potência

Vttagem: 12,0 V

Corrente: 1,52 A

Frequência: 0 Hz

FP: 1,0

THD



THD corrente: n/a

THD tensão: n/a