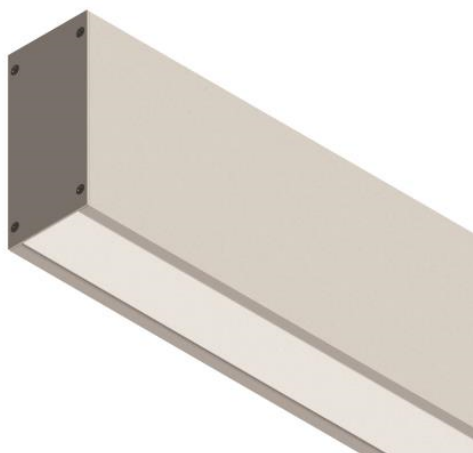


## W96 SLED9006 BRANCA FITA 14,4WM 4000K 80 - 1m



Luminária linear de sobrepor na parede com iluminação difusa. Corpo em alumínio extrudado com acabamento na cor branca. Difusor em acrílico extrudado leitoso. Indicado para residência, recepção, escritório etc.

Fluxo luminoso – 992 lm/m

Potência – 13,9 W/m

Intensidade pico – 361cd

CCT – 3966K



IRC – 82,1

Coordenada CIE 1931 – x- 0,384 y- 0,384

A x L - 96x46

Peso - 1,43kg/m

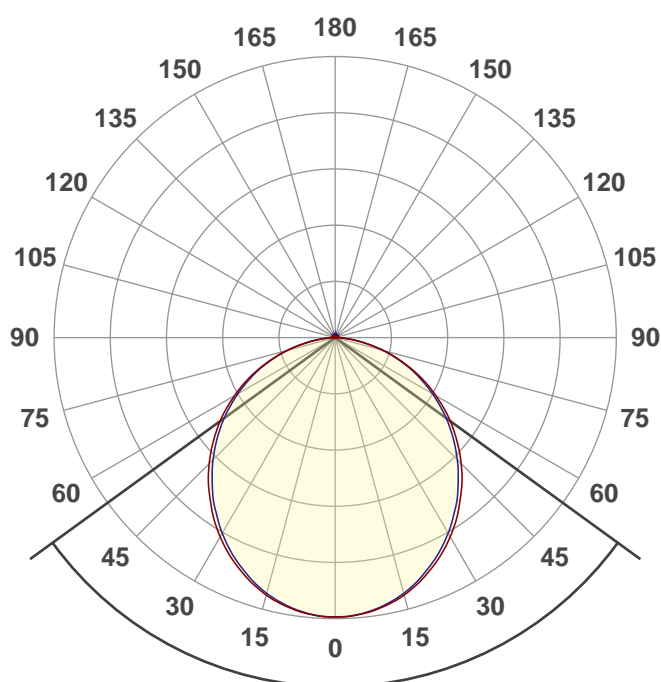
IP - 20 - Uso Interno

IK - 00 – Não aplicável

Alimentação - 12vdc

Data do ensaio

25/11/2020 08:46:57



Facho de abertura

**108°**

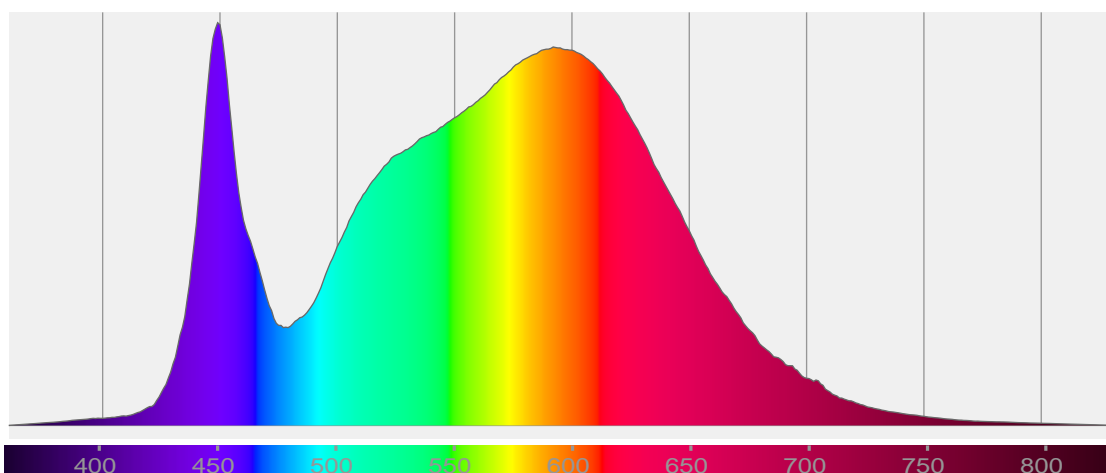
**Rf 83,9**

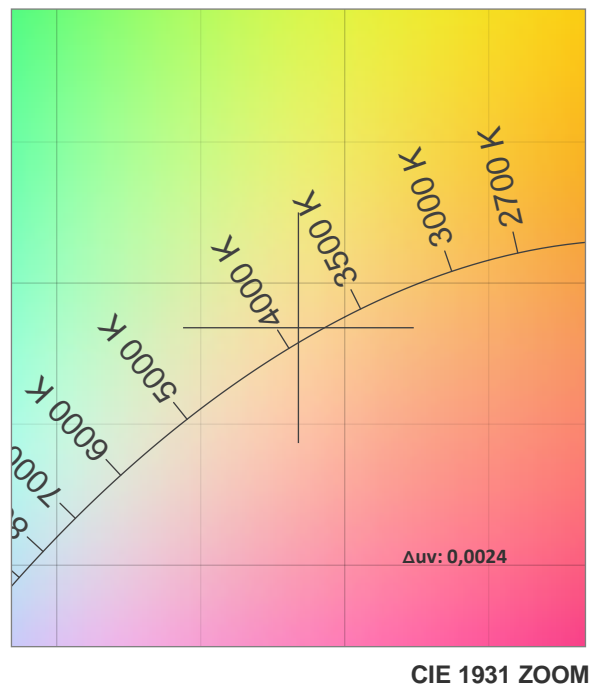
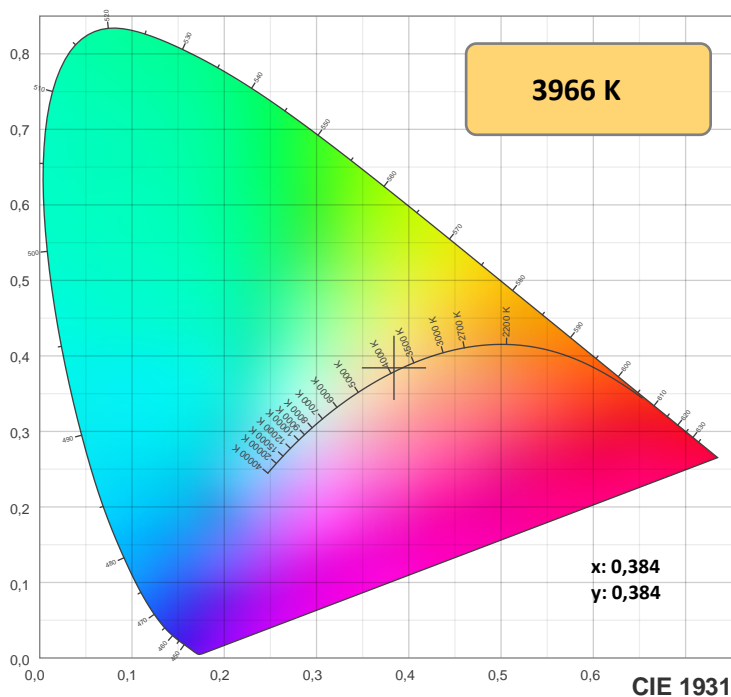
Fidelity index Rf

**Rg 95,9**

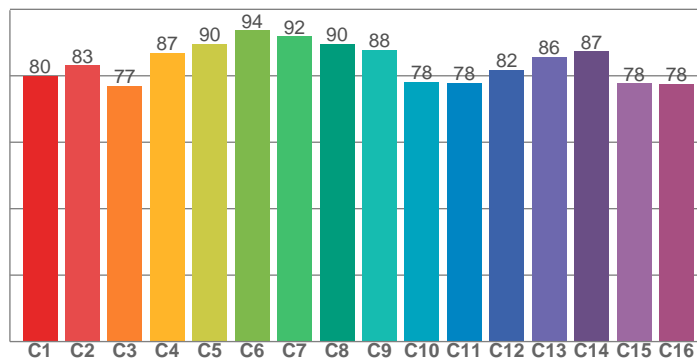
Gamut index Rg

Hue Bin	R <sub>f</sub>	Shifts (%)	
		Chroma	Hue
1	80	-12%	-1%
2	83	-8%	6%
3	77	-4%	12%
4	87	0%	8%
5	90	2%	5%
6	94	3%	-2%
7	92	-3%	-4%
8	90	-6%	-2%
9	88	-7%	4%
10	78	-8%	11%
11	78	1%	15%
12	82	5%	8%
13	86	8%	-5%
14	87	6%	-7%
15	78	0%	-17%
16	78	-5%	-13%

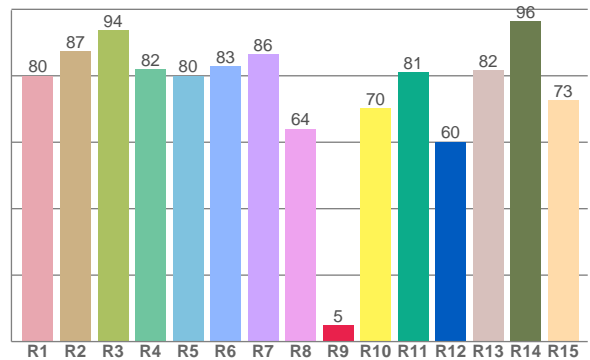




TM-30: 83,9



CRI: 82,1 (R1-R8)



CRIRA R1-R8 / CRIR R1-R15

R1	R2	R3	R4	R5	R6	R7	R8	R9	R10	R11	R12	R13	R14	R15
80,0	87,3	93,6	82,1	80,0	82,9	86,4	64,1	5,0	70,3	81,1	60,2	81,6	96,4	72,6

TM30 valores C. 16 valores extraídos dos 99.

C1	C2	C3	C4	C5	C6	C7	C8	C9	C10	C11	C12	C13	C14	C15	C16
80,0	83,1	77,0	86,9	89,6	93,6	91,9	89,6	87,8	78,2	77,8	81,8	85,8	87,4	77,7	77,6

## Parametros de cor

Temperatura de cor	Índice de reprodução de cor	Reprodução de cor vermelho R9	Color fidelity	Color gamut	Color quality scale	Coordenada de cor cie 1931	Coordenada de cor cie 1931	Coordenada de cor	Coordenada de cor	Color deviation from black body
CCT	IRC	CRI R9	TM30 Rf	TM30 Rg	CQS	x	y	u	v	Δuv
3966 K	82,1	5,0	83,9	95,9	82,1	0,384	0,384	0,224	0,337	0,0024

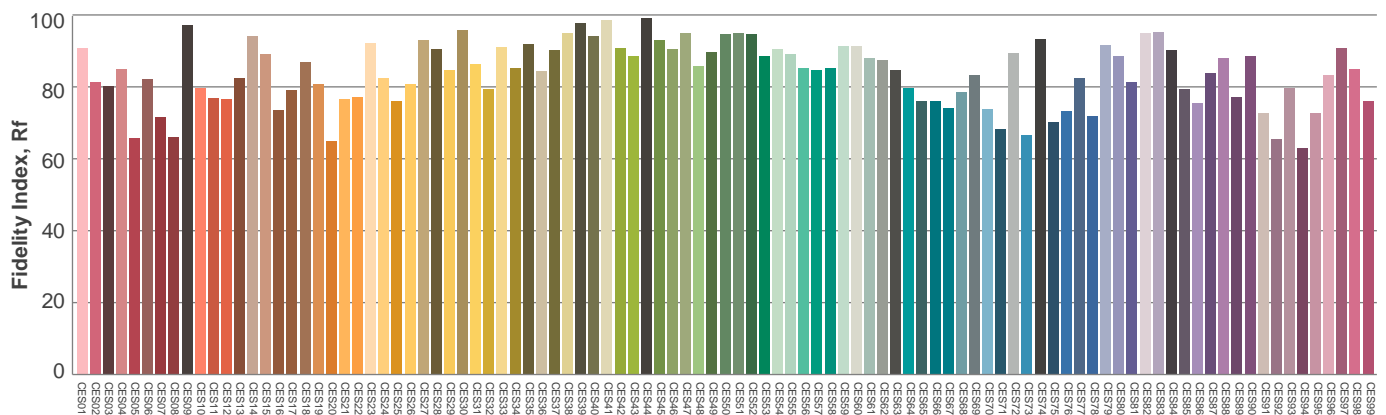
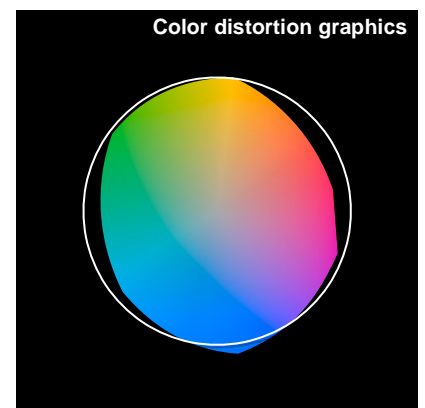
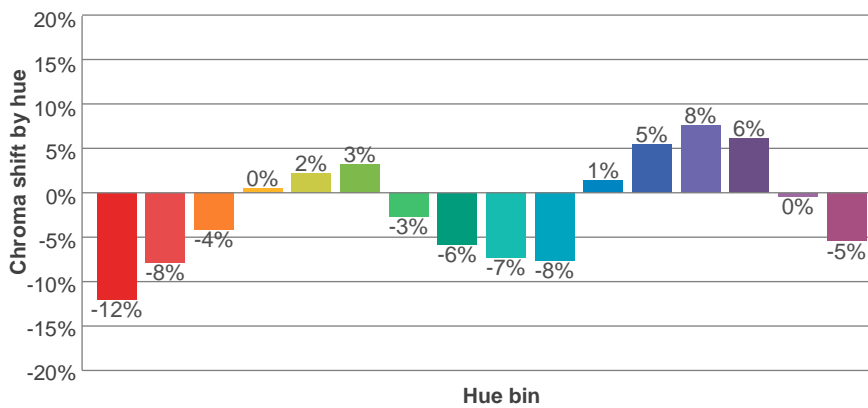
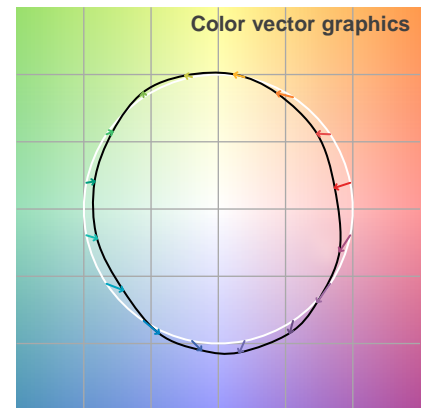
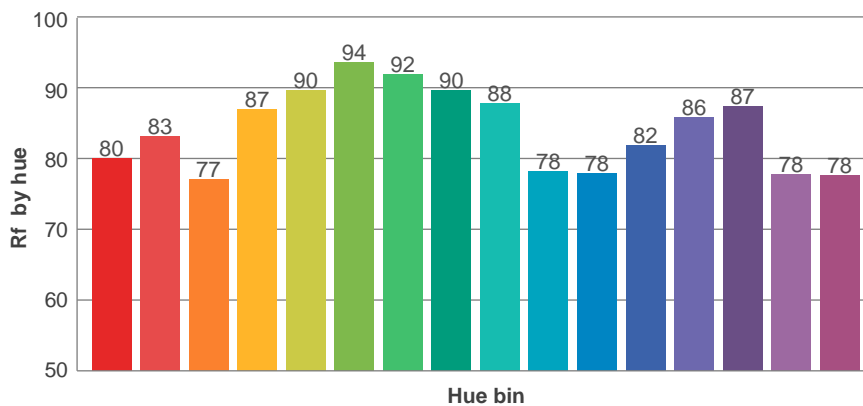
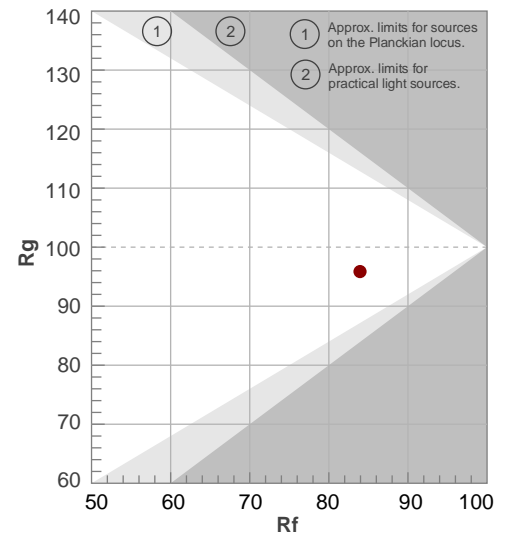
**Rf 83,9**

Fidelity index Rf

**Rg 95,9**

Gamut index Rg

Hue Bin	R <sub>f</sub>	Shifts (%)	
		Chroma	Hue
1	80	-12%	-1%
2	83	-8%	6%
3	77	-4%	12%
4	87	0%	8%
5	90	2%	5%
6	94	3%	-2%
7	92	-3%	-4%
8	90	-6%	-2%
9	88	-7%	4%
10	78	-8%	11%
11	78	1%	15%
12	82	5%	8%
13	86	8%	-5%
14	87	6%	-7%
15	78	0%	-17%
16	78	-5%	-13%



Avaliação todas as amostras de cores

Glare Evaluation According to UGR

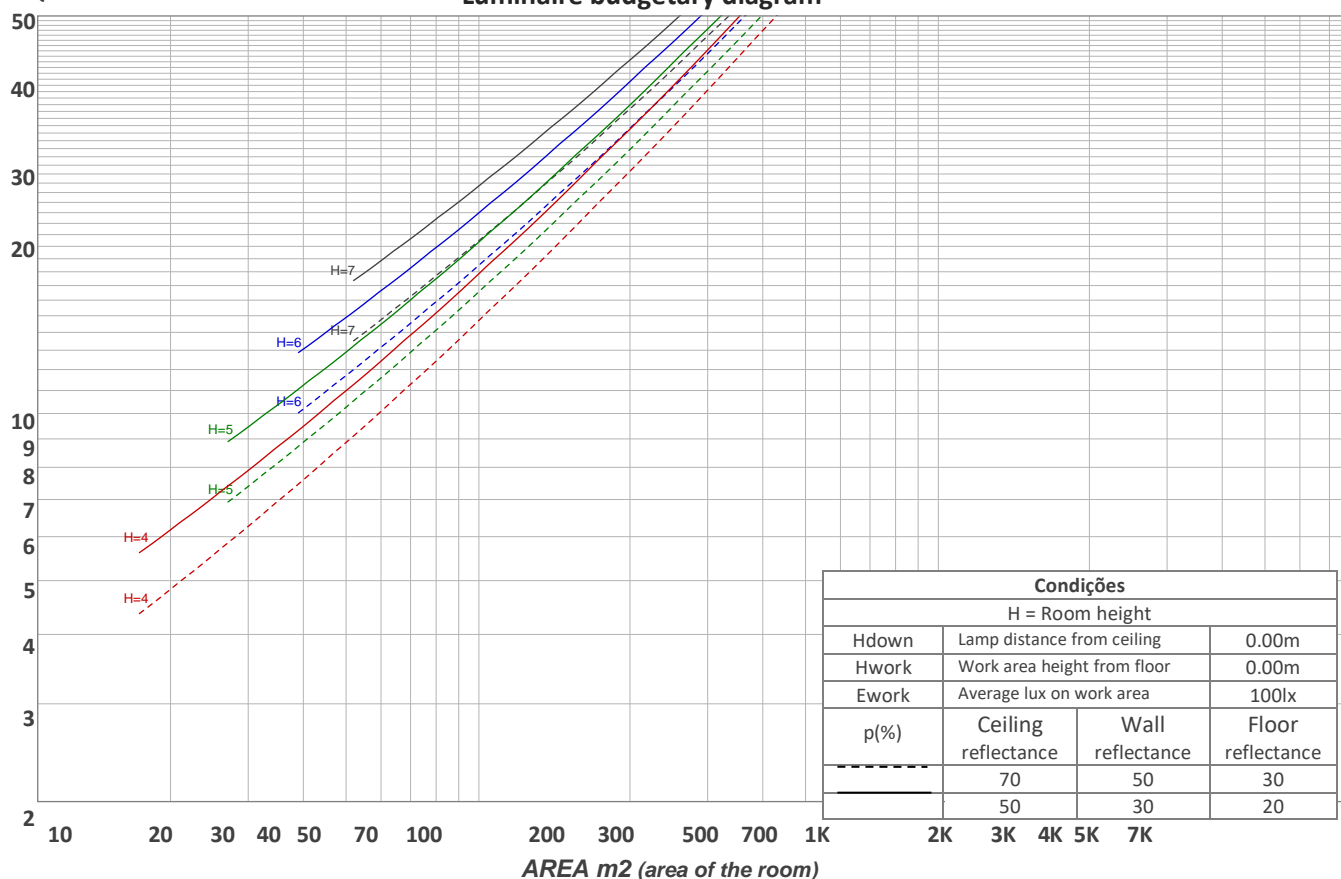
p Ceiling		70	70	50	50	30	70	70	50	50	30
p Walls		50	30	50	30	30	50	30	50	30	30
p Floor		20	20	20	20	20	20	20	20	20	20
Room size X    Y		Viewing direction at right angles to lamp axis					Viewing direction parallel to lamp axis				
2H	2H	20,5	21,7	20,7	22,0	22,2	20,3	21,5	20,6	21,8	22,1
	3H	21,9	23,2	22,3	23,5	23,7	21,8	23,0	22,2	23,3	23,5
	4H	22,5	23,7	23,0	24,0	24,3	22,4	23,6	22,8	23,9	24,2
	6H	23,0	24,1	23,4	24,4	24,8	22,9	24,0	23,2	24,3	24,7
	8H	23,1	24,1	23,5	24,5	24,9	23,1	24,1	23,4	24,4	24,8
	12H	23,2	24,2	23,6	24,5	25,0	23,1	24,1	23,5	24,5	24,9
4H	2H	21,0	22,2	21,5	22,5	22,8	20,9	22,1	21,3	22,4	22,7
	3H	22,8	23,8	23,2	24,2	24,6	22,7	23,7	23,1	24,0	24,5
	4H	23,5	24,4	23,9	24,8	25,4	23,4	24,3	23,8	24,7	25,3
	6H	24,0	24,9	24,5	25,3	25,6	23,9	24,8	24,5	25,2	25,6
	8H	24,2	25,0	24,7	25,3	25,7	24,1	24,9	24,7	25,3	25,7
	12H	24,3	24,9	24,8	25,4	25,8	24,3	24,9	24,8	25,4	25,8
8H	4H	23,8	24,6	24,3	24,9	25,3	23,7	24,5	24,2	24,8	25,2
	6H	24,4	25,0	25,0	25,5	26,1	24,4	25,0	24,9	25,5	26,0
	8H	24,7	25,2	25,2	25,8	26,4	24,7	25,2	25,2	25,7	26,4
	12H	24,8	25,3	25,4	25,8	26,4	24,9	25,3	25,5	25,8	26,5
12H	4H	23,8	24,4	24,3	24,9	25,4	23,7	24,3	24,2	24,8	25,3
	6H	24,5	25,0	25,0	25,6	26,2	24,5	25,0	25,0	25,5	26,2
	8H	24,8	25,2	25,4	25,7	26,4	24,8	25,2	25,4	25,7	26,4
Variation of the observer position for the luminaire distance S											
S = 1.0H		0,1 / -0,1					0,1 / -0,1				
S = 1.5H		0,1 / -0,2					0,1 / -0,3				
S = 2.0H		0,4 / -0,5					0,4 / -0,5				
Standard table		n/a					n/a				
Correction summand		n/a					n/a				
Corrected glare indices referring to 992 lm total luminous flux											

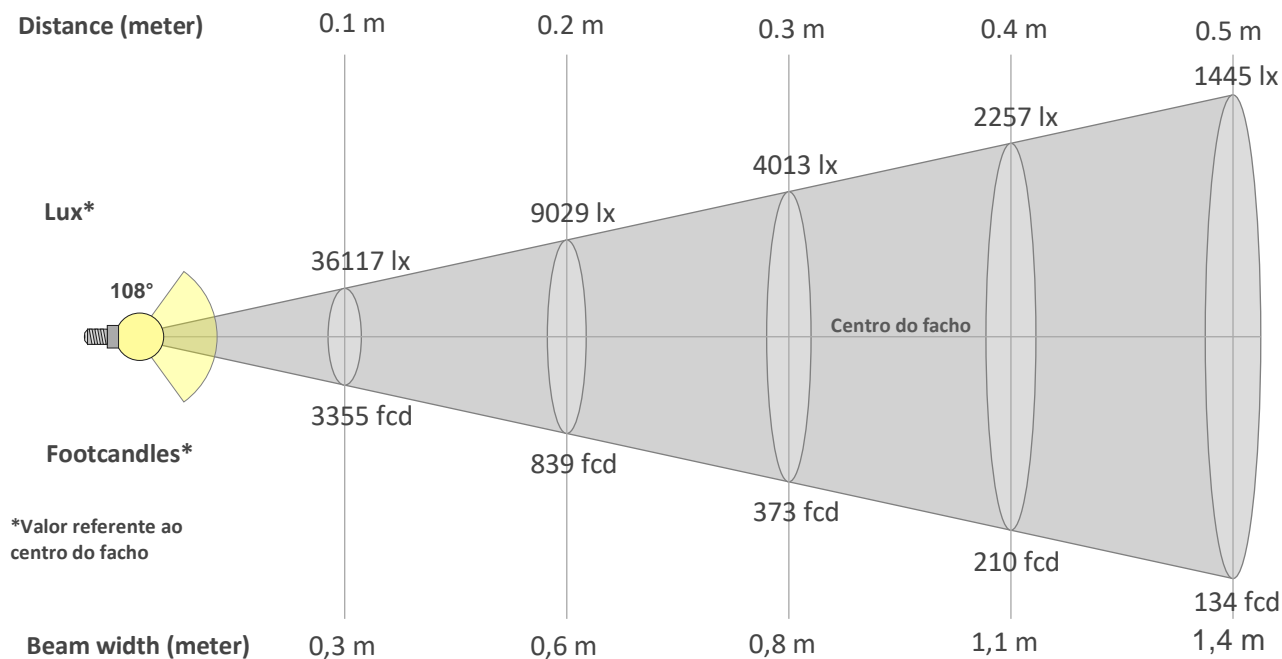
**Coeficiente de utilização**

Ceiling reflectance	80				70				50			30			10			0
Wall reflectance	70	50	30	10	70	50	30	10	50	30	10	50	30	10	50	30	10	0
Floor reflectance	20	20	20	20	20	20	20	20	20	20	20	20	20	20	20	20	20	0
RCR	(RCR: Room Cavity Ratio) Room Values are expressed as percentage of Lumens delivered to the task surface																	
0	119	119	119	119	116	116	116	116	111	111	111	106	106	106	101	101	101	99
1	109	104	100	96	106	101	98	94	97	94	91	93	90	88	89	87	85	83
2	99	91	84	78	96	89	82	77	85	80	75	81	77	73	78	75	71	69
3	90	80	71	65	87	78	70	64	75	68	63	72	66	62	69	65	61	58
4	82	70	62	55	80	69	61	55	66	59	54	64	58	53	62	56	52	50
5	76	63	54	47	74	62	53	47	60	52	46	58	51	46	56	50	45	43
6	70	57	48	41	68	56	47	41	54	46	41	52	45	40	50	44	40	38
7	65	51	43	37	63	51	42	36	49	42	36	47	41	36	46	40	35	33
8	60	47	38	33	59	46	38	33	45	38	32	44	37	32	42	36	32	30
9	57	43	35	29	55	43	35	29	41	34	29	40	34	29	39	33	29	27
10	53	40	32	27	52	39	32	27	38	31	26	37	31	26	36	30	26	24

**Quantidade de luminárias**

**Luminaire budgetary diagram**





### Beam intensities from 1-20m

1m	2m	3m	4m	5m	6m	7m	8m	9m	10m	11m	12m	13m	14m	15m	16m	17m	18m	19m	20m
3,3ft	6,6ft	9,8ft	13,1ft	16,4ft	19,7ft	23ft	26,2ft	29,5ft	32,8ft	36,1ft	39,4ft	42,7ft	45,9ft	49,2ft	52,5ft	55,8ft	59,1ft	62,3ft	65,6ft
361lx	90lx	40lx	23lx	14lx	10lx	7lx	6lx	4lx	4lx	3lx	3lx	2lx	2lx	2lx	1lx	1lx	1lx	1lx	1lx
33,6fcd	8,4fcd	3,7fcd	2,1fcd	1,3fcd	0,9fcd	0,7fcd	0,5fcd	0,4fcd	0,3fcd	0,3fcd	0,2fcd	0,2fcd	0,2fcd	0,1fcd	0,1fcd	0,1fcd	0,1fcd	0,1fcd	0,1fcd

### Intensities in 0° c-plane

0°	5°	10°	15°	20°	25°	30°	35°	40°	45°	50°	55°	60°	65°	70°	75°	80°	85°	90°	95°
361	359	354	345	332	316	297	277	254	230	205	179	150	122	93	65	37	14	2	1
100%	99%	98%	95%	92%	87%	82%	77%	70%	64%	57%	49%	42%	34%	26%	18%	10%	4%	1%	0%

### Intensities in 90° c-plane

0°	5°	10°	15°	20°	25°	30°	35°	40°	45°	50°	55°	60°	65°	70°	75°	80°	85°	90°	95°
361	359	352	342	328	311	292	271	247	223	198	172	145	118	91	64	38	16	3	1
100%	99%	98%	95%	91%	86%	81%	75%	68%	62%	55%	48%	40%	33%	25%	18%	10%	4%	1%	0%

### Intensities in 180° c-plane

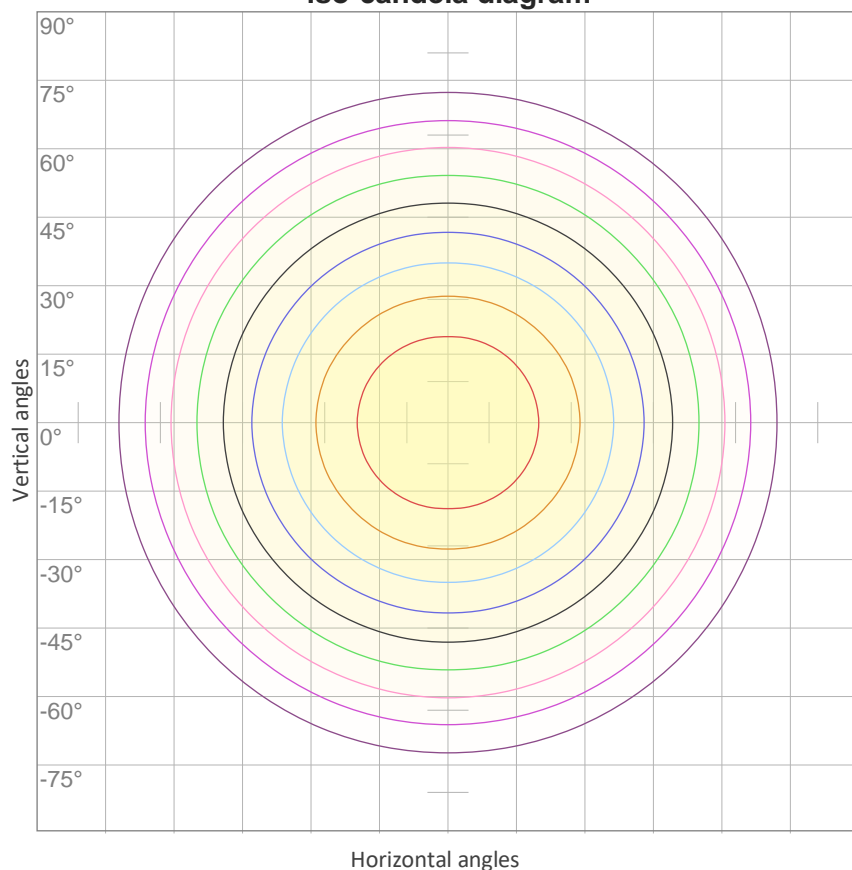
0°	5°	10°	15°	20°	25°	30°	35°	40°	45°	50°	55°	60°	65°	70°	75°	80°	85°	90°	95°
361	359	354	345	332	316	297	277	254	230	205	179	150	122	93	65	37	14	2	1
100%	99%	98%	95%	92%	87%	82%	77%	70%	64%	57%	49%	42%	34%	26%	18%	10%	4%	1%	0%

### Intensities in 270° c-plane

0°	5°	10°	15°	20°	25°	30°	35°	40°	45°	50°	55°	60°	65°	70°	75°	80°	85°	90°	95°
361	359	352	342	328	311	292	271	247	223	198	172	145	118	91	64	38	16	3	1
100%	99%	98%	95%	91%	86%	81%	75%	68%	62%	55%	48%	40%	33%	25%	18%	10%	4%	1%	0%

Beam angle 50%	Field angle 10%	Cutoff angle 2,5%	Intensity ratio in 120° cone	Intensity ratio in 90° cone
108°	160,7°	173,2°	78,5%	53,9%

**iso-candela diagram**



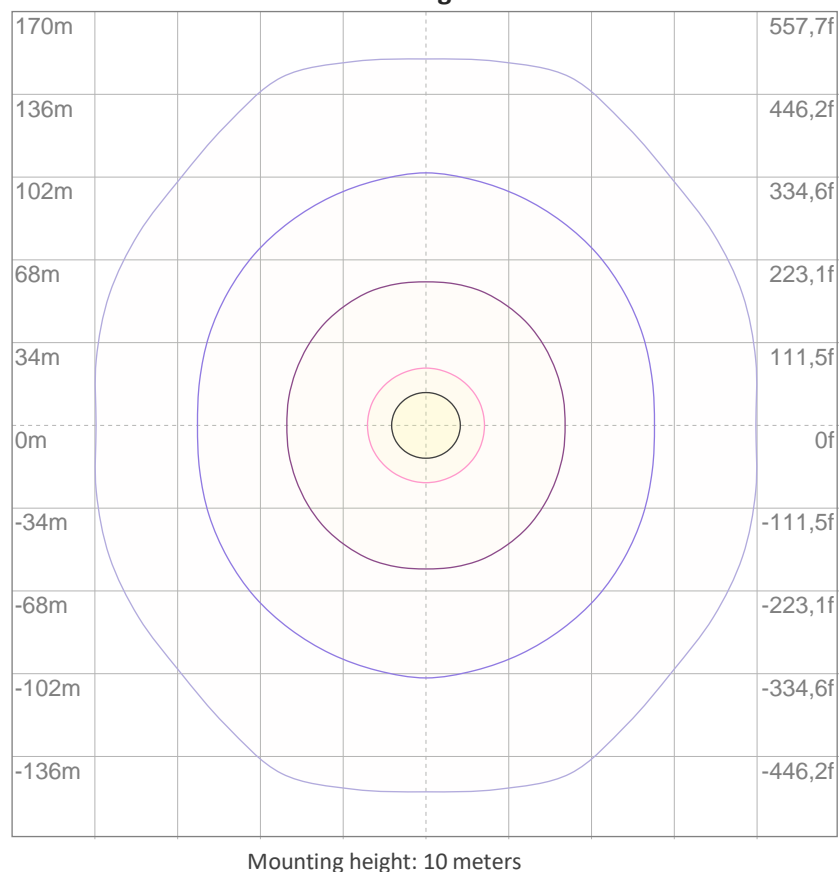
10%	36 cd
20%	72 cd
30%	108 cd
40%	144 cd
50%	181 cd
60%	217 cd
70%	253 cd
80%	289 cd
90%	325 cd

Conditions:

Number of c-planes: 16

Candela at center: 361 cd

**iso-lux diagram**



3%	0,108 lx
5%	0,181 lx
10%	0,361 lx
30%	1,08 lx
50%	1,81 lx

Conditions:

Number of c-planes: 16

Lux at center: 3,61 lx

*Lux distribution on a surface when lamp is mounted at 10 meters from the surface.*

**Potência**


**Vttagem: 12,0 V**

**Corrente: 1,16 A**

**Frequência: 0 Hz**

**FP: 1,0**

**THD**



**THD corrente: n/a**

**THD tensão: n/a**