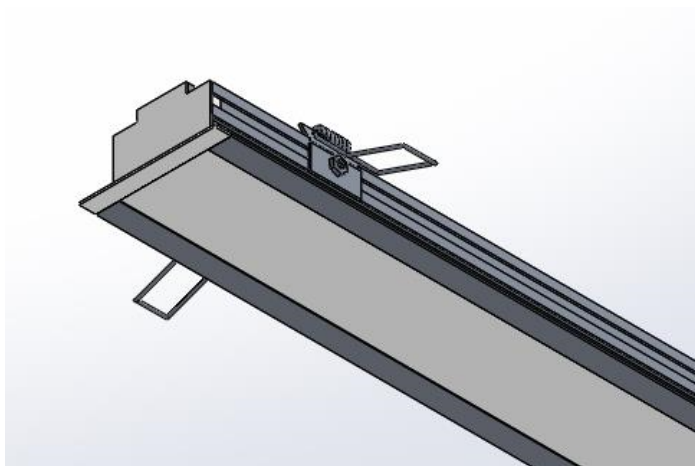


SLED9106 E46 BARRA M80B 22W 3000K



Fluxo luminoso – 1948 lm

Potência – 21,6 W

Intensidade pico – 764cd

CCT – 2866K

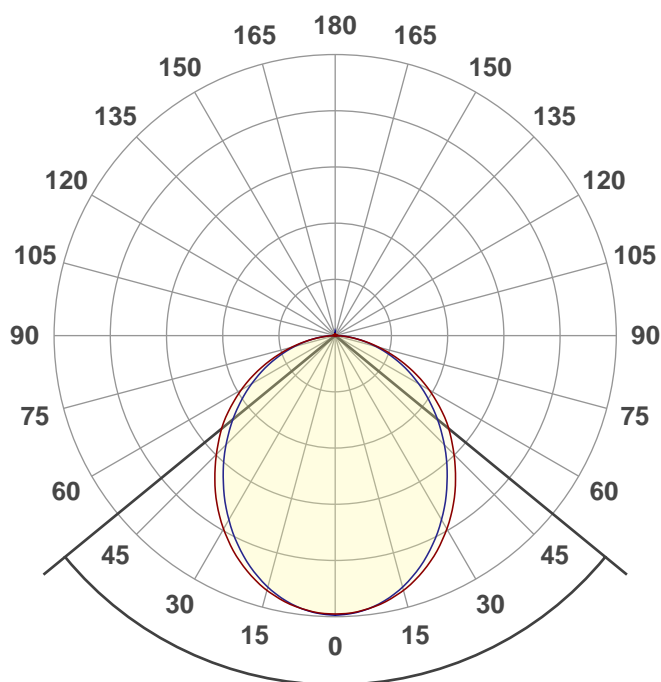


IRC – 83,5

Coordenada CIE 1931 – x- 0,445 y- 0,403

Data do ensaio

14/03/2023 15:08:57



Facho de abertura

101,3°

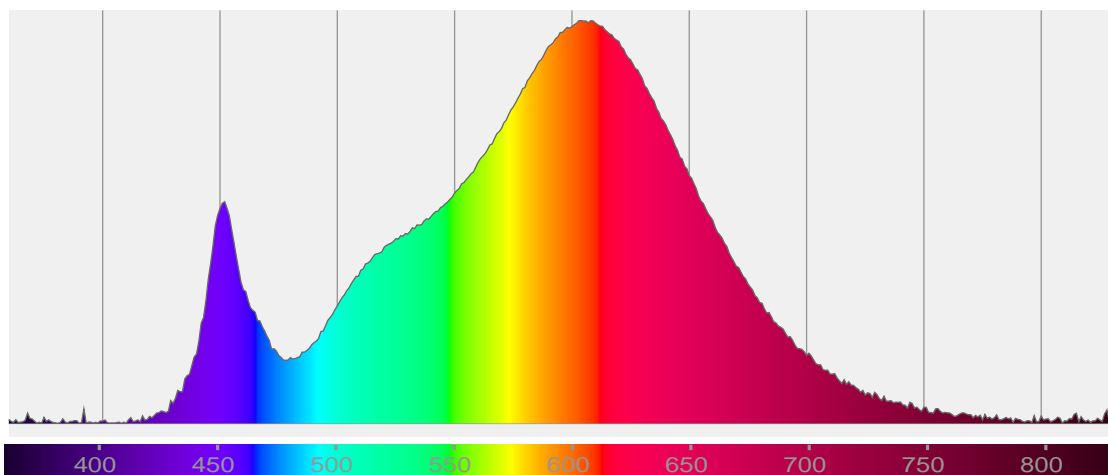
Rf 84,9

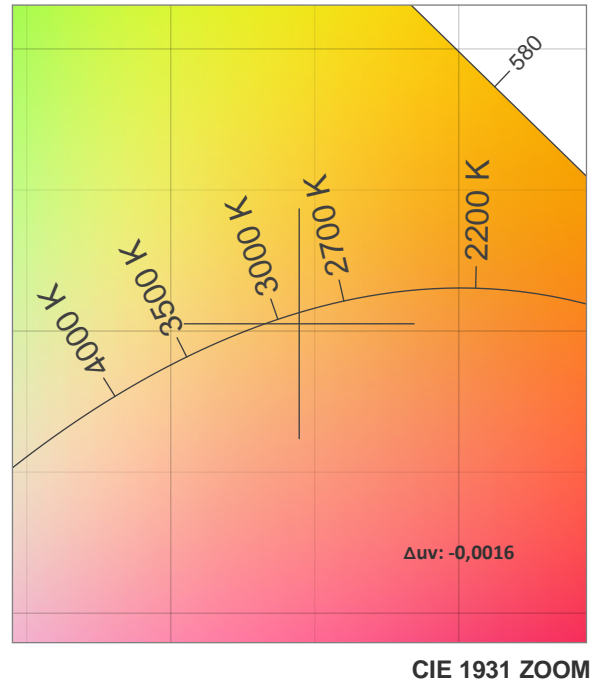
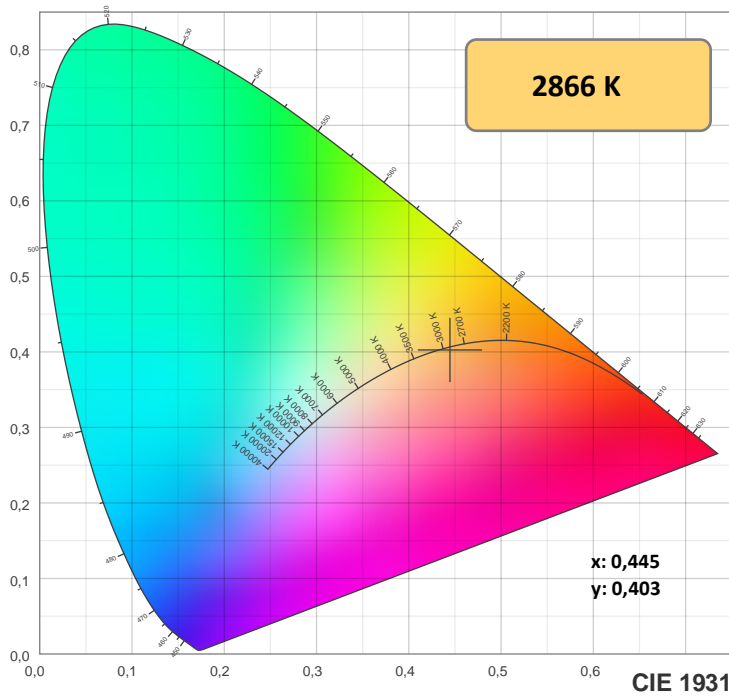
Fidelity index Rf

Rg 97,0

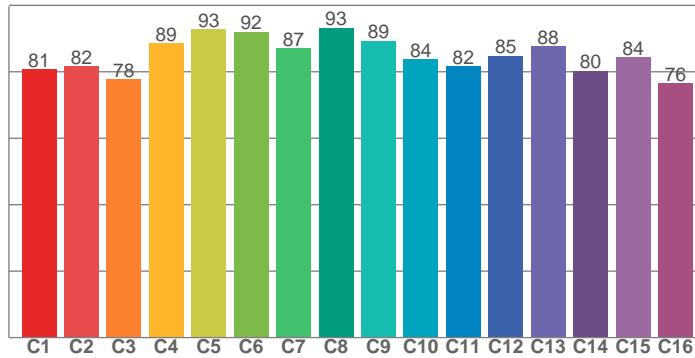
Gamut index Rg

Hue Bin	R _f	Shifts (%)	
		Chroma	Hue
1	81	-11%	0%
2	82	-8%	7%
3	78	-3%	12%
4	89	1%	6%
5	93	3%	4%
6	92	4%	-3%
7	87	-3%	-7%
8	93	-3%	-2%
9	89	-6%	3%
10	84	-4%	9%
11	82	0%	13%
12	85	7%	3%
13	88	6%	-7%
14	80	6%	-15%
15	84	-2%	-9%
16	76	-8%	-17%

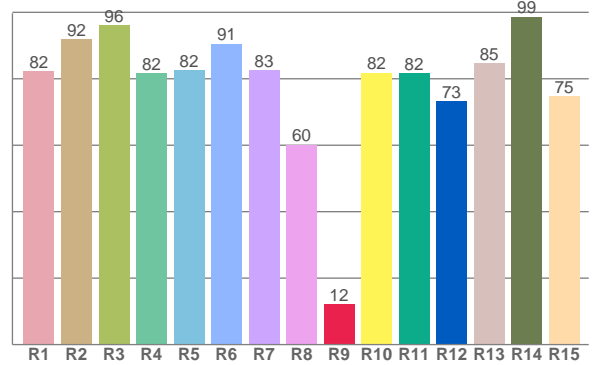




TM-30: 84,9



CRI: 83,5 (R1-R8)



CRIRA R1-R8 / CRIre R1-R15

R1	R2	R3	R4	R5	R6	R7	R8	R9	R10	R11	R12	R13	R14	R15
82,4	92,0	96,1	81,7	82,5	90,5	82,5	60,2	12,2	81,8	81,6	73,2	84,8	98,7	74,6

TM30 valores C. 16 valores extraídos dos 99.

C1	C2	C3	C4	C5	C6	C7	C8	C9	C10	C11	C12	C13	C14	C15	C16
80,8	81,6	77,8	88,6	92,7	92,0	87,0	93,2	89,3	83,8	81,6	84,8	87,6	80,3	84,3	76,5

Parametros de cor

Temperatura de cor	Índice de reprodução de cor	Reprodução de cor vermelho R9	Color fidelity	Color gamut	Color quality scale	Coordenada de cor cie 1931	Coordenada de cor cie 1931	Coordenada de cor	Coordenada de cor	Color deviation from black body
CCT	IRC	CRI R9	TM30 Rf	TM30 Rg	CQS	x	y	u	v	Δuv
2866 K	83,5	12,2	84,9	97,0	82,2	0,445	0,403	0,256	0,348	-0,0016

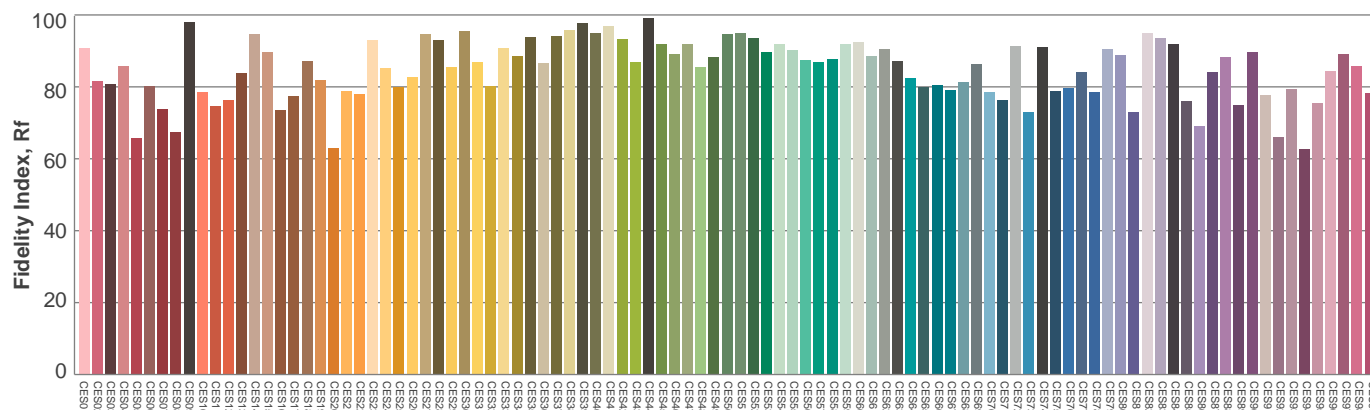
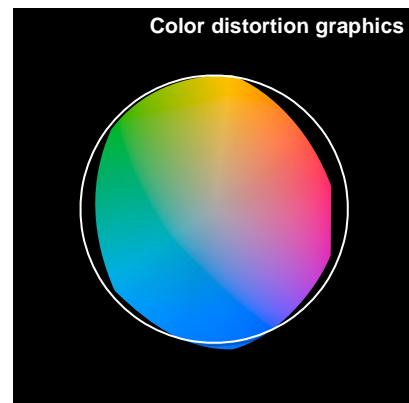
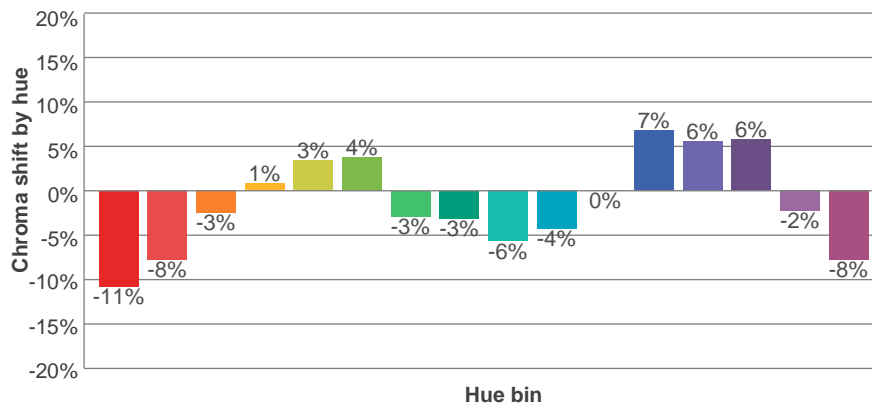
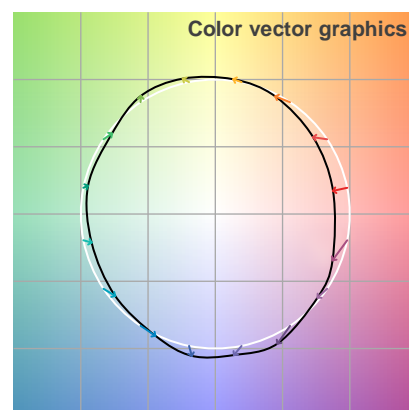
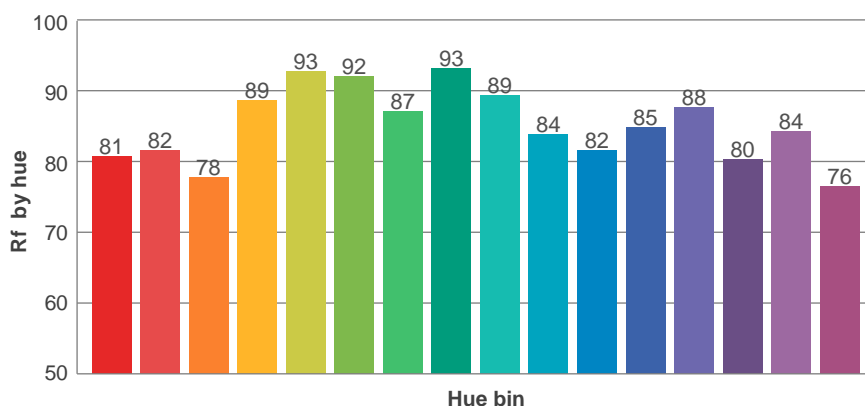
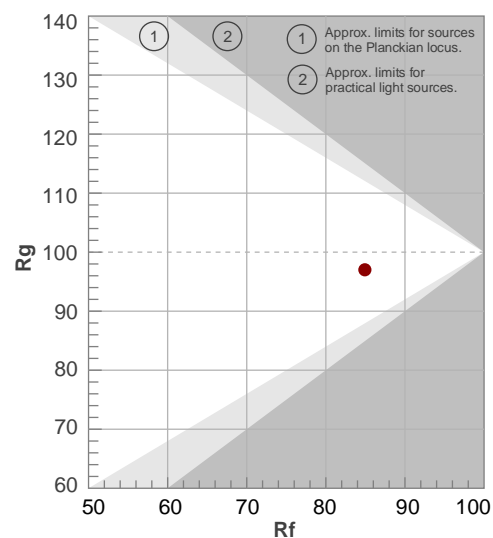
Rf 84,9

Fidelity index Rf

Rg 97,0

Gamut index Rg

Hue Bin	Ri	Shifts (%)	
		Chroma	Hue
1	81	-11%	0%
2	82	-8%	7%
3	78	-3%	12%
4	89	1%	6%
5	93	3%	4%
6	92	4%	-3%
7	87	-3%	-7%
8	93	-3%	-2%
9	89	-6%	3%
10	84	-4%	9%
11	82	0%	13%
12	85	7%	3%
13	88	6%	-7%
14	80	6%	-15%
15	84	-2%	-9%
16	76	-8%	-17%



Avaliação todas as amostras de cores

Glare Evaluation According to UGR

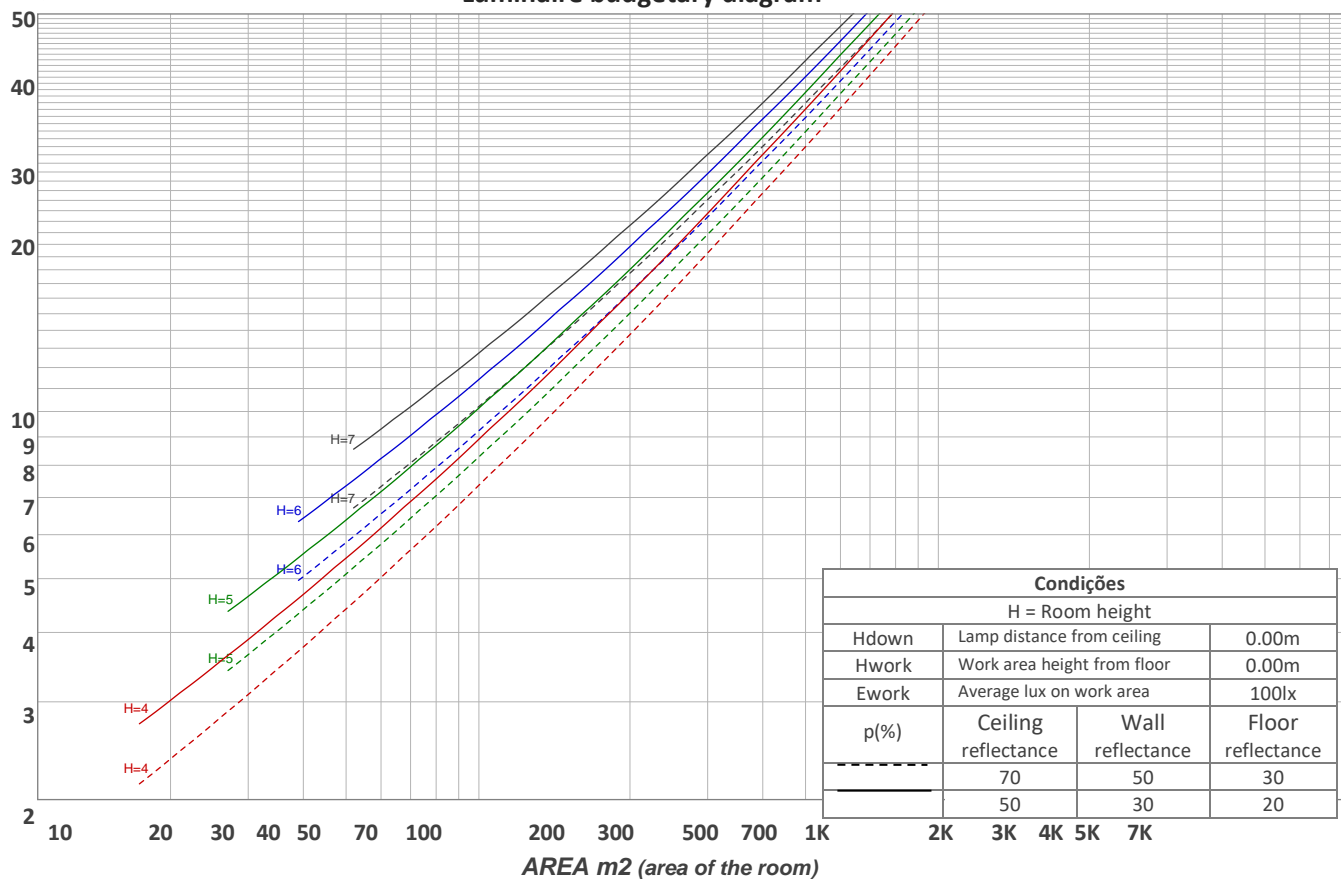
p Ceiling		70	70	50	50	30	70	70	50	50	30
p Walls		50	30	50	30	30	50	30	50	30	30
p Floor		20	20	20	20	20	20	20	20	20	20
Room size X Y		Viewing direction at right angles to lamp axis					Viewing direction parallel to lamp axis				
2H	2H	23,2	24,4	23,4	24,7	24,9	22,7	23,9	22,9	24,2	24,4
	3H	24,6	25,8	25,0	26,1	26,3	24,0	25,3	24,5	25,6	25,8
	4H	25,2	26,4	25,6	26,7	26,9	24,7	25,8	25,1	26,1	26,4
	6H	25,7	26,7	26,0	27,0	27,4	25,2	26,2	25,5	26,5	26,9
	8H	25,8	26,8	26,2	27,1	27,6	25,3	26,3	25,7	26,6	27,1
	12H	25,9	26,8	26,2	27,2	27,6	25,4	26,4	25,8	26,7	27,2
4H	2H	23,7	24,9	24,1	25,2	25,4	23,3	24,5	23,7	24,8	25,0
	3H	25,4	26,4	25,8	26,8	27,2	25,0	26,0	25,4	26,3	26,8
	4H	26,1	27,0	26,5	27,4	28,0	25,6	26,5	26,1	27,0	27,5
	6H	26,6	27,5	27,1	27,9	28,2	26,2	27,1	26,7	27,4	27,8
	8H	26,8	27,6	27,3	28,0	28,4	26,4	27,2	26,9	27,6	28,0
	12H	26,9	27,6	27,4	28,0	28,5	26,6	27,2	27,1	27,6	28,1
8H	4H	26,4	27,1	26,9	27,5	27,9	26,0	26,7	26,5	27,1	27,5
	6H	27,1	27,6	27,6	28,1	28,7	26,7	27,3	27,2	27,8	28,3
	8H	27,3	27,8	27,9	28,4	29,0	27,0	27,5	27,5	28,0	28,7
	12H	27,5	27,9	28,1	28,5	29,1	27,2	27,6	27,8	28,2	28,8
12H	4H	26,4	27,0	26,9	27,4	27,9	26,0	26,6	26,5	27,1	27,5
	6H	27,1	27,6	27,7	28,2	28,8	26,8	27,3	27,3	27,8	28,5
	8H	27,4	27,9	28,0	28,4	29,0	27,1	27,5	27,7	28,0	28,7
Variation of the observer position for the luminaire distance S											
S = 1.0H		0,1 / -0,1					0,1 / -0,1				
S = 1.5H		0,2 / -0,2					0,1 / -0,3				
S = 2.0H		0,5 / -0,5					0,4 / -0,5				
Standard table		n/a					n/a				
Correction summand		n/a					n/a				
Corrected glare indices referring to 1948 lm total luminous flux											

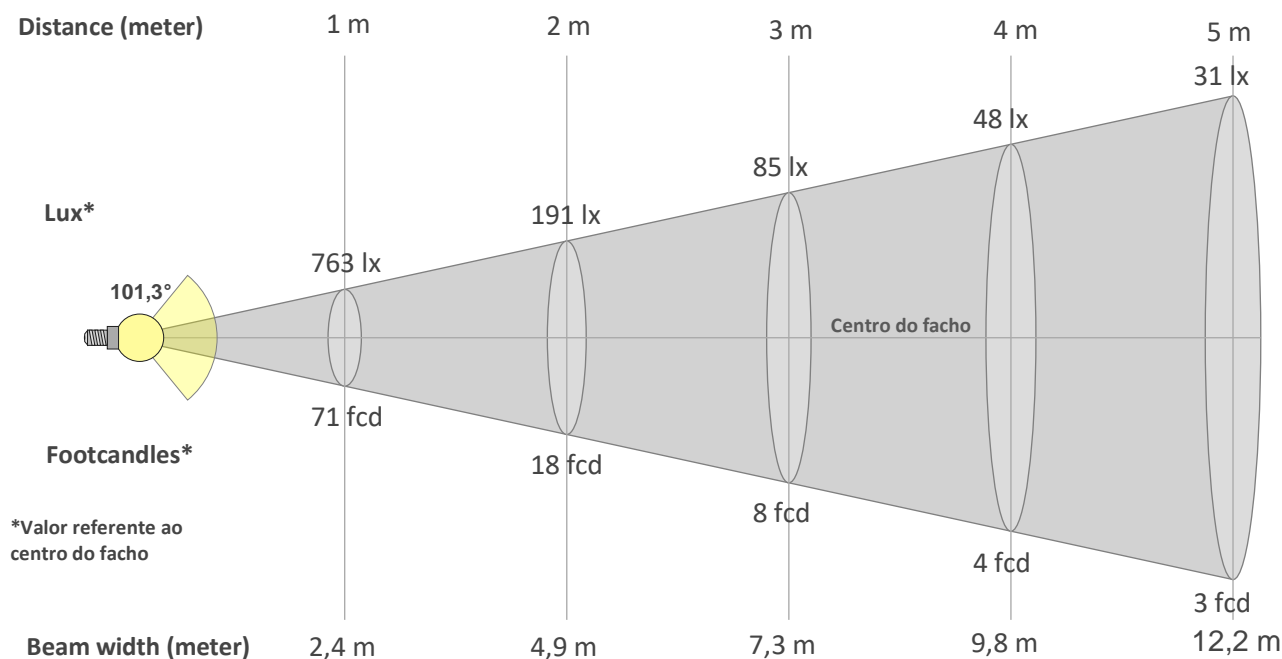
Coeficiente de utilização

Ceiling reflectance	80				70				50			30			10			0
Wall reflectance	70	50	30	10	70	50	30	10	50	30	10	50	30	10	50	30	10	0
Floor reflectance	20	20	20	20	20	20	20	20	20	20	20	20	20	20	20	20	20	0
RCR	(RCR: Room Cavity Ratio) Room Values are expressed as percentage of Lumens delivered to the task surface																	
0	119	119	119	119	116	116	116	116	111	111	111	106	106	106	101	101	101	99
1	109	104	100	96	106	102	98	94	97	94	91	93	91	88	90	88	86	84
2	99	91	84	79	96	89	83	78	85	80	76	82	78	74	79	75	72	70
3	91	80	72	66	88	79	71	65	75	69	64	73	67	63	70	65	61	59
4	83	71	63	56	81	70	62	56	67	60	55	65	59	54	63	57	53	51
5	76	64	55	48	74	63	54	48	60	53	47	58	52	47	57	51	46	44
6	71	58	49	42	69	57	48	42	55	47	42	53	46	41	51	45	41	39
7	66	52	44	38	64	51	43	37	50	42	37	48	42	37	47	41	36	34
8	61	48	39	34	60	47	39	33	46	38	33	44	38	33	43	37	33	31
9	57	44	36	30	56	43	36	30	42	35	30	41	35	30	40	34	30	28
10	54	41	33	28	52	40	33	28	39	32	27	38	32	27	37	31	27	25

Quantidade de luminárias

Luminaire budgetary diagram





Beam intensities from 1-20m

1m	2m	3m	4m	5m	6m	7m	8m	9m	10m	11m	12m	13m	14m	15m	16m	17m	18m	19m	20m
3,3ft	6,6ft	9,8ft	13,1ft	16,4ft	19,7ft	23ft	26,2ft	29,5ft	32,8ft	36,1ft	39,4ft	42,7ft	45,9ft	49,2ft	52,5ft	55,8ft	59,1ft	62,3ft	65,6ft
763lx	191lx	85lx	48lx	31lx	21lx	16lx	12lx	9lx	8lx	6lx	5lx	5lx	4lx	3lx	3lx	3lx	2lx	2lx	2lx
70,9fcd	17,7fcd	7,9fcd	4,4fcd	2,8fcd	2fcd	1,4fcd	1,1fcd	0,9fcd	0,7fcd	0,6fcd	0,5fcd	0,4fcd	0,4fcd	0,3fcd	0,3fcd	0,2fcd	0,2fcd	0,2fcd	0,2fcd

Intensities in 0° c-plane

0°	5°	10°	15°	20°	25°	30°	35°	40°	45°	50°	55°	60°	65°	70°	75°	80°	85°	90°	95°
763	757	743	721	691	654	611	564	512	460	408	354	297	239	180	124	73	30	5	2
100%	99%	97%	95%	91%	86%	80%	74%	67%	60%	54%	46%	39%	31%	24%	16%	10%	4%	1%	0%

Intensities in 90° c-plane

0°	5°	10°	15°	20°	25°	30°	35°	40°	45°	50°	55°	60°	65°	70°	75°	80°	85°	90°	95°
763	758	740	712	675	631	582	530	476	422	369	316	264	213	163	115	71	31	4	1
100%	99%	97%	93%	89%	83%	76%	69%	62%	55%	48%	41%	35%	28%	21%	15%	9%	4%	1%	0%

Intensities in 180° c-plane

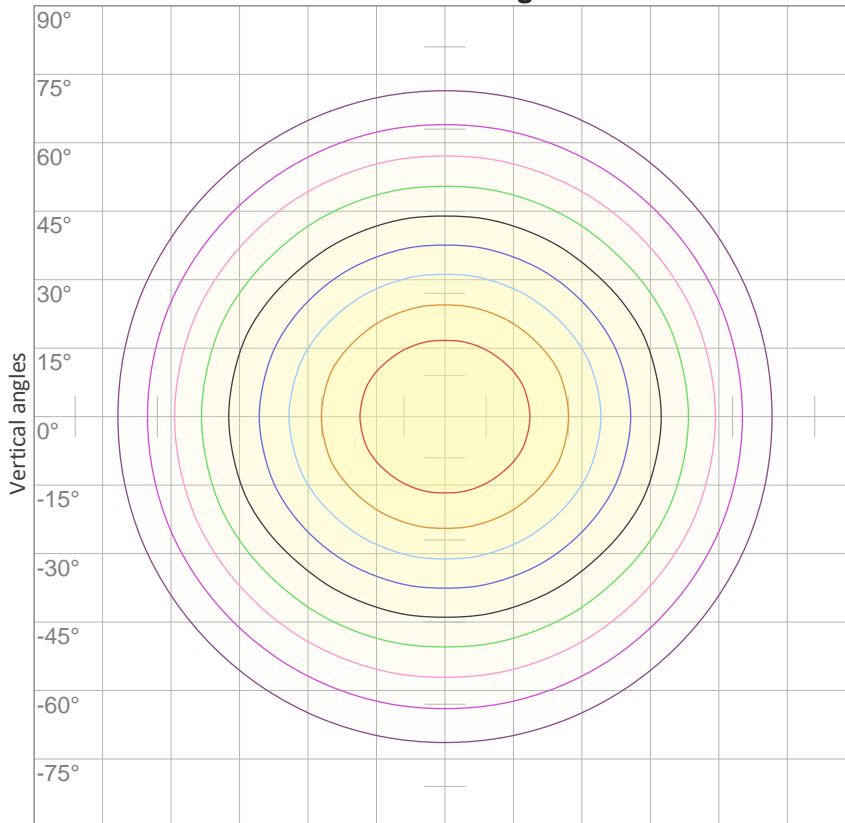
0°	5°	10°	15°	20°	25°	30°	35°	40°	45°	50°	55°	60°	65°	70°	75°	80°	85°	90°	95°
763	757	743	721	691	654	611	564	512	460	408	354	297	239	180	124	73	30	5	2
100%	99%	97%	95%	91%	86%	80%	74%	67%	60%	54%	46%	39%	31%	24%	16%	10%	4%	1%	0%

Intensities in 270° c-plane

0°	5°	10°	15°	20°	25°	30°	35°	40°	45°	50°	55°	60°	65°	70°	75°	80°	85°	90°	95°
763	758	740	712	675	631	582	530	476	422	369	316	264	213	163	115	71	31	4	1
100%	99%	97%	93%	89%	83%	76%	69%	62%	55%	48%	41%	35%	28%	21%	15%	9%	4%	1%	0%

Beam angle 50%	Field angle 10%	Cutoff angle 2,5%	Intensity ratio in 120° cone	Intensity ratio in 90° cone
101,3°	159,1°	173,4°	79,6%	55,6%

iso-candela diagram



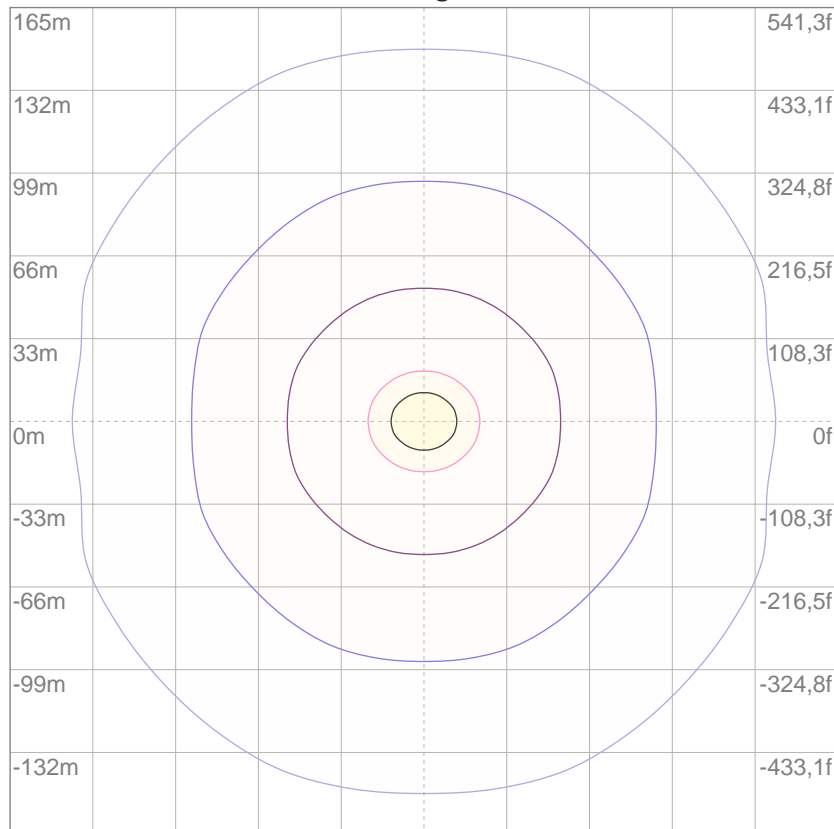
10%	76 cd
20%	153 cd
30%	229 cd
40%	305 cd
50%	381 cd
60%	458 cd
70%	534 cd
80%	610 cd
90%	686 cd

Conditions:

Number of c-planes: 16

Candela at center: 763 cd

iso-lux diagram



3%	0,229 lx
5%	0,381 lx
10%	0,763 lx
30%	2,29 lx
50%	3,81 lx

Conditions:

Number of c-planes: 16

Lux at center: 7,63 lx

Lux distribution on a surface when lamp is mounted at 10 meters from the surface.

Potência

Vttagem: 241 V
Corrente: 0,090 A
Frequência: 0 Hz
FP: 0,57

THD



THD corrente: n/a
THD tensão: n/a