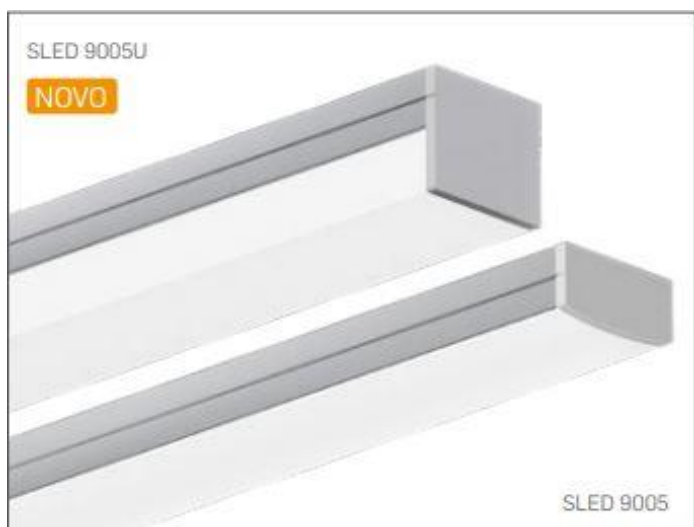


9005 SLED9005U BRANCA FITA 19WM 5500K 80-1m



Luminária linear de sobrepor em forro de gesso ou Dry-wall com iluminação difusa. Corpo em alumínio extrudado com acabamento na cor branca. Difusor em acrílico extrudado leitoso. Indicado para residência, recepção, escritório etc.

Fluxo luminoso – 1725 lm/m

Potência – 19,0 W/m

Intensidade pico – 393cd

CCT – 5700K

IRC – 85,7

Coordenada CIE 1931 – x- 0,328 y- 0,341

A x L - 8x17

Peso - 0,12kg/m

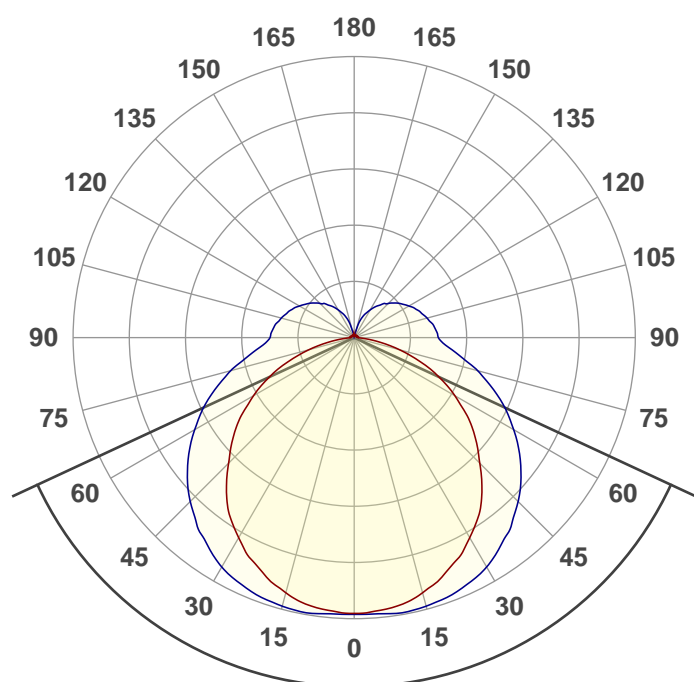
IP - 20 - Uso Interno

IK - 00 – Não aplicável

Alimentação - 12vdc

Data do ensaio

09/09/2022 14:15:14



Facho de abertura

130,2°

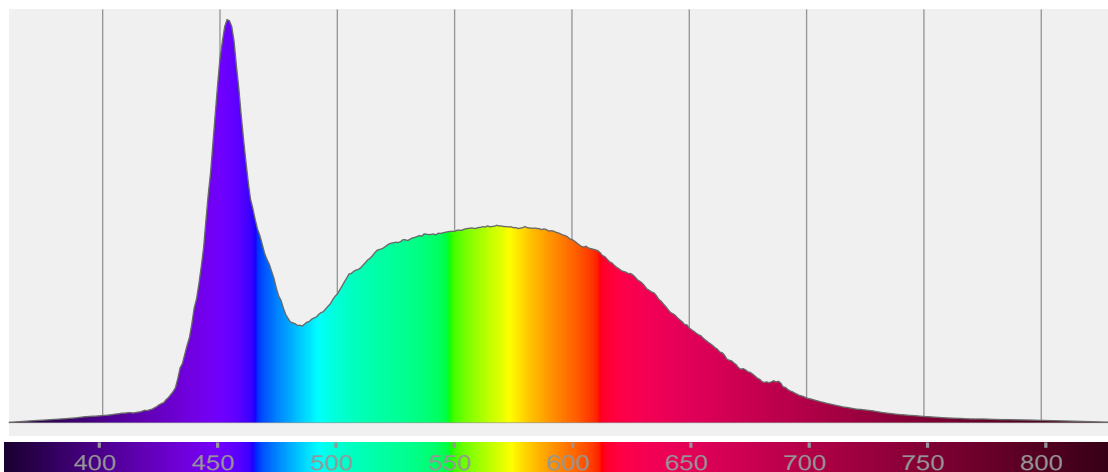
Rf 84,5

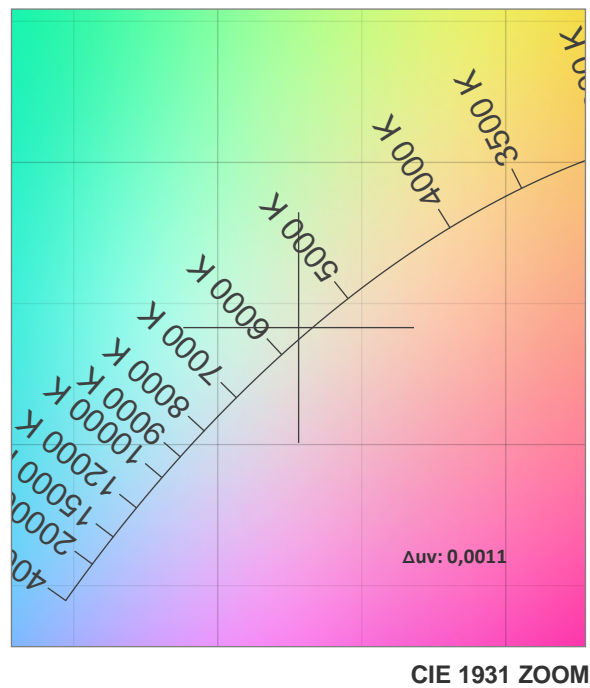
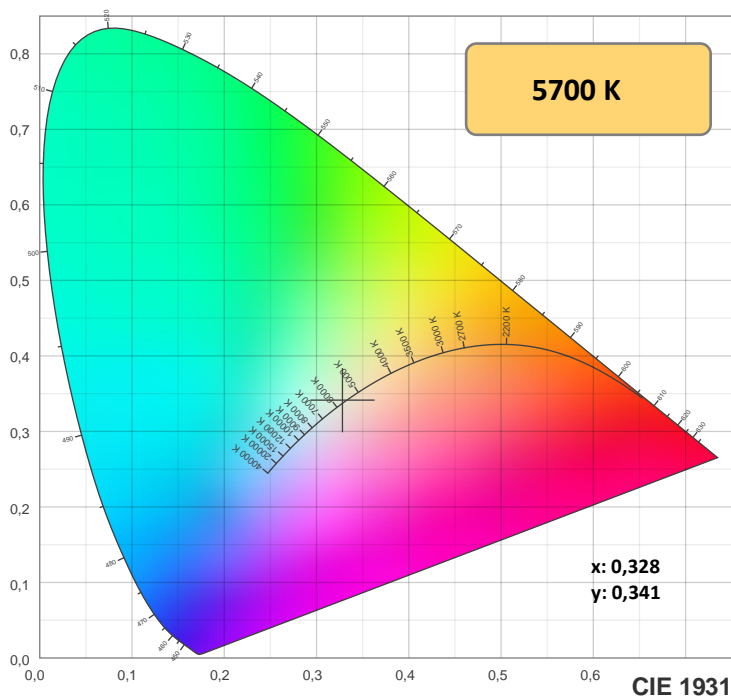
Fidelity index Rf

Rg 95,1

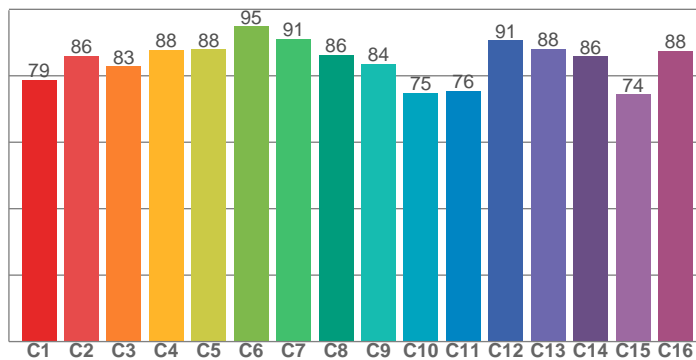
Gamut index Rg

Hue Bin	R _f	Shifts (%)	
		Chroma	Hue
1	79	-11%	0%
2	86	-6%	5%
3	83	-4%	8%
4	88	-1%	5%
5	88	-2%	3%
6	95	0%	-1%
7	91	-5%	-1%
8	86	-8%	3%
9	84	-8%	12%
10	75	-4%	15%
11	76	3%	15%
12	91	5%	3%
13	88	7%	-5%
14	86	3%	-8%
15	74	5%	-22%
16	88	-6%	-4%

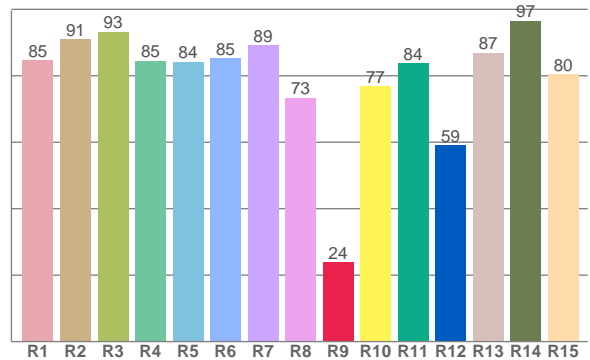




TM-30: 84,5



CRI: 85,7 (R1-R8)



CRIRA R1-R8 / CRIR R1-R15

R1	R2	R3	R4	R5	R6	R7	R8	R9	R10	R11	R12	R13	R14	R15
84,7	90,9	93,2	84,6	84,2	85,4	89,1	73,4	23,8	76,9	83,8	59,1	86,9	96,6	80,4

TM30 valores C. 16 valores extraídos dos 99.

C1	C2	C3	C4	C5	C6	C7	C8	C9	C10	C11	C12	C13	C14	C15	C16
78,8	86,0	82,8	87,9	88,0	94,9	91,1	86,2	83,7	74,9	75,5	90,7	88,1	85,9	74,5	87,5

Parametros de cor

Temperatura de cor	Índice de reprodução de cor	Reprodução de cor vermelho R9	Color fidelity	Color gamut	Color quality scale	Coordenada de cor cie 1931	Coordenada de cor cie 1931	Coordenada de cor	Coordenada de cor	Color deviation from black body
CCT	IRC	CRI R9	TM30 Rf	TM30 Rg	CQS	x	y	u	v	Δuv
5700 K	85,7	23,8	84,5	95,1	82,6	0,328	0,341	0,204	0,318	0,0011

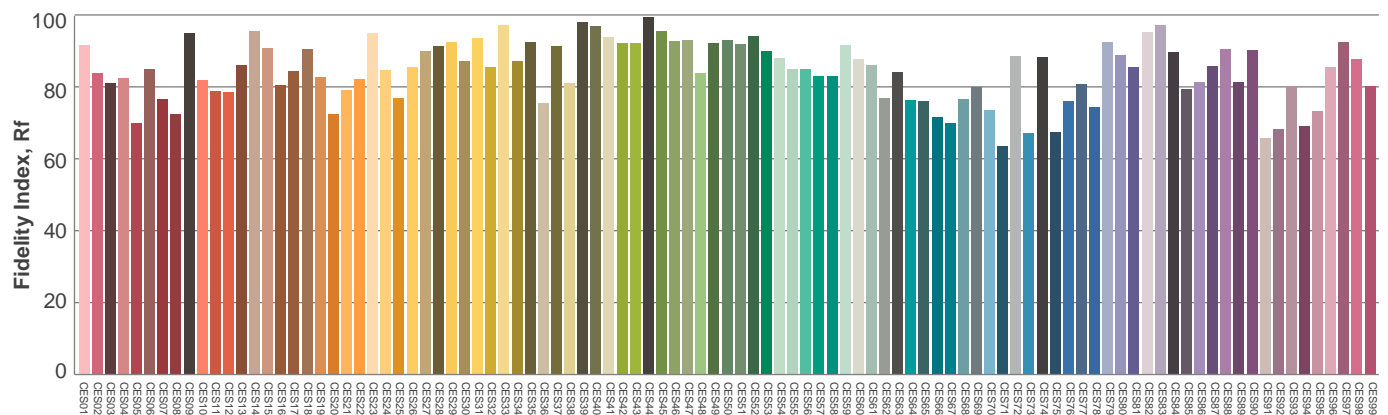
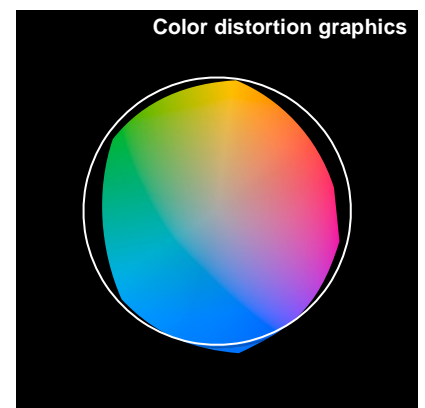
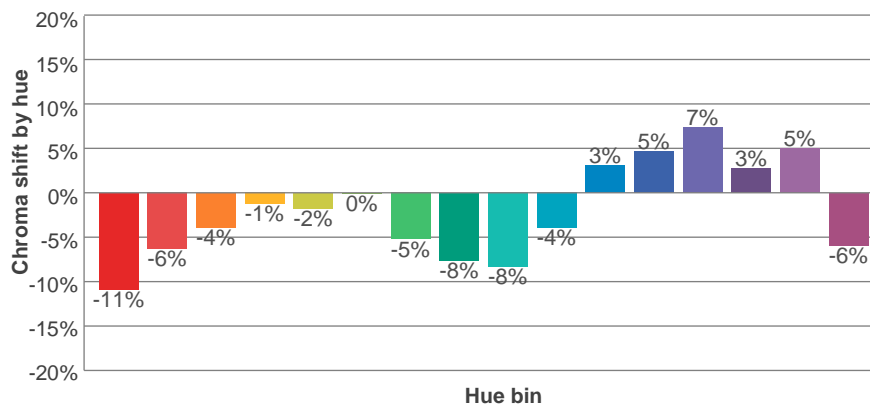
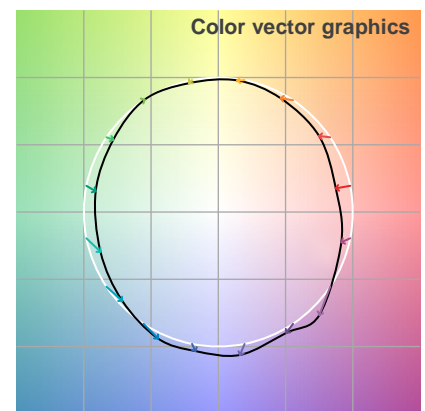
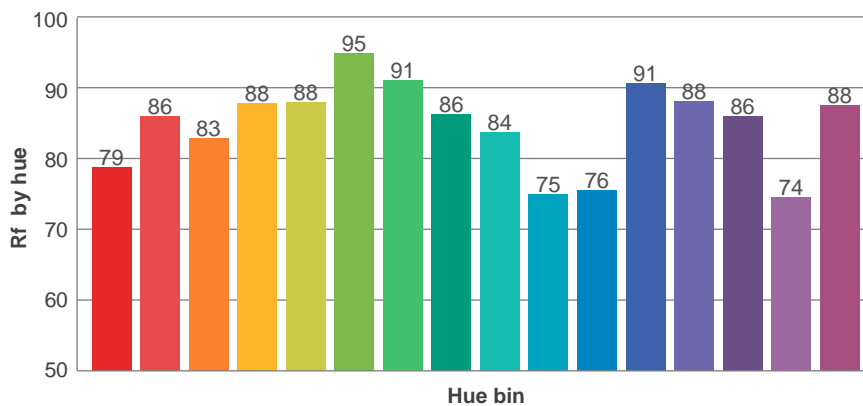
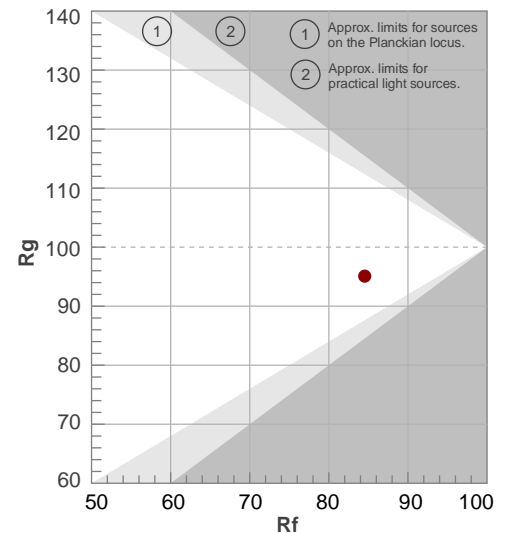
Rf 84,5

Fidelity index Rf

Rg 95,1

Gamut index Rg

Hue Bin	R _f	Shifts (%)	
		Chroma	Hue
1	79	-11%	0%
2	86	-6%	5%
3	83	-4%	8%
4	88	-1%	5%
5	88	-2%	3%
6	95	0%	-1%
7	91	-5%	-1%
8	86	-8%	3%
9	84	-8%	12%
10	75	-4%	15%
11	76	3%	15%
12	91	5%	3%
13	88	7%	-5%
14	86	3%	-8%
15	74	5%	-22%
16	88	-6%	-4%



Glare Evaluation According to UGR

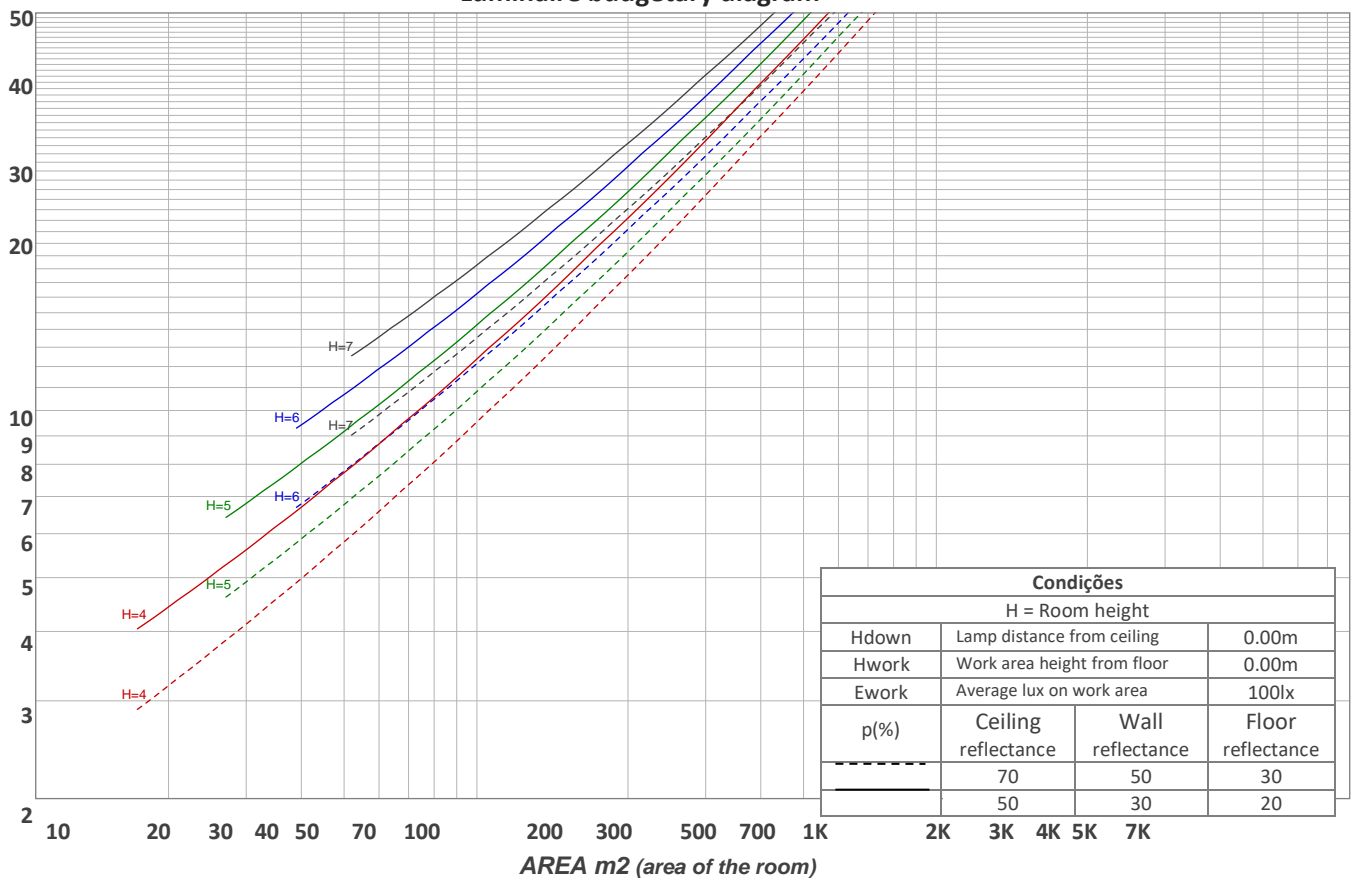
p Ceiling		70	70	50	50	30	70	70	50	50	30
p Walls		50	30	50	30	30	50	30	50	30	30
p Floor		20	20	20	20	20	20	20	20	20	20
Room size X Y		Viewing direction at right angles to lamp axis					Viewing direction parallel to lamp axis				
2H	2H	21,7	22,8	22,2	23,4	24,0	23,7	24,8	24,2	25,4	26,0
	3H	23,1	24,2	23,7	24,8	25,3	25,9	27,1	26,6	27,6	28,2
	4H	23,6	24,7	24,2	25,2	25,8	27,2	28,2	27,8	28,8	29,4
	6H	24,0	24,9	24,5	25,5	26,2	28,5	29,4	29,1	30,0	30,7
	8H	24,0	25,0	24,6	25,6	26,3	29,2	30,1	29,8	30,7	31,4
	12H	24,0	25,0	24,7	25,6	26,3	30,0	30,9	30,6	31,5	32,2
4H	2H	22,8	23,8	23,4	24,4	25,0	24,2	25,3	24,8	25,8	26,5
	3H	24,5	25,5	25,1	26,0	26,7	26,8	27,8	27,4	28,3	29,1
	4H	25,1	26,1	25,8	26,6	27,4	28,1	29,2	28,8	29,7	30,5
	6H	25,6	26,4	26,3	27,0	27,7	29,6	30,4	30,3	31,0	31,7
	8H	25,7	26,4	26,4	27,1	27,8	30,4	31,1	31,1	31,8	32,5
	12H	25,8	26,4	26,5	27,1	27,8	31,4	31,9	32,1	32,6	33,4
8H	4H	25,9	26,6	26,6	27,3	28,0	28,4	29,1	29,1	29,8	30,5
	6H	26,7	27,2	27,4	28,0	28,8	30,2	30,7	30,9	31,5	32,3
	8H	27,0	27,4	27,7	28,2	29,1	31,2	31,7	31,9	32,4	33,3
	12H	27,2	27,6	28,0	28,3	29,2	32,3	32,7	33,1	33,5	34,4
12H	4H	26,1	26,7	26,8	27,4	28,2	28,4	29,0	29,1	29,7	30,5
	6H	27,1	27,6	27,8	28,3	29,2	30,3	30,7	31,0	31,5	32,4
	8H	27,5	27,9	28,3	28,7	29,5	31,3	31,8	32,1	32,5	33,4
Variation of the observer position for the luminaire distance S											
S = 1.0H		0,1 / -0,1					0,1 / -0,1				
S = 1.5H		0,2 / -0,2					0,1 / -0,1				
S = 2.0H		0,3 / -0,5					0,2 / -0,2				
Standard table		n/a					n/a				
Correction summand		n/a					n/a				
Corrected glare indices referring to 1725 lm total luminous flux											

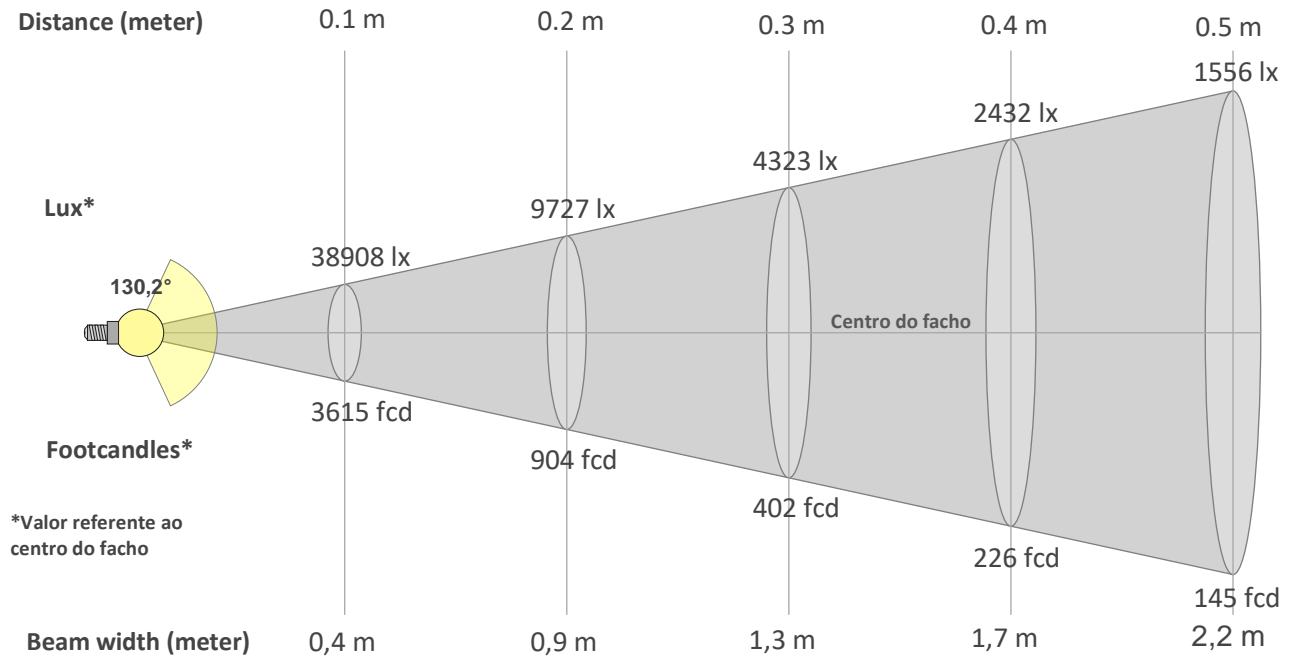
Coeficiente de utilização

Ceiling reflectance	80				70				50			30			10			0
Wall reflectance	70	50	30	10	70	50	30	10	50	30	10	50	30	10	50	30	10	0
Floor reflectance	20	20	20	20	20	20	20	20	20	20	20	20	20	20	20	20	20	0
RCR	(RCR: Room Cavity Ratio) Room Values are expressed as percentage of Lumens delivered to the task surface																	
0	115	115	115	115	110	110	110	110	101	101	101	93	93	93	85	85	85	82
1	102	97	92	87	98	93	88	84	85	82	78	78	75	73	72	69	67	64
2	92	83	76	70	88	80	73	67	73	68	63	67	63	59	62	58	55	51
3	84	72	64	57	80	69	62	55	64	57	52	59	53	49	54	49	45	42
4	76	64	55	47	72	61	53	46	56	49	44	52	46	41	47	43	38	36
5	70	57	47	40	66	54	46	39	50	43	37	46	40	35	42	37	33	30
6	64	51	41	35	61	49	40	34	45	38	32	42	35	31	38	33	29	26
7	59	46	37	31	57	44	36	30	41	34	28	38	32	27	35	30	25	23
8	55	42	33	27	53	40	32	26	37	30	25	35	28	24	32	27	23	20
9	51	38	30	24	49	37	29	24	34	27	22	32	26	21	29	24	20	18
10	48	35	27	22	46	34	26	21	31	25	20	29	23	19	27	22	18	16

Quantidade de luminárias

Luminaire budgetary diagram





Beam intensities from 1-20m

1m	2m	3m	4m	5m	6m	7m	8m	9m	10m	11m	12m	13m	14m	15m	16m	17m	18m	19m	20m
3,3ft	6,6ft	9,8ft	13,1ft	16,4ft	19,7ft	23ft	26,2ft	29,5ft	32,8ft	36,1ft	39,4ft	42,7ft	45,9ft	49,2ft	52,5ft	55,8ft	59,1ft	62,3ft	65,6ft
389lx	97lx	43lx	24lx	16lx	11lx	8lx	6lx	5lx	4lx	3lx	3lx	2lx	2lx	2lx	2lx	1lx	1lx	1lx	1lx
36,1fcd	9fcd	4fcd	2,3fcd	1,4fcd	1fcd	0,7fcd	0,6fcd	0,4fcd	0,4fcd	0,3fcd	0,3fcd	0,2fcd	0,2fcd	0,2fcd	0,1fcd	0,1fcd	0,1fcd	0,1fcd	0,1fcd

Intensities in 0° c-plane

0°	9°	18°	27°	36°	45°	54°	63°	72°	81°	90°	99°	108°	117°	126°	135°	144°	153°	162°	171°
389	382	364	337	301	250	201	145	85	31	5	4	5	5	4	4	3	3	3	3
100%	98%	94%	87%	77%	64%	52%	37%	22%	8%	1%	1%	1%	1%	1%	1%	1%	1%	1%	1%

Intensities in 90° c-plane

0°	9°	18°	27°	36°	45°	54°	63°	72°	81°	90°	99°	108°	117°	126°	135°	144°	153°	162°	171°
389	392	389	378	355	326	288	244	195	147	118	113	103	93	81	68	55	40	22	5
100%	101%	100%	97%	91%	84%	74%	63%	50%	38%	30%	29%	26%	24%	21%	17%	14%	10%	6%	1%

Intensities in 180° c-plane

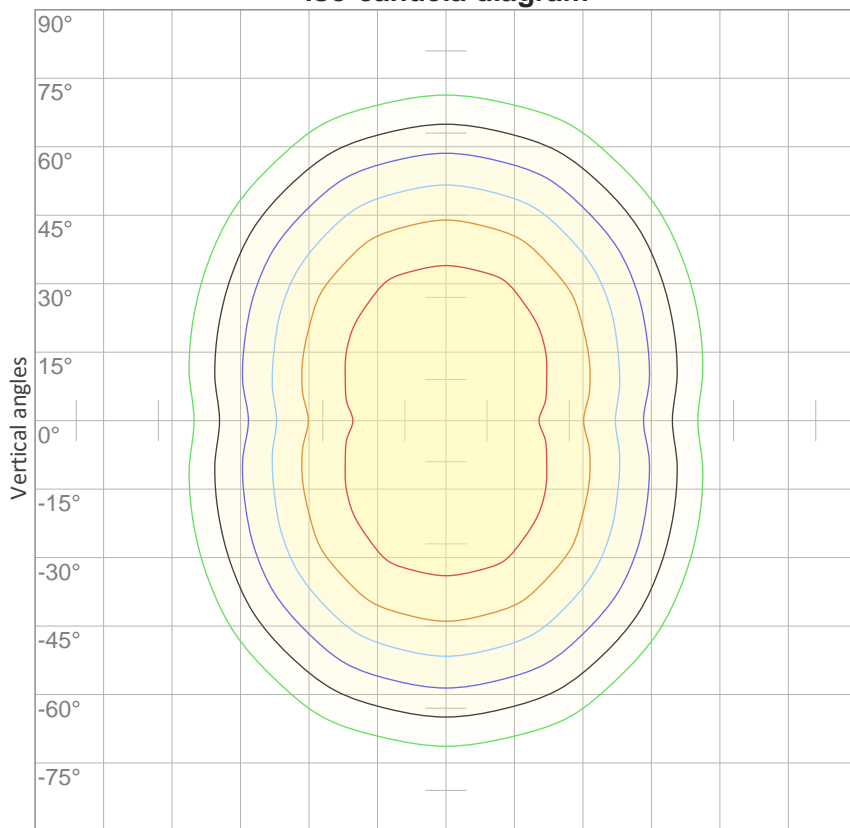
0°	9°	18°	27°	36°	45°	54°	63°	72°	81°	90°	99°	108°	117°	126°	135°	144°	153°	162°	171°
389	382	364	337	301	250	201	145	85	31	5	4	5	5	4	4	3	3	3	3
100%	98%	94%	87%	77%	64%	52%	37%	22%	8%	1%	1%	1%	1%	1%	1%	1%	1%	1%	1%

Intensities in 270° c-plane

0°	9°	18°	27°	36°	45°	54°	63°	72°	81°	90°	99°	108°	117°	126°	135°	144°	153°	162°	171°
389	392	389	378	355	326	288	244	195	147	118	113	103	93	81	68	55	40	22	5
100%	101%	100%	97%	91%	84%	74%	63%	50%	38%	30%	29%	26%	24%	21%	17%	14%	10%	6%	1%

Beam angle 50%	Field angle 10%	Cutoff angle 2,5%	Intensity ratio in 120° cone	Intensity ratio in 90° cone
130,2°	253,5°	304°	56,6%	37,1%

iso-candela diagram



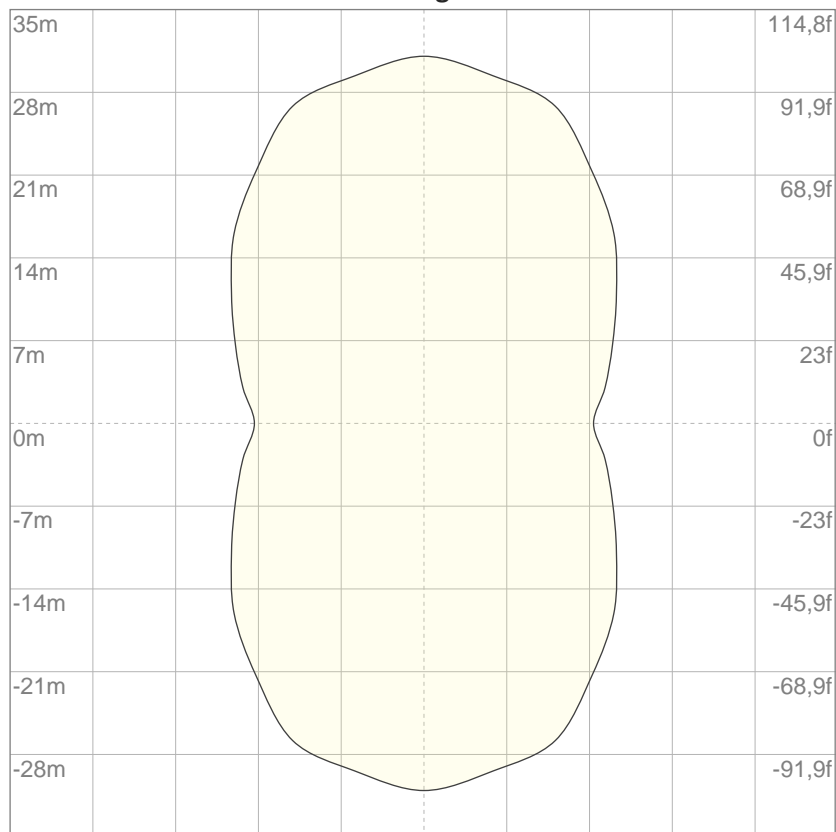
10%	39 cd
20%	78 cd
30%	117 cd
40%	156 cd
50%	195 cd
60%	233 cd
70%	272 cd
80%	311 cd
90%	350 cd

Conditions:

Number of c-planes: 16

Candela at center: 389 cd

iso-lux diagram



3%	0,117 lx
5%	0,195 lx
10%	0,389 lx
30%	1,17 lx
50%	1,95 lx

Conditions:

Number of c-planes: 16

Lux at center: 3,89 lx

Lux distribution on a surface when lamp is mounted at 10 meters from the surface.

Potência

Vttagem: 12,0 V

Corrente: 1,58 A

Frequência: 0 Hz

FP: 0,99

THD



THD corrente: n/a

THD tensão: n/a