

SLED9051 EX12 5W 2700K IP67 90 1m



Perfil flexível

Fluxo luminoso – 284 lm/m

Potência – 4,7 W/m

Intensidade pico – 95,1cd

CCT – 3015K



IRC – 95,3

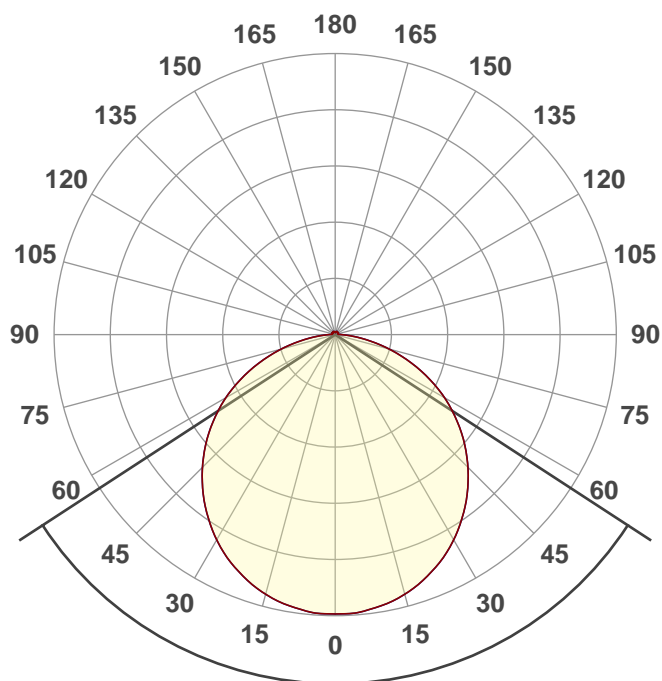
Coordenada CIE 1931 – x- 0,435 y- 0,402

24V

IP67

Data do ensaio

14/12/2022 11:16:03



Facho de abertura

113,8°

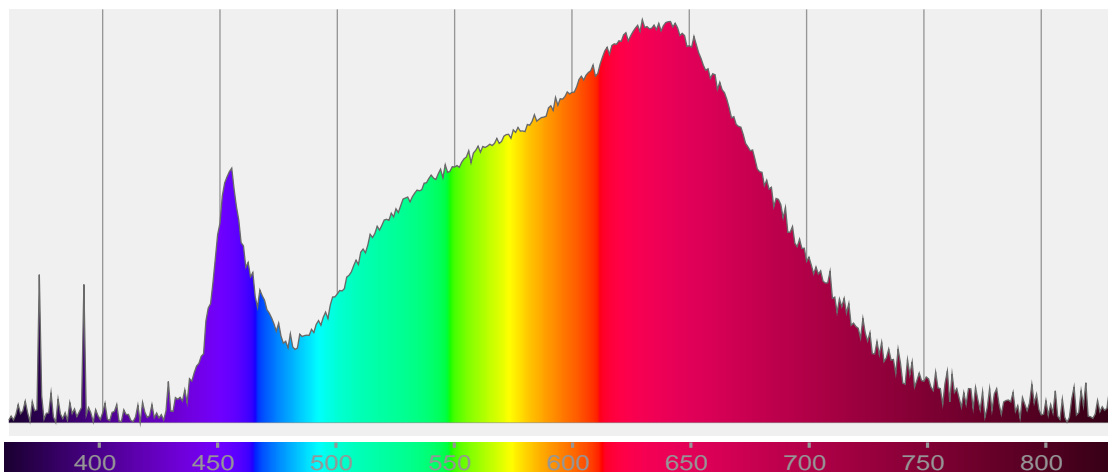
Rf 92,3

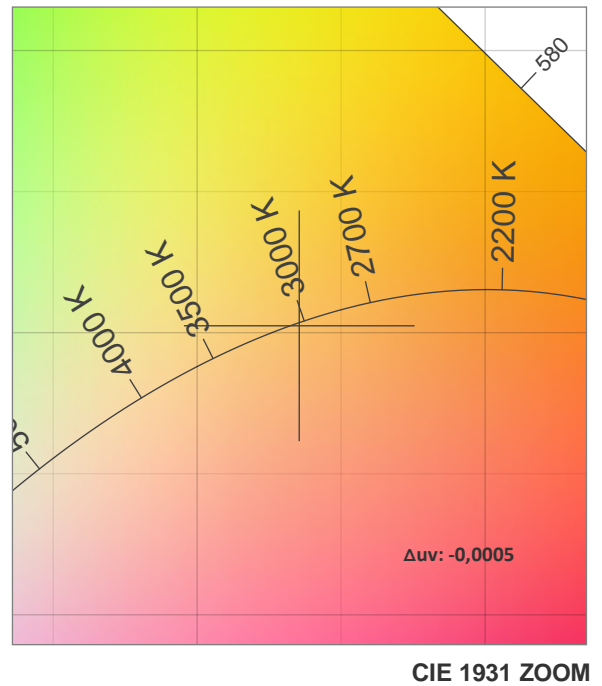
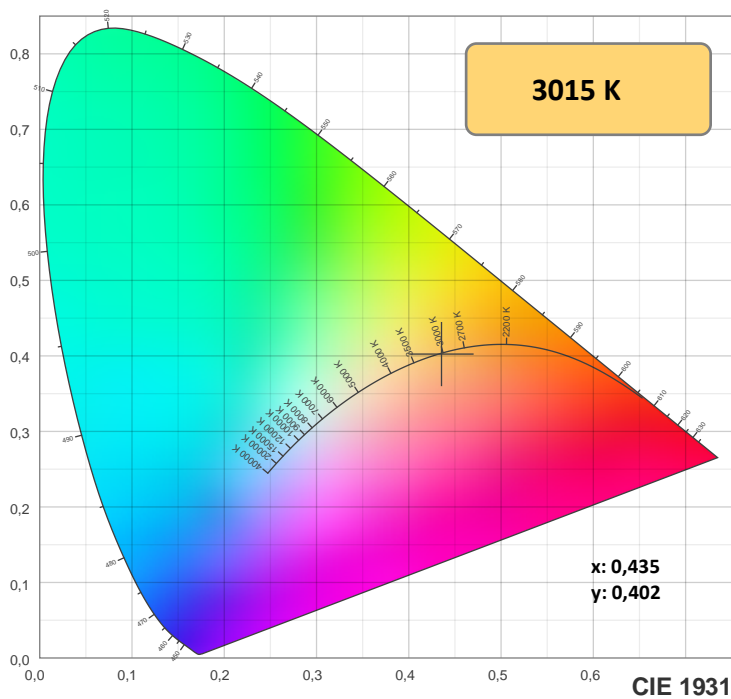
Fidelity index Rf

Rg 101,0

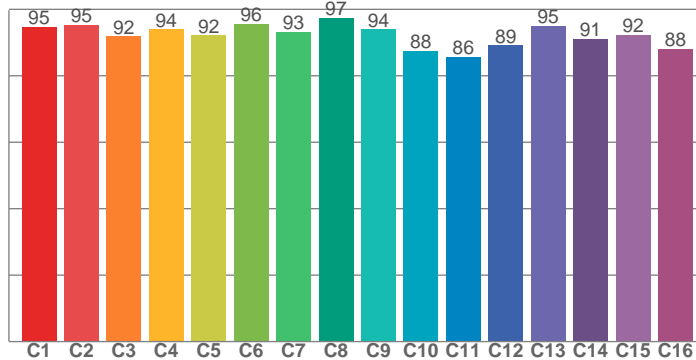
Gamut index Rg

Hue Bin	R _f	Shifts (%)	
		Chroma	Hue
1	95	-2%	0%
2	95	-2%	1%
3	92	-1%	4%
4	94	-1%	2%
5	92	-2%	2%
6	96	2%	0%
7	93	-1%	0%
8	97	-1%	-1%
9	94	-2%	3%
10	88	-1%	8%
11	86	2%	11%
12	89	5%	4%
13	95	3%	-1%
14	91	6%	-4%
15	92	1%	-4%
16	88	2%	-10%

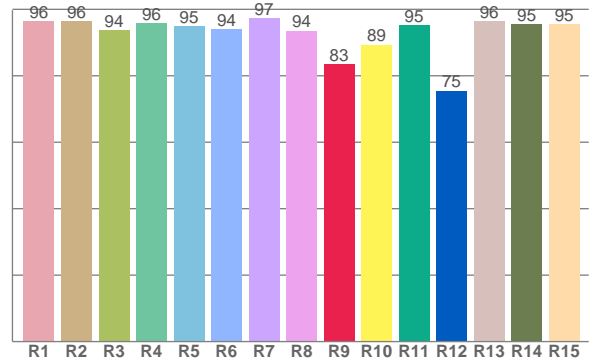




TM-30: 92,3



CRI: 95,3 (R1-R8)



CRIRA R1-R8 / CRIR R1-R15

R1	R2	R3	R4	R5	R6	R7	R8	R9	R10	R11	R12	R13	R14	R15
96,4	96,4	93,7	95,9	94,8	93,9	97,3	93,5	83,5	89,3	95,2	75,5	96,4	95,5	95,4

TM30 valores C. 16 valores extraídos dos 99.

C1	C2	C3	C4	C5	C6	C7	C8	C9	C10	C11	C12	C13	C14	C15	C16
94,6	95,4	91,9	93,9	92,2	95,6	93,3	97,4	94,0	87,6	85,7	89,2	95,0	91,2	92,3	88,2

Parametros de cor

Temperatura de cor	Índice de reprodução de cor	Reprodução de cor vermelho R9	Color fidelity	Color gamut	Color quality scale	Coordenada de cor cie 1931	Coordenada de cor cie 1931	Coordenada de cor	Coordenada de cor	Color deviation from black body
CCT	IRC	CRI R9	TM30 Rf	TM30 Rg	CQS	x	y	u	v	Δuv
3015 K	95,3	83,5	92,3	101,0	92,0	0,435	0,402	0,250	0,347	-0,0005

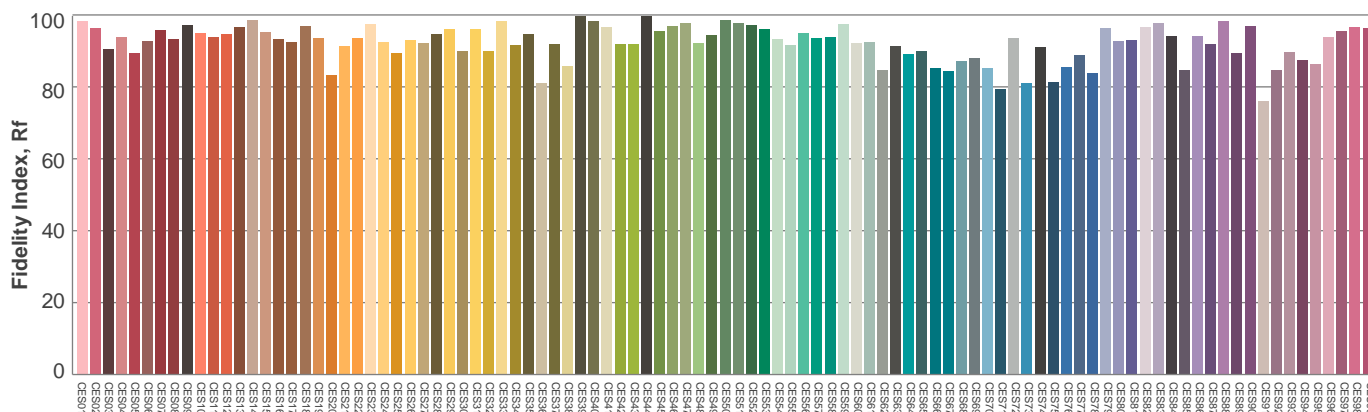
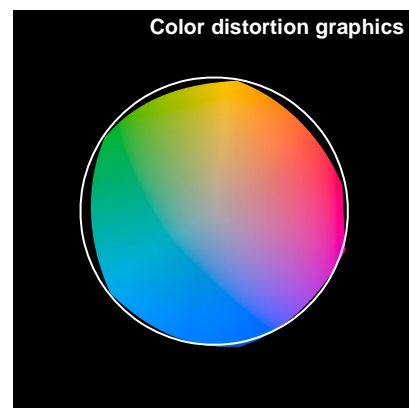
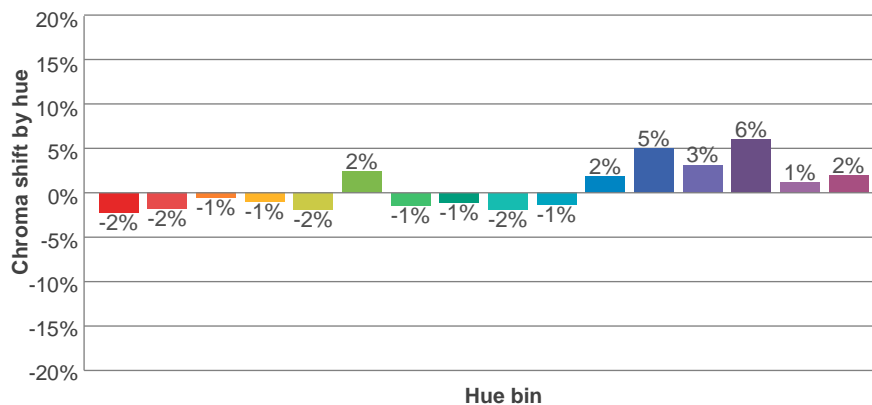
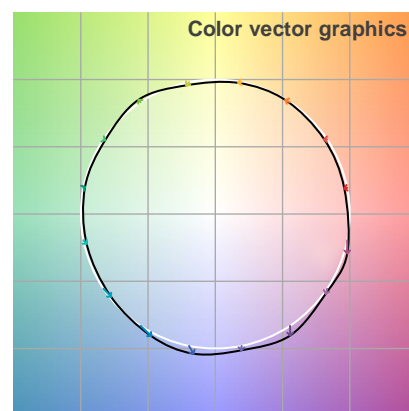
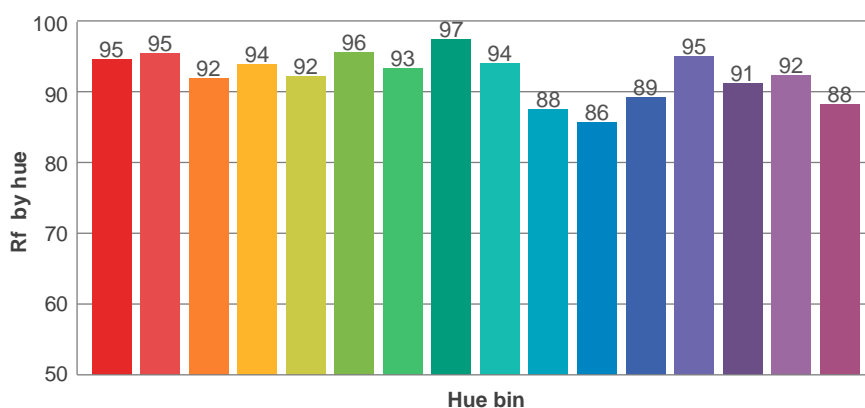
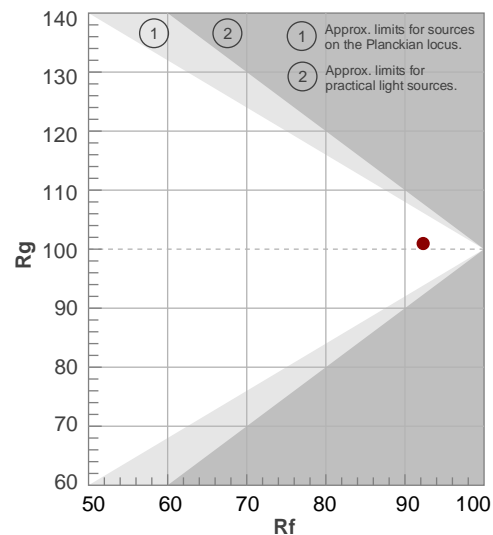
Rf 92,3

Fidelity index Rf

Rg 101,0

Gamut index Rg

Hue Bin	R _f	Shifts (%)	
		Chroma	Hue
1	95	-2%	0%
2	95	-2%	1%
3	92	-1%	4%
4	94	-1%	2%
5	92	-2%	2%
6	96	2%	0%
7	93	-1%	0%
8	97	-1%	-1%
9	94	-2%	3%
10	88	-1%	8%
11	86	2%	11%
12	89	5%	4%
13	95	3%	-1%
14	91	6%	-4%
15	92	1%	-4%
16	88	2%	-10%



Glare Evaluation According to UGR

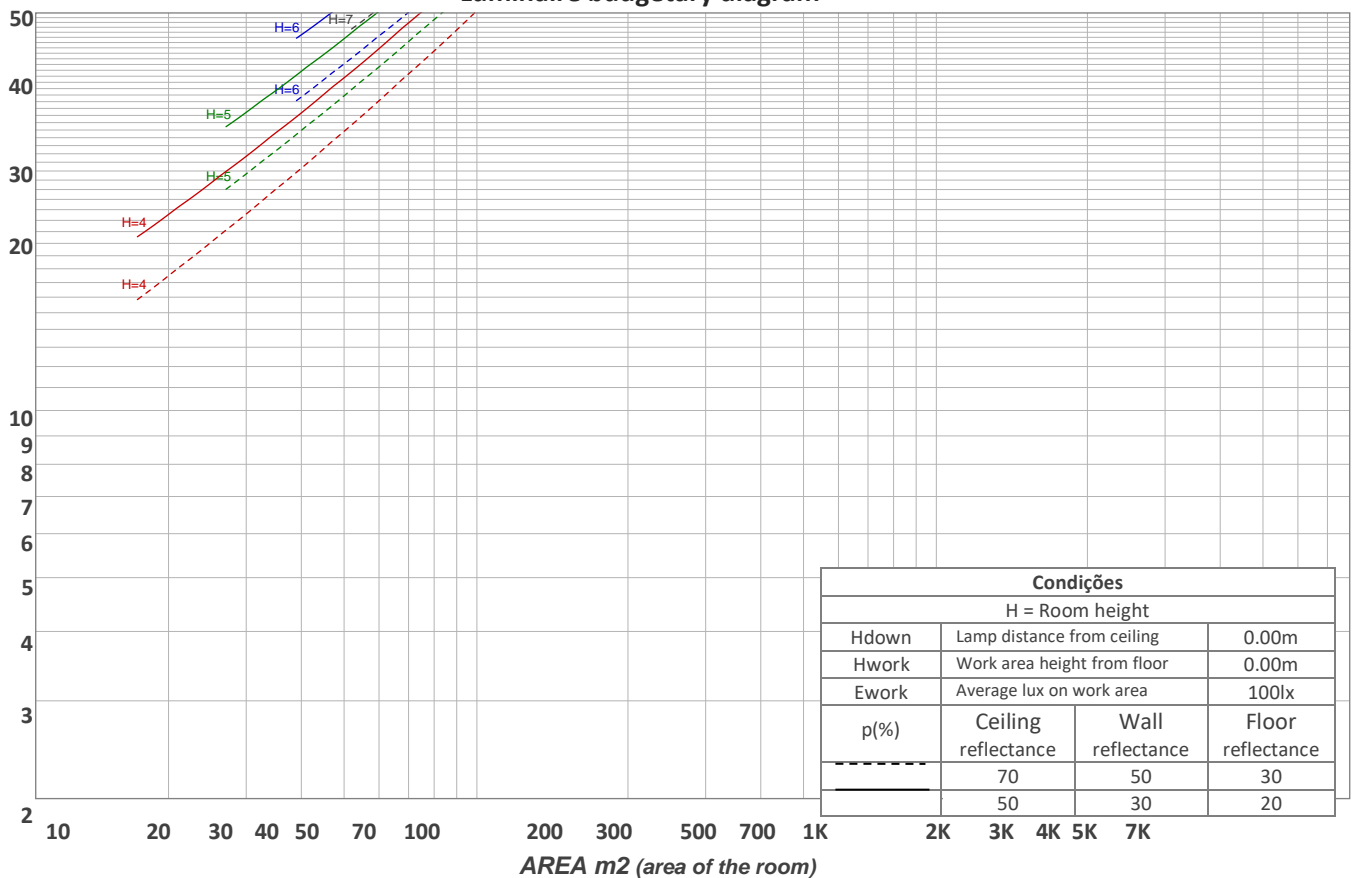
p Ceiling		70	70	50	50	30	70	70	50	50	30
p Walls		50	30	50	30	30	50	30	50	30	30
p Floor		20	20	20	20	20	20	20	20	20	20
Room size X Y		Viewing direction at right angles to lamp axis					Viewing direction parallel to lamp axis				
2H	2H	17,2	18,4	17,4	18,7	19,0	17,2	18,4	17,4	18,7	19,0
	3H	18,7	19,9	19,1	20,2	20,5	18,7	19,9	19,1	20,2	20,5
	4H	19,3	20,5	19,8	20,8	21,1	19,3	20,5	19,8	20,8	21,1
	6H	19,9	20,9	20,2	21,2	21,6	19,9	20,9	20,2	21,2	21,6
	8H	20,0	21,0	20,4	21,4	21,8	20,0	21,0	20,4	21,4	21,8
	12H	20,1	21,1	20,5	21,5	22,0	20,1	21,1	20,5	21,5	22,0
4H	2H	17,8	19,0	18,2	19,3	19,6	17,8	19,0	18,2	19,3	19,6
	3H	19,6	20,6	20,0	21,0	21,4	19,6	20,6	20,0	21,0	21,4
	4H	20,3	21,2	20,8	21,6	22,2	20,3	21,2	20,8	21,6	22,2
	6H	20,9	21,8	21,4	22,2	22,6	20,9	21,8	21,4	22,2	22,6
	8H	21,1	21,9	21,6	22,3	22,7	21,1	21,9	21,6	22,3	22,7
	12H	21,3	21,9	21,8	22,4	22,9	21,3	21,9	21,8	22,4	22,9
8H	4H	20,6	21,4	21,1	21,8	22,2	20,6	21,4	21,1	21,8	22,2
	6H	21,3	21,9	21,9	22,5	23,0	21,3	21,9	21,9	22,5	23,0
	8H	21,7	22,2	22,2	22,8	23,4	21,7	22,2	22,2	22,8	23,4
	12H	21,9	22,4	22,6	22,9	23,6	21,9	22,4	22,6	22,9	23,6
12H	4H	20,6	21,3	21,1	21,7	22,2	20,6	21,3	21,1	21,7	22,2
	6H	21,4	22,0	22,0	22,5	23,2	21,4	22,0	22,0	22,5	23,2
	8H	21,8	22,2	22,4	22,8	23,4	21,8	22,2	22,4	22,8	23,4
Variation of the observer position for the luminaire distance S											
S = 1.0H		0,1 / -0,1					0,1 / -0,1				
S = 1.5H		0,1 / -0,2					0,1 / -0,2				
S = 2.0H		0,4 / -0,4					0,4 / -0,4				
Standard table		n/a					n/a				
Correction summand		n/a					n/a				
Corrected glare indices referring to 284 lm total luminous flux											

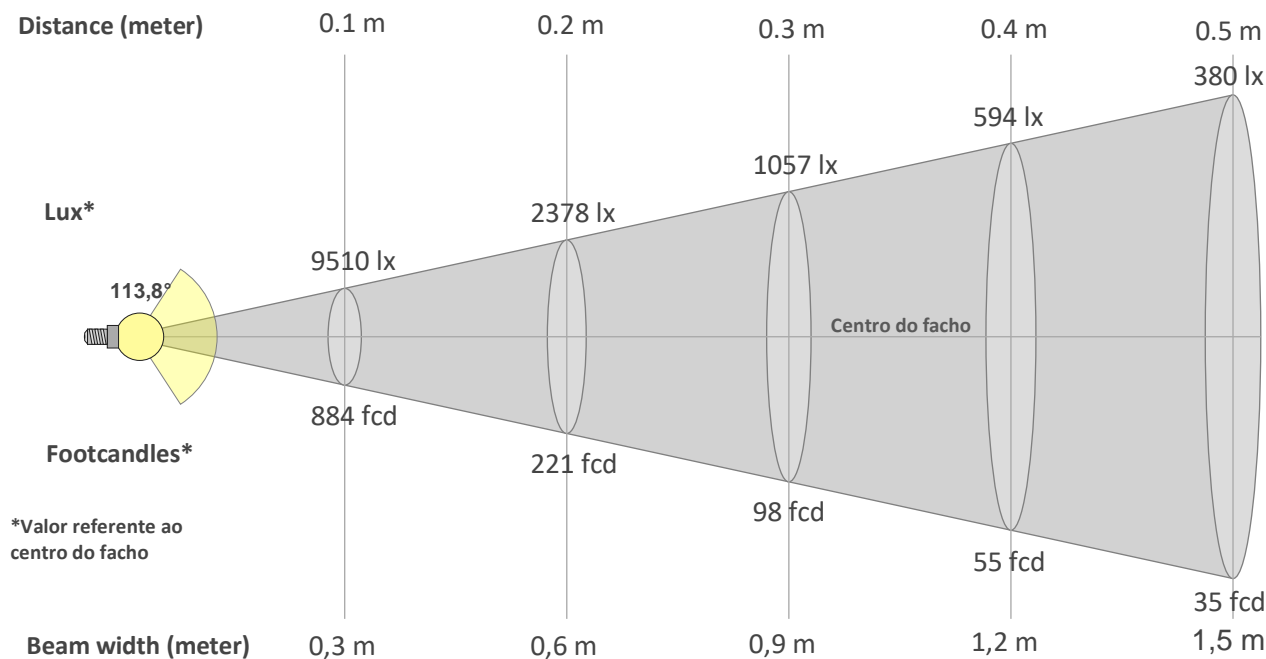
Coeficiente de utilização

Ceiling reflectance	80				70				50			30			10			0
Wall reflectance	70	50	30	10	70	50	30	10	50	30	10	50	30	10	50	30	10	0
Floor reflectance	20	20	20	20	20	20	20	20	20	20	20	20	20	20	20	20	20	0
RCR	(RCR: Room Cavity Ratio) Room Values are expressed as percentage of Lumens delivered to the task surface																	
0	118	118	118	118	115	115	115	115	110	110	110	105	105	105	100	100	100	98
1	108	103	99	95	105	100	96	93	96	92	89	91	89	86	87	85	83	81
2	98	90	83	77	95	87	81	76	83	78	73	80	75	71	76	73	69	67
3	89	78	70	64	86	77	69	63	73	67	61	70	65	60	67	63	59	56
4	82	69	61	54	79	68	60	53	65	58	52	62	56	51	60	55	50	48
5	75	62	53	46	73	61	52	46	58	51	45	56	49	44	54	48	44	41
6	69	56	47	40	67	55	46	40	53	45	39	51	44	39	49	43	38	36
7	64	50	42	35	62	50	41	35	48	40	35	46	39	34	45	39	34	32
8	60	46	37	32	58	45	37	31	44	36	31	42	36	31	41	35	30	28
9	56	42	34	28	54	41	34	28	40	33	28	39	32	28	38	32	27	25
10	52	39	31	26	51	38	31	26	37	30	25	36	30	25	35	29	25	23

Quantidade de luminárias

Luminaire budgetary diagram





Beam intensities from 1-20m

1m	2m	3m	4m	5m	6m	7m	8m	9m	10m	11m	12m	13m	14m	15m	16m	17m	18m	19m	20m
3,3ft	6,6ft	9,8ft	13,1ft	16,4ft	19,7ft	23ft	26,2ft	29,5ft	32,8ft	36,1ft	39,4ft	42,7ft	45,9ft	49,2ft	52,5ft	55,8ft	59,1ft	62,3ft	65,6ft
95lx	24lx	11lx	6lx	4lx	3lx	2lx	1lx	1lx	1lx	1lx	1lx	1lx	0lx	0lx	0lx	0lx	0lx	0lx	0lx
8,8fcd	2,2fcd	1fcd	0,6fcd	0,4fcd	0,2fcd	0,2fcd	0,1fcd	0,1fcd	0,1fcd	0,1fcd	0,1fcd	0,1fcd	0fcd	0fcd	0fcd	0fcd	0fcd	0fcd	0fcd

Intensities in 0° c-plane

0°	5°	10°	15°	20°	25°	30°	35°	40°	45°	50°	55°	60°	65°	70°	75°	80°	85°	90°	95°
95,1	94,9	93,5	91,5	88,6	85,0	80,7	75,6	70,0	63,9	57,4	50,3	43,0	35,0	26,9	19,0	11,6	5,8	2,1	1,1
100%	100%	98%	96%	93%	89%	85%	79%	74%	67%	60%	53%	45%	37%	28%	20%	12%	6%	2%	1%

Intensities in 90° c-plane

0°	5°	10°	15°	20°	25°	30°	35°	40°	45°	50°	55°	60°	65°	70°	75°	80°	85°	90°	95°
95,1	94,9	93,5	91,5	88,6	85,0	80,7	75,6	70,0	63,9	57,4	50,3	43,0	35,0	26,9	19,0	11,6	5,8	2,1	1,1
100%	100%	98%	96%	93%	89%	85%	79%	74%	67%	60%	53%	45%	37%	28%	20%	12%	6%	2%	1%

Intensities in 180° c-plane

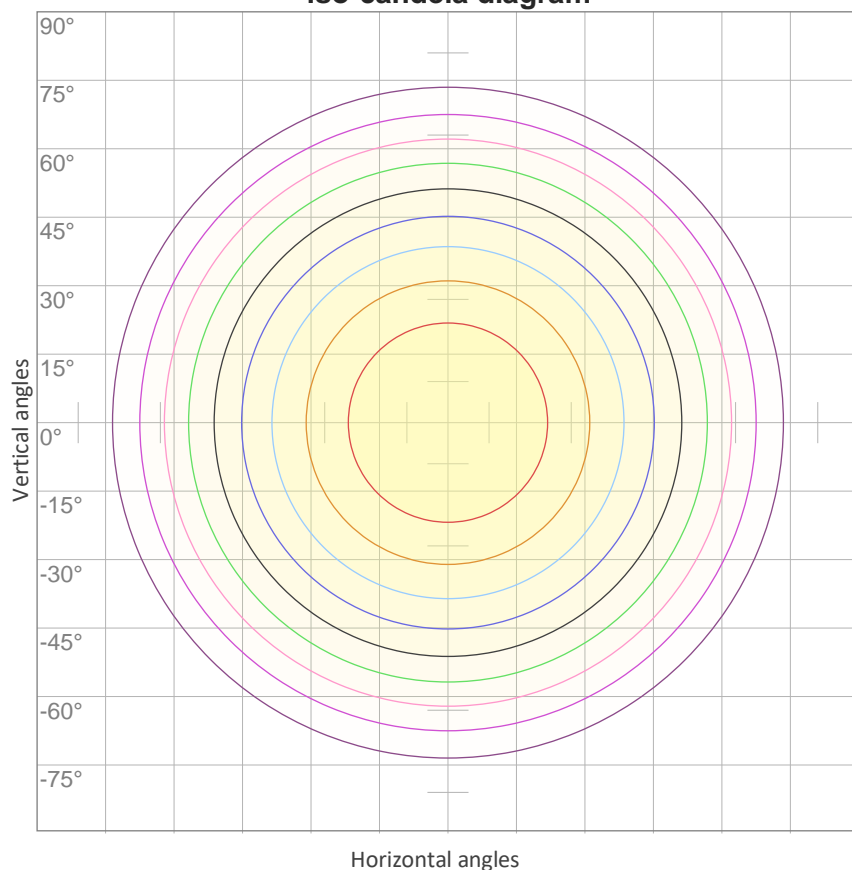
0°	5°	10°	15°	20°	25°	30°	35°	40°	45°	50°	55°	60°	65°	70°	75°	80°	85°	90°	95°
95,1	94,9	93,5	91,5	88,6	85,0	80,7	75,6	70,0	63,9	57,4	50,3	43,0	35,0	26,9	19,0	11,6	5,8	2,1	1,1
100%	100%	98%	96%	93%	89%	85%	79%	74%	67%	60%	53%	45%	37%	28%	20%	12%	6%	2%	1%

Intensities in 270° c-plane

0°	5°	10°	15°	20°	25°	30°	35°	40°	45°	50°	55°	60°	65°	70°	75°	80°	85°	90°	95°
95,1	94,9	93,5	91,5	88,6	85,0	80,7	75,6	70,0	63,9	57,4	50,3	43,0	35,0	26,9	19,0	11,6	5,8	2,1	1,1
100%	100%	98%	96%	93%	89%	85%	79%	74%	67%	60%	53%	45%	37%	28%	20%	12%	6%	2%	1%

Beam angle 50%	Field angle 10%	Cutoff angle 2,5%	Intensity ratio in 120° cone	Intensity ratio in 90° cone
113,8°	163,3°	178,6°	75,9%	51,4%

iso-candela diagram



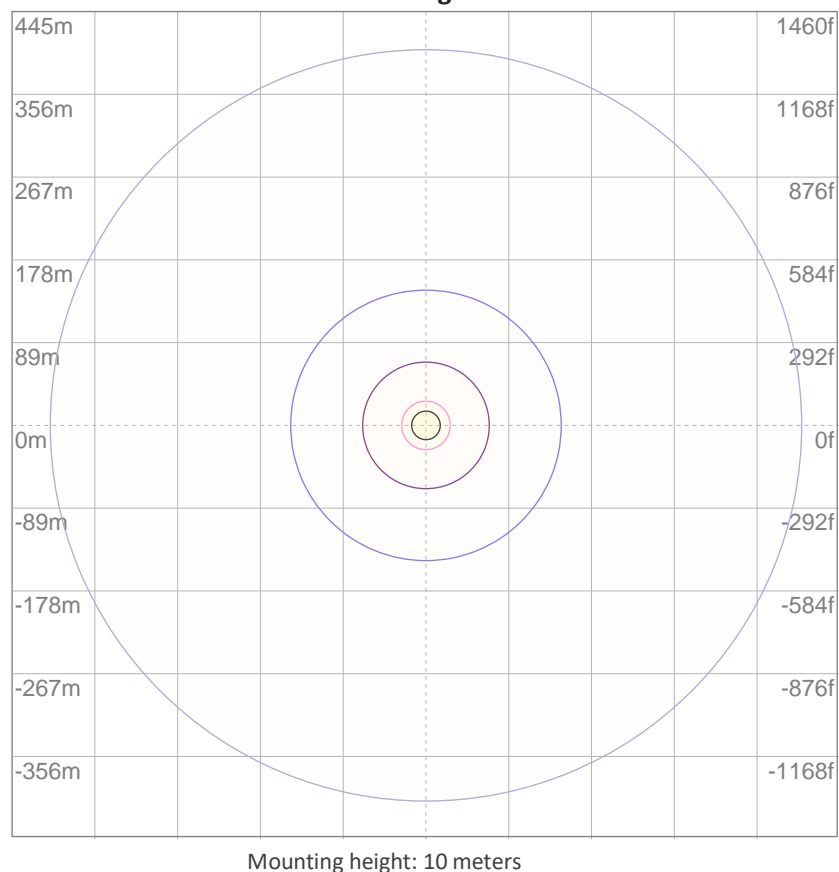
10%	10 cd
20%	19 cd
30%	29 cd
40%	38 cd
50%	48 cd
60%	57 cd
70%	67 cd
80%	76 cd
90%	86 cd

Conditions:

Number of c-planes: 16

Candela at center: 95 cd

iso-lux diagram



3%	28,5m lx
5%	47,6m lx
10%	95,1m lx
30%	0,285 lx
50%	0,476 lx

Conditions:

Number of c-planes: 16

Lux at center: 0,951 lx

Lux distribution on a surface when lamp is mounted at 10 meters from the surface.

Potência

Vttagem: 24,0 V
Corrente: 0,196 A
Frequência: 0 Hz
FP: 1,0

THD



THD corrente: n/a
THD tensão: n/a