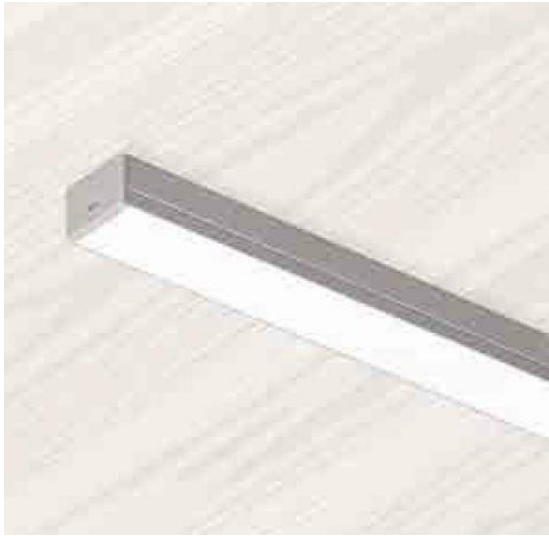


9003 SLED9003 BRANCA FITA 19WM 3000K 80 - 1m



Luminária linear de sobrepor em forro de gesso ou Dry-wall com iluminação difusa. Corpo em alumínio extrudado com acabamento na cor branca. Difusor em acrílico extrudado leitoso. Indicado para residência, recepção, escritório etc.

Fluxo luminoso – 1108 lm/m

Potência – 18,7 W/m

Intensidade pico – 367cd

CCT – 2872K



IRC – 82,2

Coordenada CIE 1931 – x- 0,444 y- 0,403

A x L - 12x24

Peso - 0,15kg/m

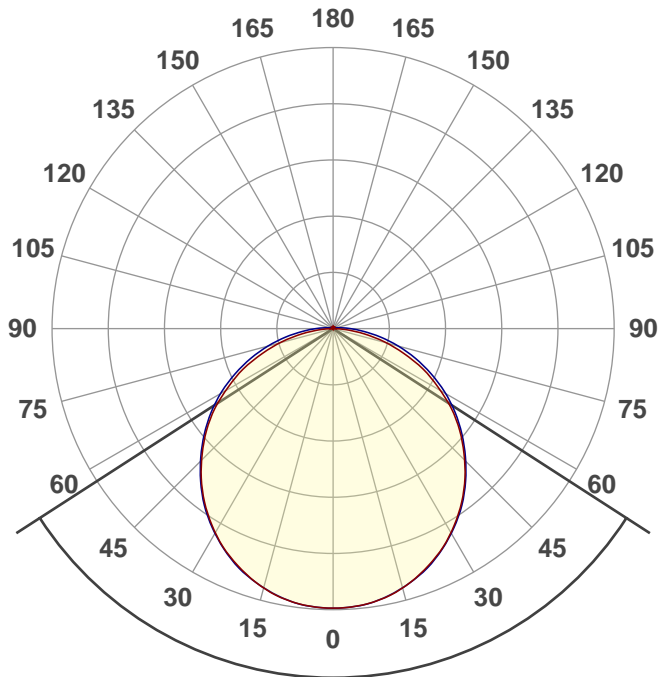
IP - 20 - Uso Interno

IK - 00 – Não aplicável

Alimentação - 12vdc

Data do ensaio

05/10/2020 11:09:09



Facho de abertura

114,3°

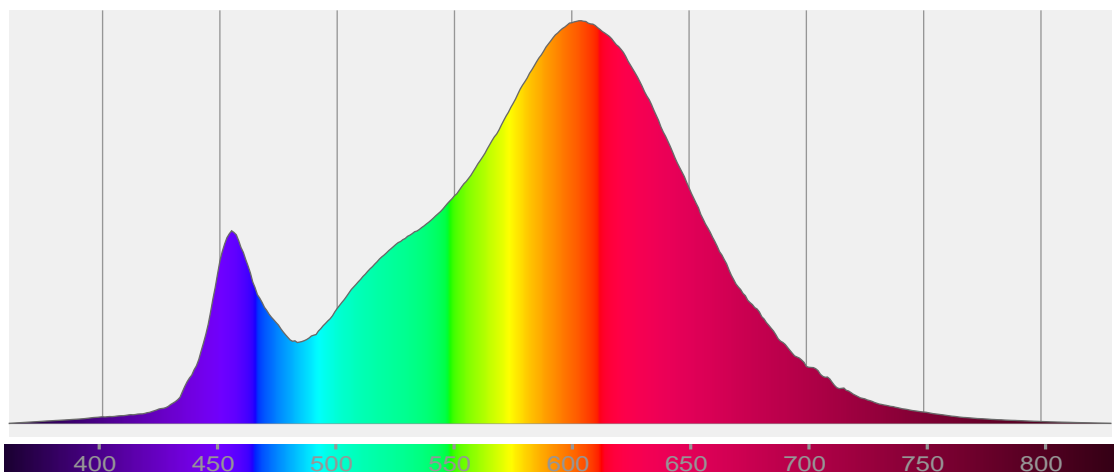
Rf 84,3

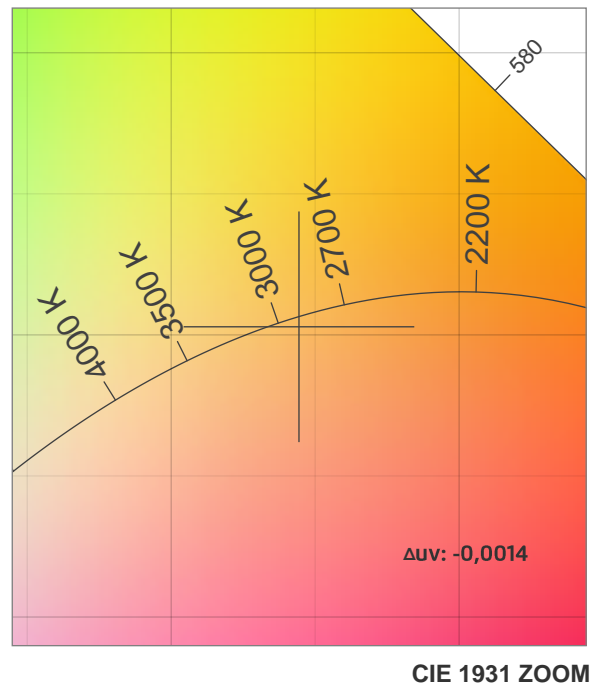
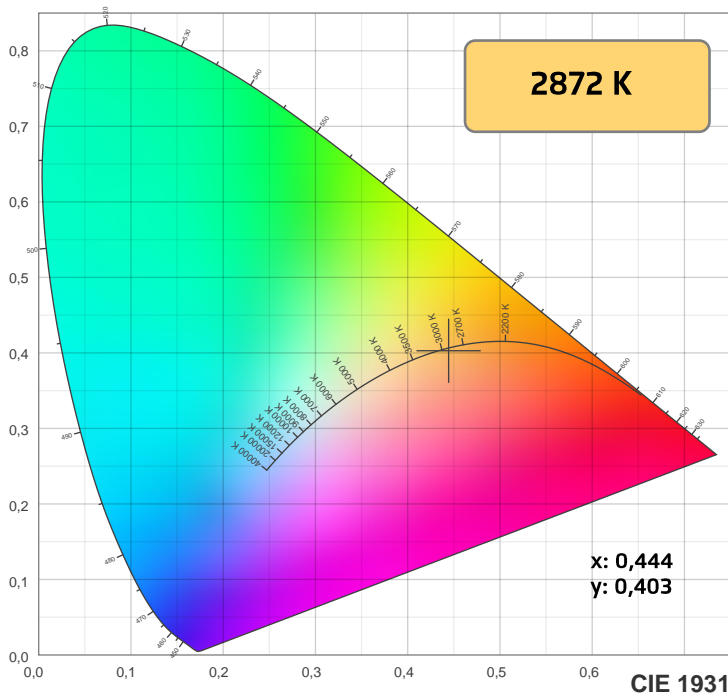
Fidelity index Rf

Rg 94,6

Gamut index Rg

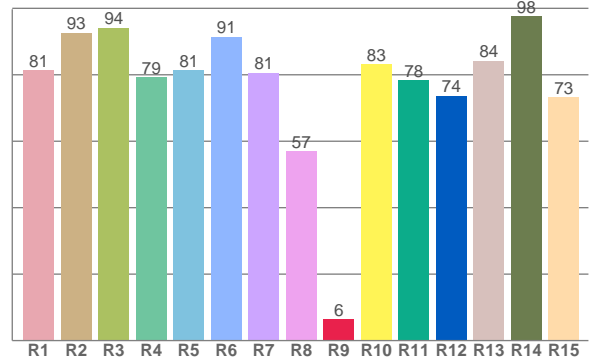
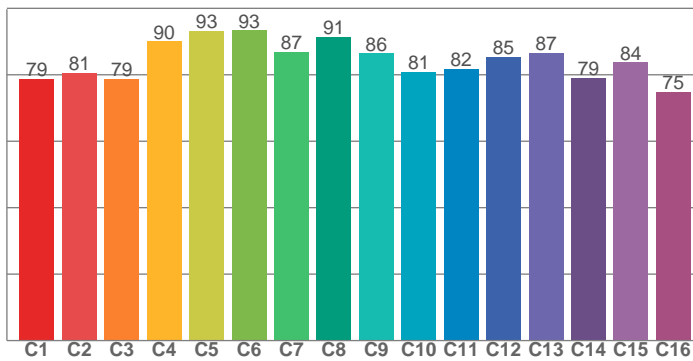
Hue Bin	R _f	Shifts (%)	
		Chroma	Hue
1	79	-12%	1%
2	81	-8%	7%
3	79	-3%	11%
4	90	-1%	5%
5	93	1%	3%
6	93	1%	-3%
7	87	-6%	-5%
8	91	-5%	0%
9	86	-6%	6%
10	81	-3%	12%
11	82	1%	13%
12	85	7%	2%
13	87	4%	-9%
14	79	4%	-17%
15	84	-4%	-9%
16	75	-10%	-17%





TM-30: 84,3

CRI: 82,2 (R1-R8)



CRlra R1-R8 / CRlre R1-R15

R1	R2	R3	R4	R5	R6	R7	R8	R9	R10	R11	R12	R13	R14	R15
81,3	92,7	94,2	79,2	81,5	91,5	80,6	57,0	6,4	83,2	78,4	73,6	84,2	97,6	73,1

TM30 valores C. 16 valores extraídos dos 99.

C1	C2	C3	C4	C5	C6	C7	C8	C9	C10	C11	C12	C13	C14	C15	C16
78,7	80,6	78,8	90,1	93,3	93,3	86,8	91,5	86,5	80,8	81,8	85,4	86,6	79,1	83,7	74,8

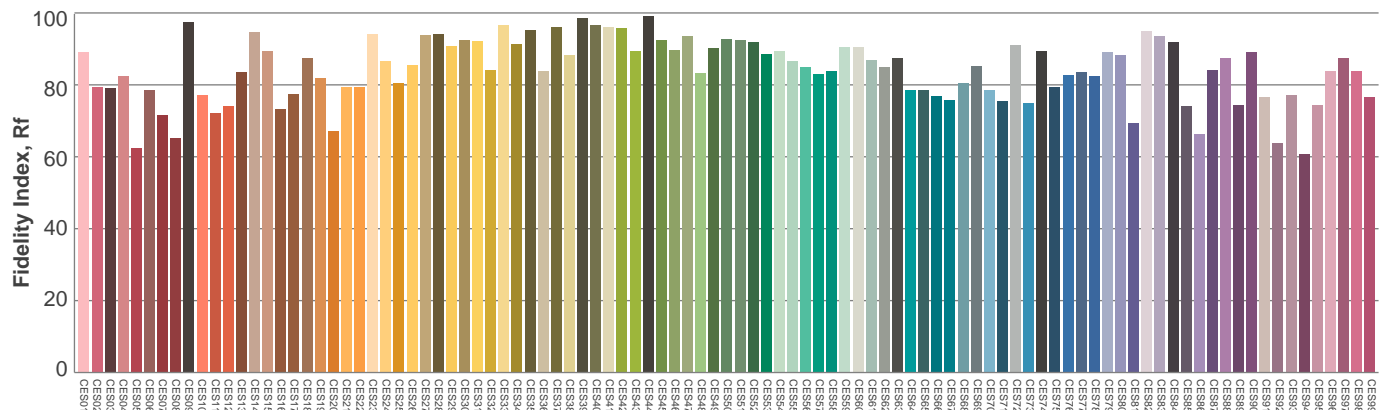
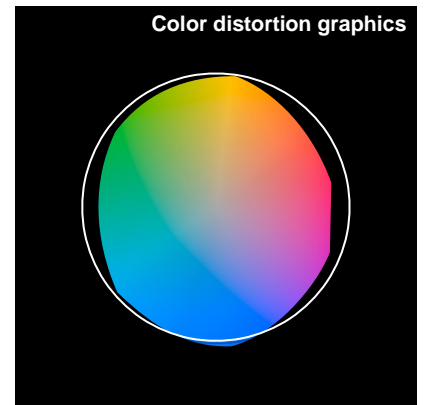
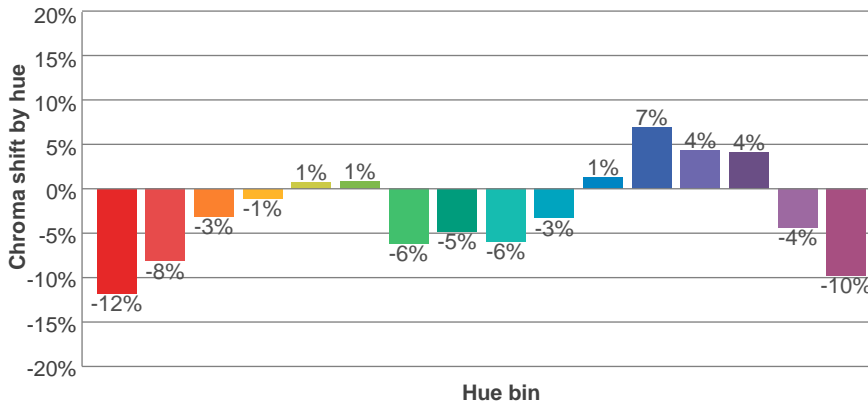
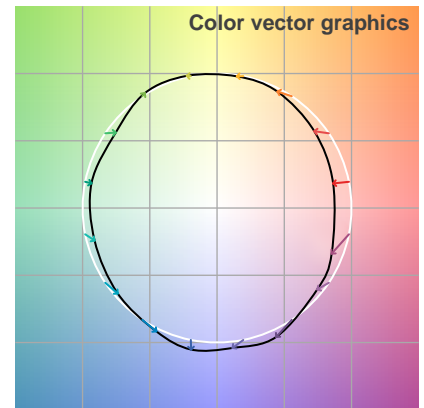
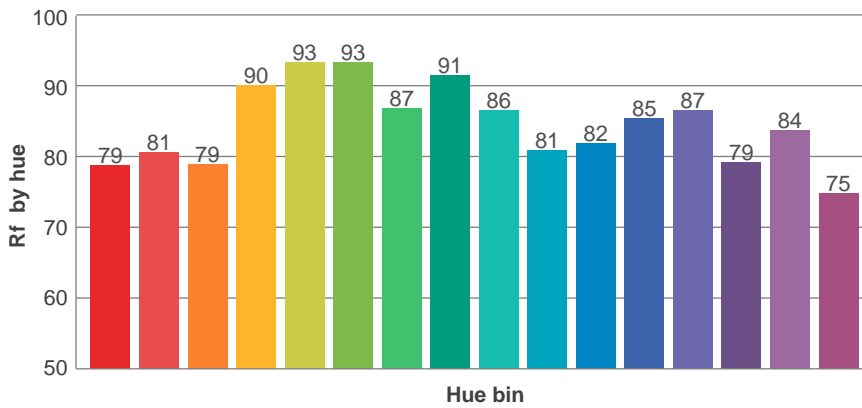
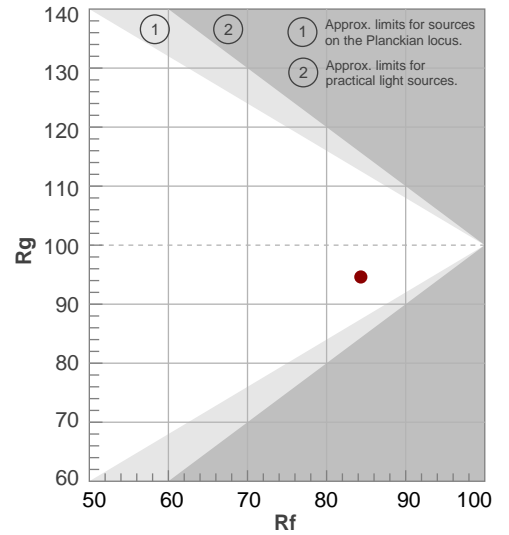
Parametros de cor

Temperatura de cor	Indice de reprodução de cor	Reprodução de cor vermelho R9	Color fidelity	Color gamut	Color quality scale	Coordenada de cor cie 1931	Coordenada de cor cie 1931	Coordenada de cor	Coordenada de cor	Color divition from black body
CCT	IRC	CRI R9	TM30 Rf	TM30 Rg	CQS	x	y	u	v	Δuv
2872 K	82,2	6,4	84,3	94,6	81,5	0,444	0,403	0,256	0,348	-0,0014

Rf 84,3
Fidelity index Rf

Rg 94,6
Gamut index Rg

Hue Bin	R _f	Shifts (%)	
		Chroma	Hue
1	79	-12%	1%
2	81	-8%	7%
3	79	-3%	11%
4	90	-1%	5%
5	93	1%	3%
6	93	1%	-3%
7	87	-6%	-5%
8	91	-5%	0%
9	86	-6%	6%
10	81	-3%	12%
11	82	1%	13%
12	85	7%	2%
13	87	4%	-9%
14	79	4%	-17%
15	84	-4%	-9%
16	75	-10%	-17%



Avaliação todas as amostras de cores

Glare Evaluation According to UGR

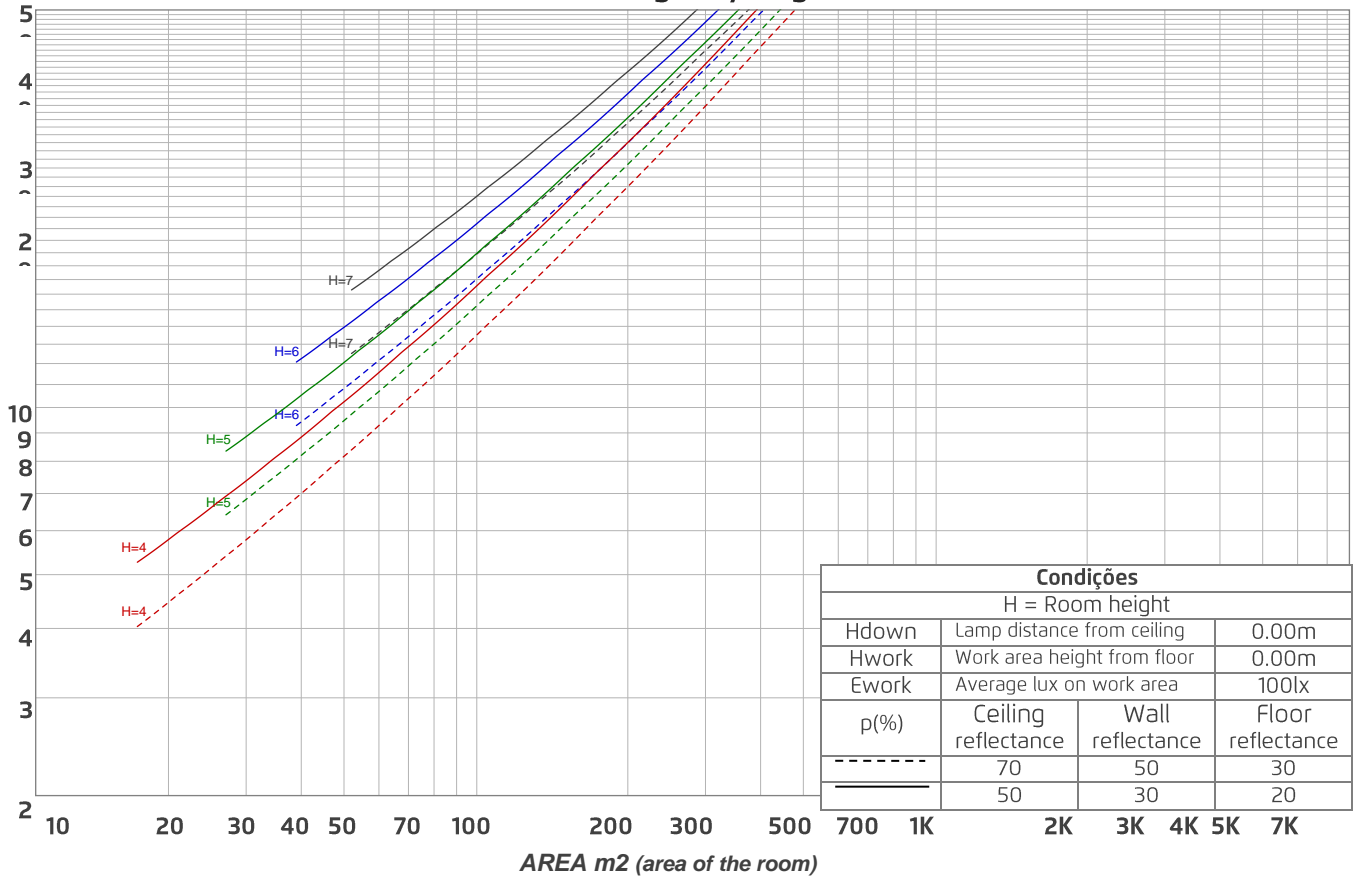
p Ceiling		70	70	50	50	30	70	70	50	50	30
p Walls		50	30	50	30	30	50	30	50	30	30
p Floor		20	20	20	20	20	20	20	20	20	20
Room size X Y		Viewing direction at right angles to lamp axis					Viewing direction parallel to lamp axis				
2H	2H	21,5	22,8	21,8	23,1	23,4	22,0	23,2	22,2	23,5	23,8
	3H	22,9	24,2	23,4	24,5	24,8	23,6	24,9	24,1	25,2	25,5
	4H	23,5	24,7	24,0	25,0	25,3	24,5	25,7	24,9	26,0	26,3
	6H	24,0	25,1	24,3	25,4	25,8	25,3	26,3	25,6	26,6	27,1
	8H	24,1	25,1	24,5	25,5	25,9	25,6	26,6	25,9	27,0	27,4
	12H	24,1	25,2	24,5	25,5	26,0	25,9	26,9	26,3	27,3	27,7
4H	2H	22,2	23,4	22,6	23,7	24,0	22,5	23,7	23,0	24,0	24,3
	3H	23,9	24,9	24,3	25,3	25,8	24,5	25,6	24,9	25,9	26,4
	4H	24,5	25,5	25,0	25,9	26,5	25,4	26,4	25,9	26,8	27,4
	6H	25,1	26,0	25,6	26,3	26,7	26,3	27,2	26,8	27,6	28,0
	8H	25,2	26,0	25,7	26,4	26,9	26,7	27,5	27,2	27,9	28,3
	12H	25,3	26,0	25,8	26,4	27,0	27,1	27,8	27,6	28,2	28,7
8H	4H	24,9	25,7	25,5	26,1	26,6	25,7	26,5	26,2	26,9	27,3
	6H	25,6	26,2	26,1	26,7	27,3	26,7	27,4	27,3	27,9	28,4
	8H	25,9	26,4	26,4	27,0	27,6	27,3	27,8	27,8	28,4	29,0
	12H	26,0	26,5	26,6	27,0	27,7	27,8	28,3	28,4	28,8	29,4
12H	4H	25,0	25,7	25,5	26,1	26,6	25,7	26,4	26,2	26,8	27,3
	6H	25,7	26,3	26,3	26,8	27,5	26,8	27,4	27,4	27,9	28,6
	8H	26,0	26,5	26,6	27,0	27,7	27,4	27,9	28,0	28,4	29,0
Variation of the observer position for the luminaire distance S											
S = 1.0H		0,1 / -0,1					0,1 / -0,1				
S = 1.5H		0,1 / -0,3					0,1 / -0,1				
S = 2.0H		0,4 / -0,5					0,3 / -0,3				
Standard table		n/a					n/a				
Correction summand		n/a					n/a				
Corrected glare indices referring to 1108 lm total luminous flux											

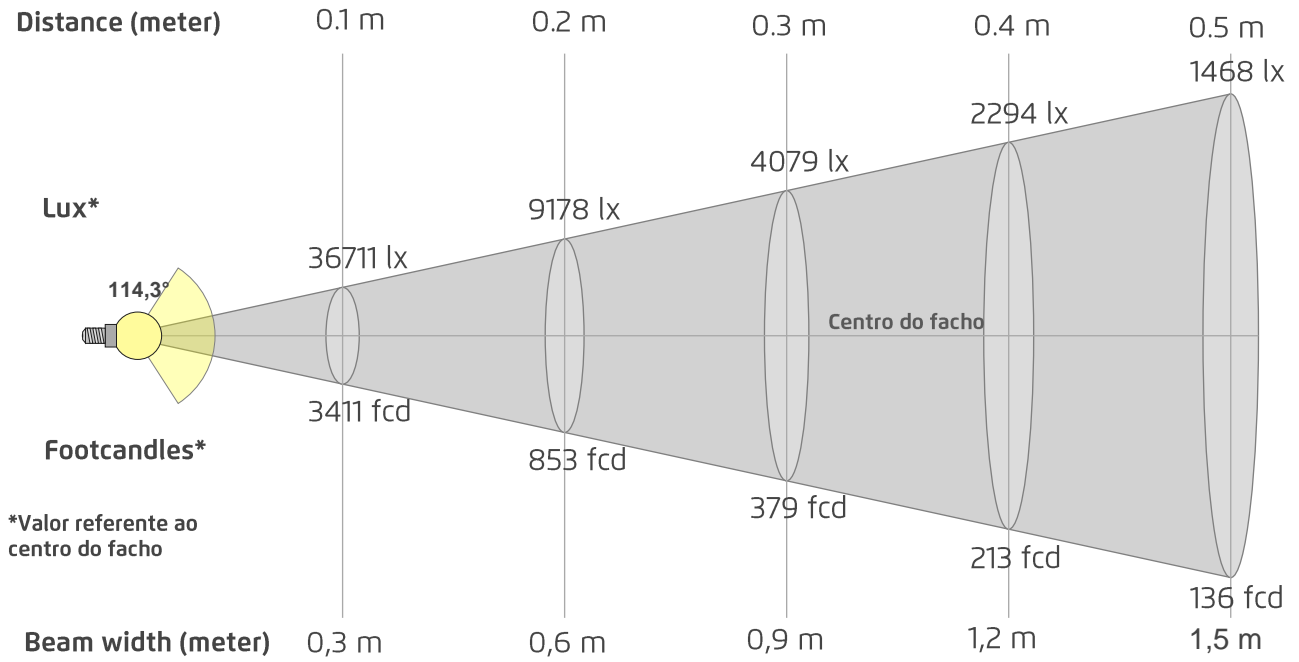
Coeficiente de utilização

Ceiling reflectance	80				70				50			30			10			0
Wall reflectance	70	50	30	10	70	50	30	10	50	30	10	50	30	10	50	30	10	0
Floor reflectance	20	20	20	20	20	20	20	20	20	20	20	20	20	20	20	20	20	0
RCR	(RCR: Room Cavity Ratio) Room Values are expressed as percentage of Lumens delivered to the task surface																	
0	119	119	119	119	116	116	116	116	110	110	110	105	105	105	100	100	100	98
1	108	103	98	94	105	100	96	92	95	92	89	91	88	86	87	85	83	81
2	98	89	82	76	95	87	80	75	83	77	73	79	75	71	76	72	69	67
3	89	78	69	63	86	76	68	62	73	66	61	70	64	59	67	62	58	56
4	81	69	60	53	79	67	59	52	65	57	51	62	56	51	60	54	50	47
5	75	61	52	45	72	60	51	45	58	50	44	56	49	44	54	48	43	41
6	69	55	46	40	67	54	46	39	52	44	39	50	43	38	49	43	38	36
7	64	50	41	35	62	49	41	35	47	40	34	46	39	34	44	38	34	31
8	59	46	37	31	58	45	37	31	43	36	31	42	35	30	41	35	30	28
9	55	42	33	28	54	41	33	28	40	33	28	39	32	27	38	31	27	25
10	52	39	31	25	51	38	30	25	37	30	25	36	29	25	35	29	25	23

Quantidade de luminárias

Luminaire budgetary diagram





Beam intensities from 1-20m

1m	2m	3m	4m	5m	6m	7m	8m	9m	10m	11m	12m	13m	14m	15m	16m	17m	18m	19m	20m
3,3ft	6,6ft	9,8ft	13,1ft	16,4ft	19,7ft	23ft	26,2ft	29,5ft	32,8ft	36,1ft	39,4ft	42,7ft	45,9ft	49,2ft	52,5ft	55,8ft	59,1ft	62,3ft	65,6ft
367lx	92lx	41lx	23lx	15lx	10lx	7lx	6lx	5lx	4lx	3lx	3lx	2lx	2lx	2lx	1lx	1lx	1lx	1lx	1lx
34,1fcd	8,5fcd	3,8fcd	2,1fcd	1,4fcd	0,9fcd	0,7fcd	0,5fcd	0,4fcd	0,3fcd	0,3fcd	0,2fcd	0,2fcd	0,2fcd	0,2fcd	0,1fcd	0,1fcd	0,1fcd	0,1fcd	0,1fcd

Intensities in 0° c-plane

0°	5°	10°	15°	20°	25°	30°	35°	40°	45°	50°	55°	60°	65°	70°	75°	80°	85°	90°	95°
367	366	361	353	341	326	309	290	268	244	219	193	163	134	103	73	44	19	3	2
100%	100%	98%	96%	93%	89%	84%	79%	73%	67%	60%	53%	44%	37%	28%	20%	12%	5%	1%	0%

Intensities in 90° c-plane

0°	5°	10°	15°	20°	25°	30°	35°	40°	45°	50°	55°	60°	65°	70°	75°	80°	85°	90°	95°
367	366	361	352	342	327	310	292	270	246	222	197	171	143	116	89	63	40	23	12
100%	100%	98%	96%	93%	89%	85%	79%	74%	67%	61%	54%	47%	39%	32%	24%	17%	11%	6%	3%

Intensities in 180° c-plane

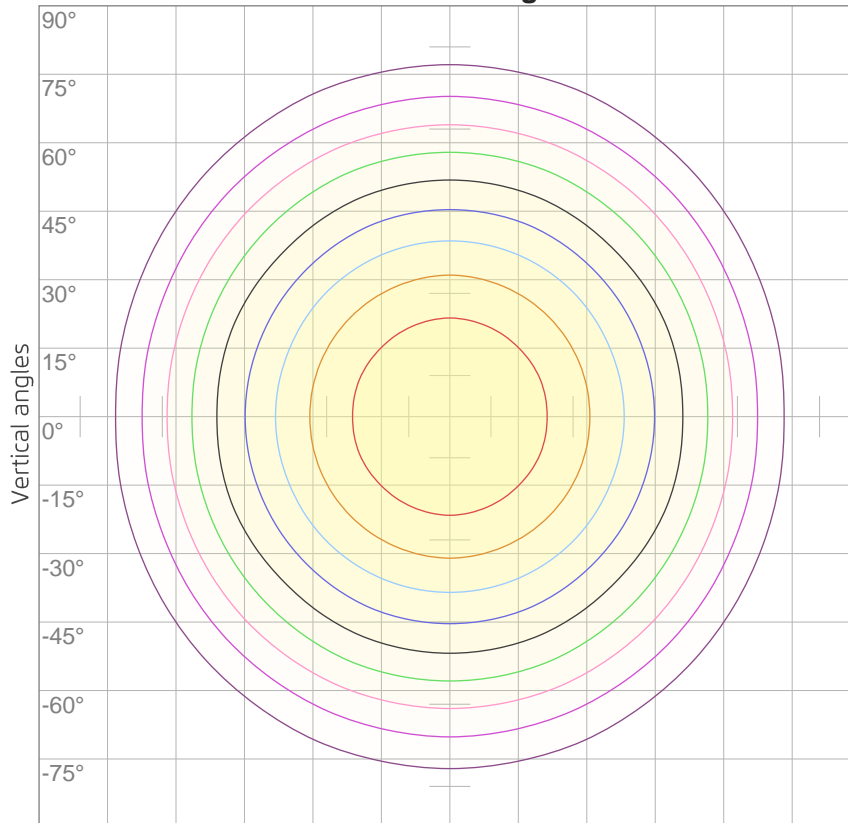
0°	5°	10°	15°	20°	25°	30°	35°	40°	45°	50°	55°	60°	65°	70°	75°	80°	85°	90°	95°
367	366	361	353	341	326	309	290	268	244	219	193	163	134	103	73	44	19	3	2
100%	100%	98%	96%	93%	89%	84%	79%	73%	67%	60%	53%	44%	37%	28%	20%	12%	5%	1%	0%

Intensities in 270° c-plane

0°	5°	10°	15°	20°	25°	30°	35°	40°	45°	50°	55°	60°	65°	70°	75°	80°	85°	90°	95°
367	366	361	352	342	327	310	292	270	246	222	197	171	143	116	89	63	40	23	12
100%	100%	98%	96%	93%	89%	85%	79%	74%	67%	61%	54%	47%	39%	32%	24%	17%	11%	6%	3%

Beam angle 50%	Field angle 10%	Cutoff angle 2,5%	Intensity ratio in 120° cone	Intensity ratio in 90° cone
114,3°	167,6°	185,7°	74,9%	50,7%

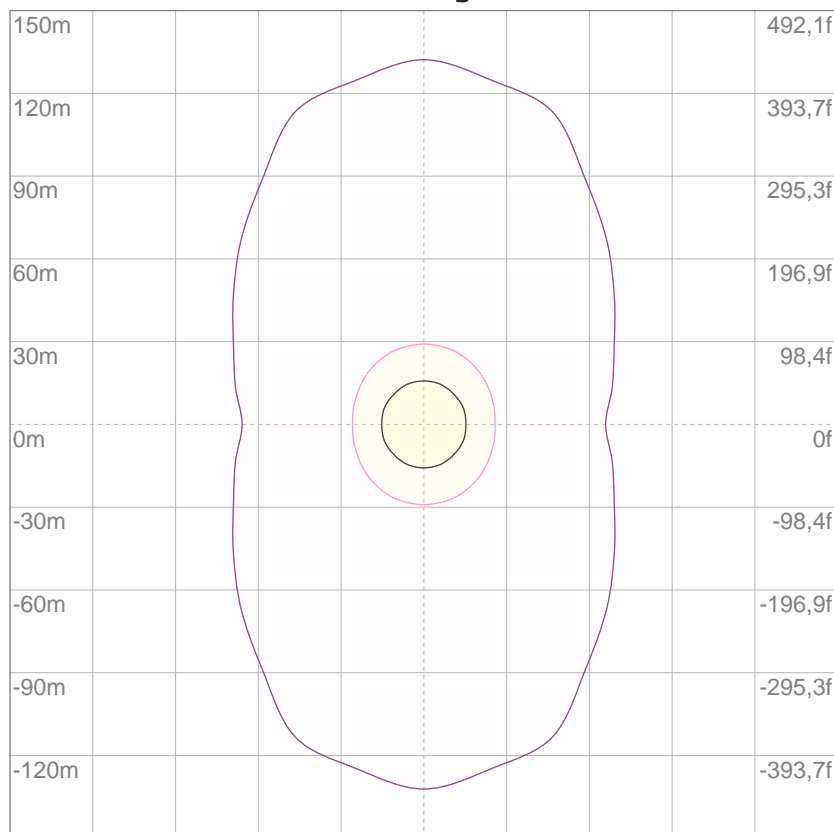
iso-candela diagram



10%	37 cd
20%	73 cd
30%	110 cd
40%	147 cd
50%	184 cd
60%	220 cd
70%	257 cd
80%	294 cd
90%	330 cd

Conditions:
Number of c-planes: 16
Candela at center: 367 cd

iso-lux diagram



3%	0,110 lx
5%	0,184 lx
10%	0,367 lx
30%	1,10 lx
50%	1,84 lx

Conditions:
Number of c-planes: 16
Lux at center: 3,67 lx

Lux distribution on a surface when lamp is mounted at 10 meters from the surface.

Mounting height: 10 meters

Potência

Voltagem: 12,0 V
Corrente: 1,56 A
Frequência: 0 Hz
FP: 1,0