

## 9002N SLED9002N BRANCA FITA 14,4WM 3000K 80 - 1m



Luminária linear de embutir em forro de gesso ou Dry-wall com iluminação difusa. Corpo em alumínio extrudado com acabamento na cor branca. Difusor em acrílico extrudado leitoso. Indicado para residência, recepção, escritório etc.

Fluxo luminoso – 664 lm/m

Potência – 15,8 W/m

Intensidade pico – 264cd

CCT – 2881K



IRC – 81,4

Coordenada CIE 1931 – x- 0,443 y- 0,401

A x L - 31x29

Peso - 0,35kg/m

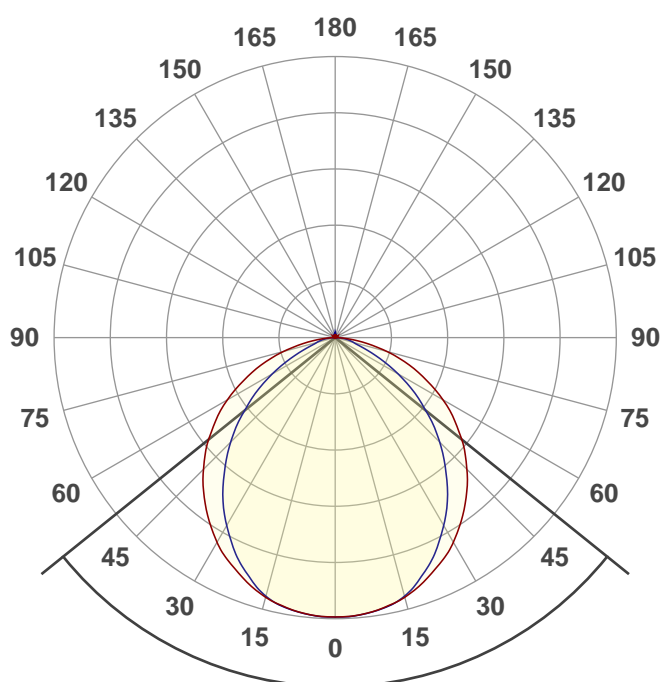
IP - 20 - Uso Interno

IK - 00 – Não aplicável

Alimentação - 12vdc

Data do ensaio

10/03/2022 15:20:49



Facho de abertura

**102,3°**

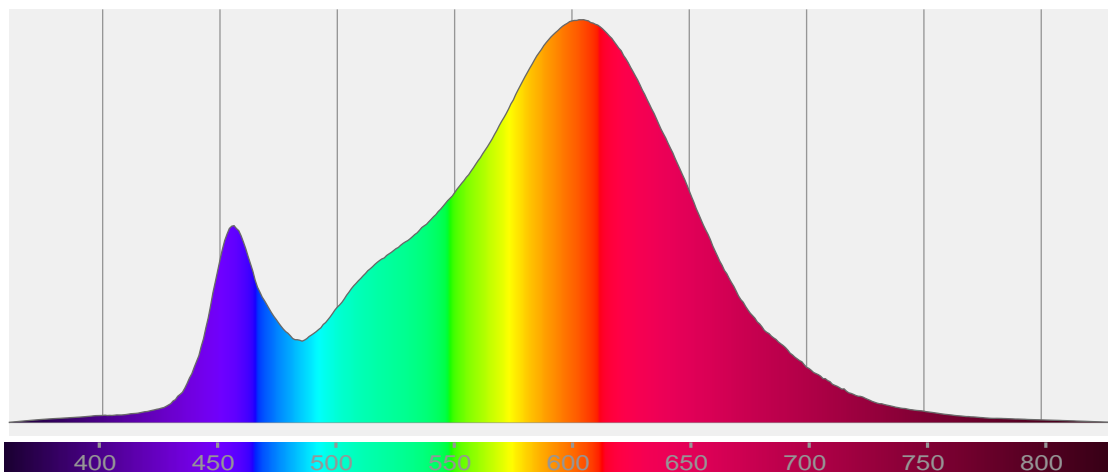
**Rf 83,6**

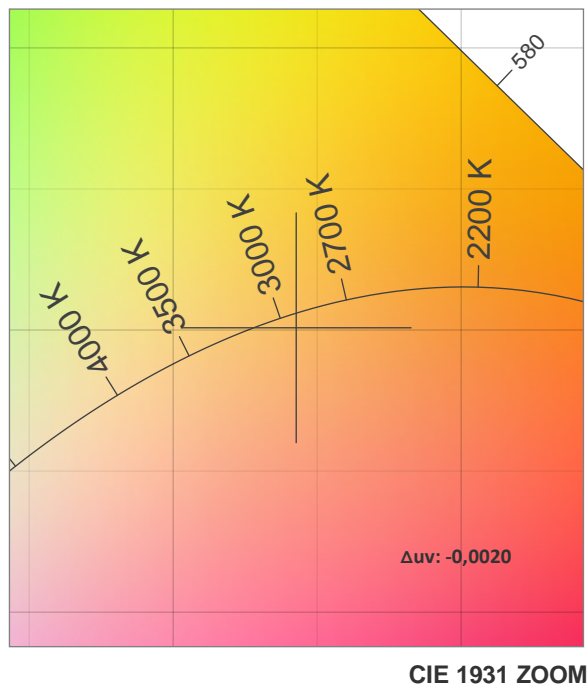
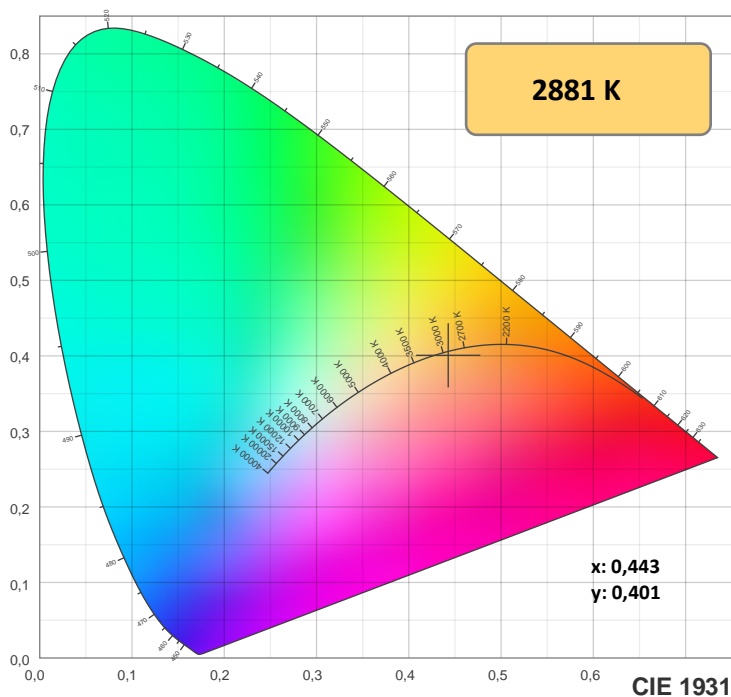
Fidelity index Rf

**Rg 94,4**

Gamut index Rg

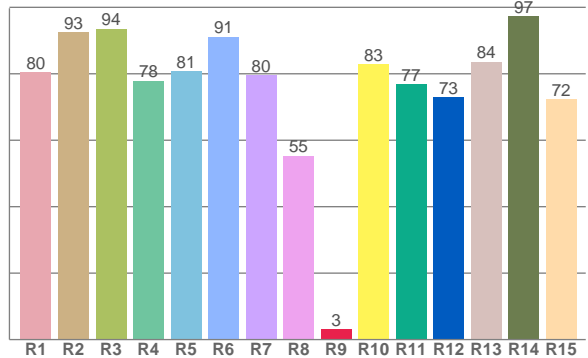
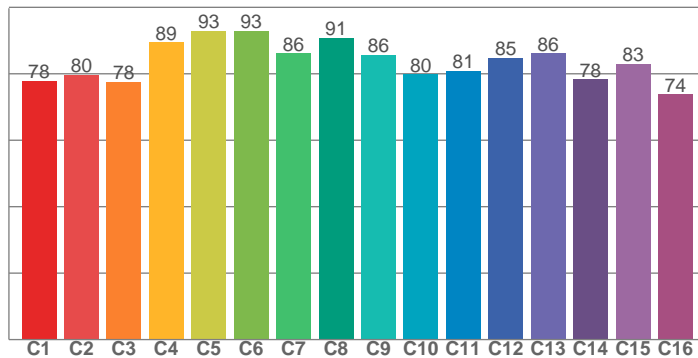
Hue Bin	R <sub>f</sub>	Shifts (%)	
		Chroma	Hue
1	78	-12%	1%
2	80	-8%	8%
3	78	-3%	11%
4	89	-1%	5%
5	93	1%	3%
6	93	1%	-3%
7	86	-6%	-5%
8	91	-5%	0%
9	86	-6%	6%
10	80	-3%	12%
11	81	1%	14%
12	85	7%	2%
13	86	5%	-9%
14	78	4%	-17%
15	83	-5%	-9%
16	74	-10%	-17%





TM-30: 83,6

CRI: 81,4 (R1-R8)



CRIRA R1-R8 / CRIR R1-R15

R1	R2	R3	R4	R5	R6	R7	R8	R9	R10	R11	R12	R13	R14	R15
80,5	92,6	93,6	77,9	80,7	91,1	79,6	55,3	3,1	83,0	76,8	72,9	83,6	97,3	72,3

TM30 valores C. 16 valores extraídos dos 99.

C1	C2	C3	C4	C5	C6	C7	C8	C9	C10	C11	C12	C13	C14	C15	C16
77,8	79,7	77,6	89,5	92,9	92,9	86,1	90,7	85,7	79,8	80,8	84,9	86,2	78,4	83,0	73,9

## Parametros de cor

Temperatura de cor	Índice de reprodução de cor	Reprodução de cor vermelho R9	Color fidelity	Color gamut	Color quality scale	Coordenada de cor cie 1931	Coordenada de cor cie 1931	Coordenada de cor	Coordenada de cor	Color deviation from black body
CCT	IRC	CRI R9	TM30 Rf	TM30 Rg	CQS	x	y	u	v	Δuv
2881 K	81,4	3,1	83,6	94,4	80,6	0,443	0,401	0,256	0,347	-0,0020

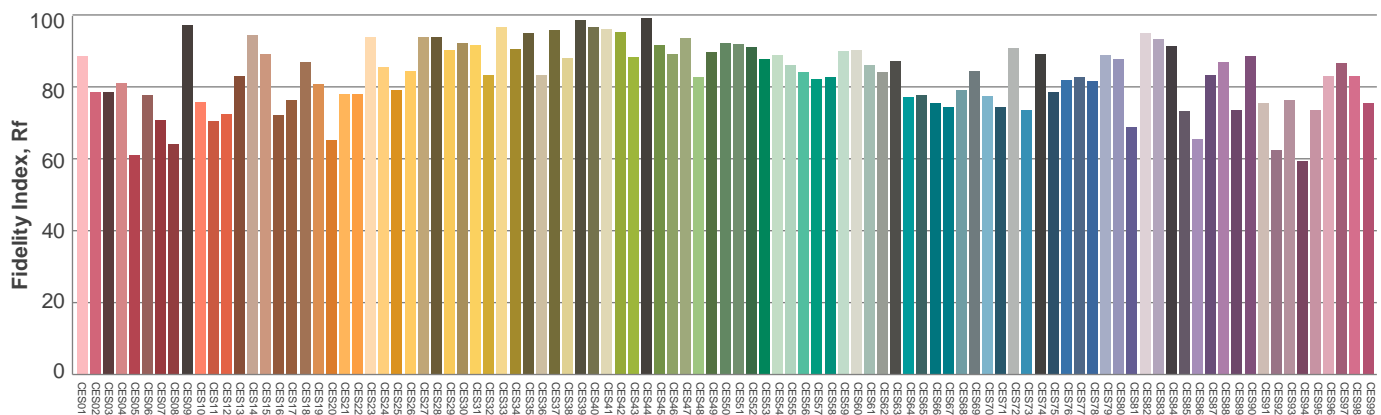
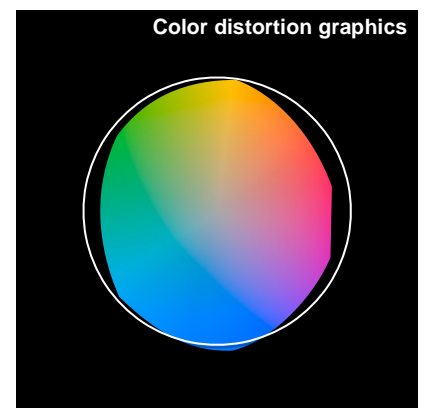
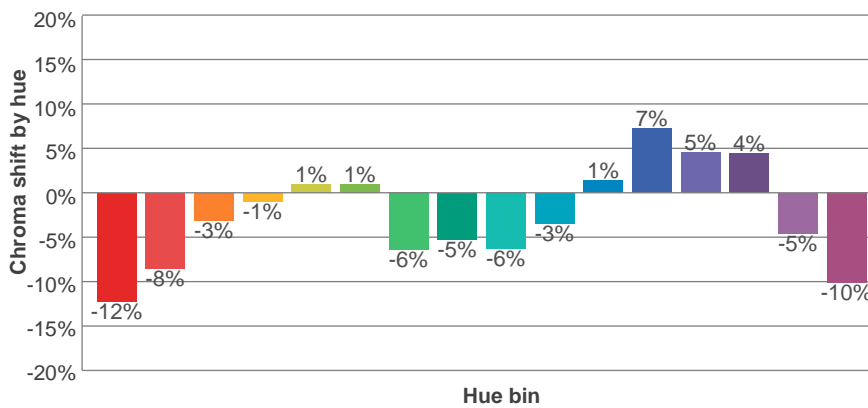
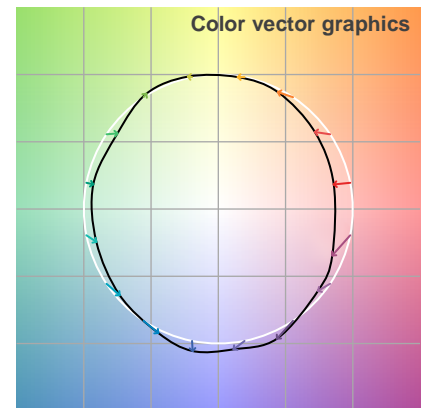
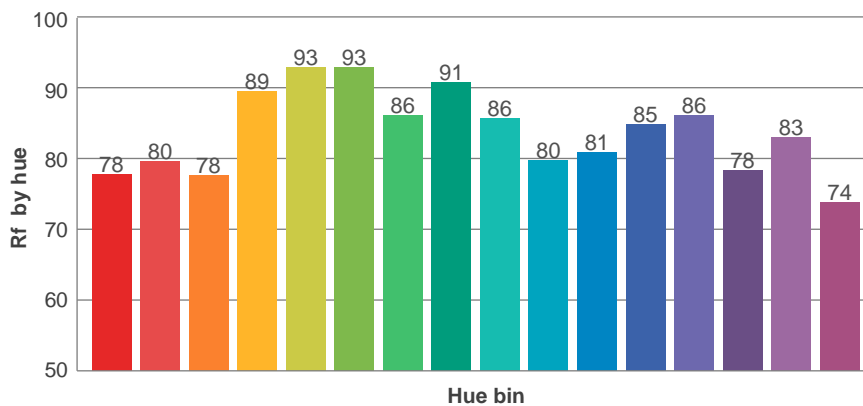
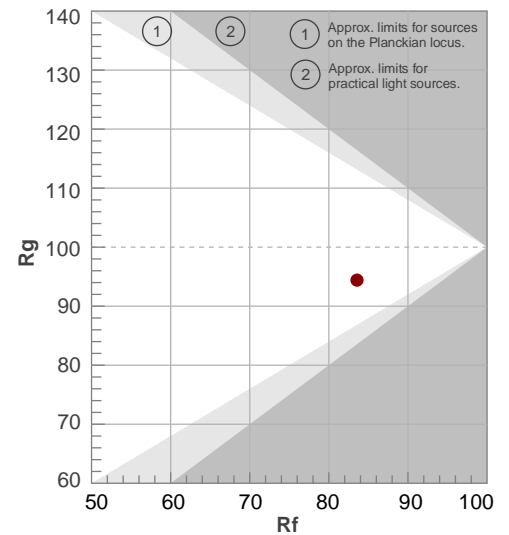
**Rf 83,6**

Fidelity index Rf

**Rg 94,4**

Gamut index Rg

Hue Bin	R <sub>f</sub>	Shifts (%)	
		Chroma	Hue
1	78	-12%	1%
2	80	-8%	8%
3	78	-3%	11%
4	89	-1%	5%
5	93	1%	3%
6	93	1%	-3%
7	86	-6%	-5%
8	91	-5%	0%
9	86	-6%	6%
10	80	-3%	12%
11	81	1%	14%
12	85	7%	2%
13	86	5%	-9%
14	78	4%	-17%
15	83	-5%	-9%
16	74	-10%	-17%



Avaliação todas as amostras de cores

Glare Evaluation According to UGR

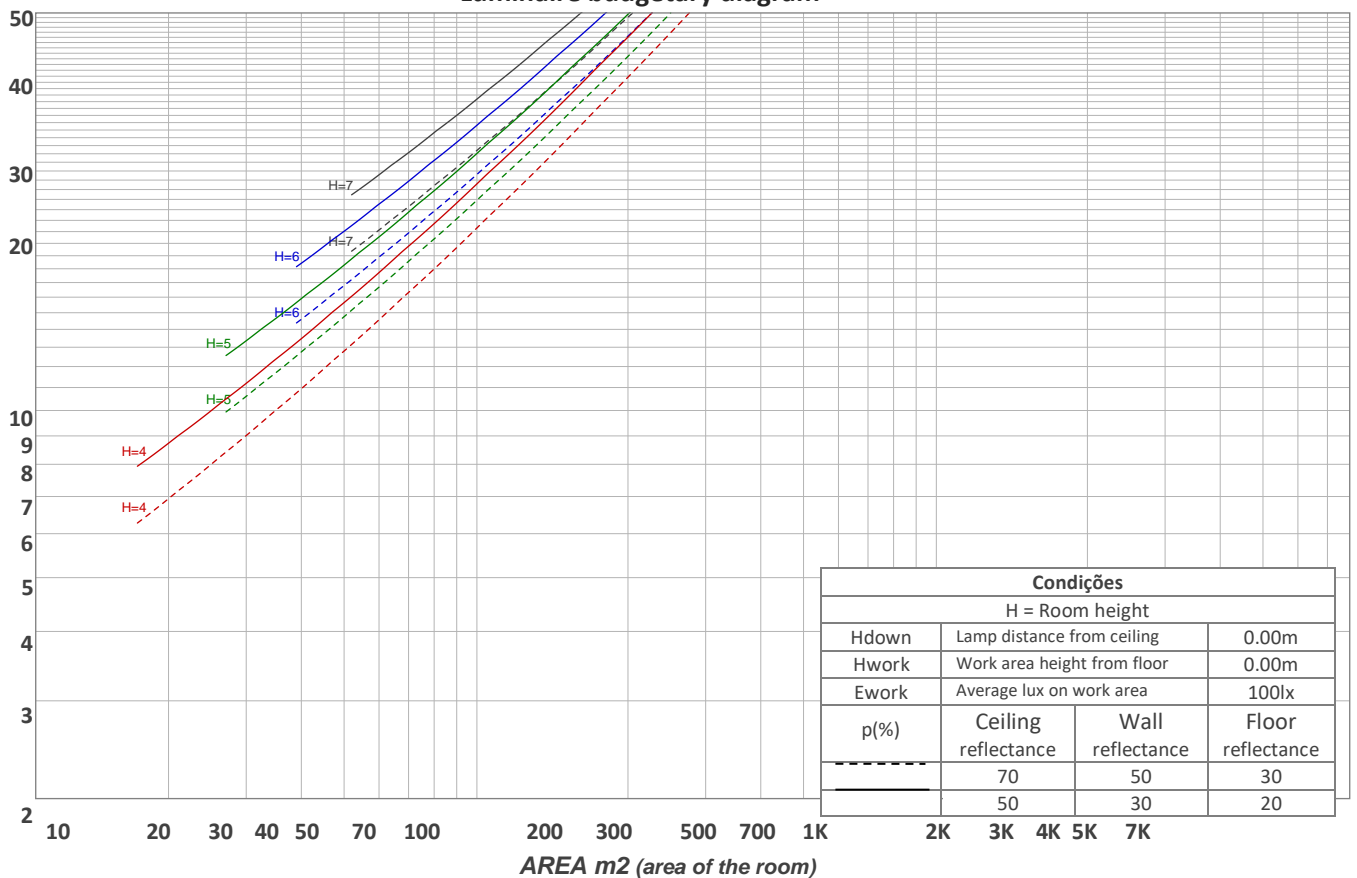
p Ceiling		70	70	50	50	30	70	70	50	50	30
p Walls		50	30	50	30	30	50	30	50	30	30
p Floor		20	20	20	20	20	20	20	20	20	20
Room size X    Y		Viewing direction at right angles to lamp axis					Viewing direction parallel to lamp axis				
2H	2H	22,1	23,3	22,4	23,6	23,8	20,1	21,2	20,3	21,5	21,8
	3H	23,6	24,8	24,0	25,1	25,3	20,6	21,8	21,0	22,1	22,3
	4H	24,2	25,3	24,6	25,6	25,9	20,8	21,9	21,2	22,2	22,5
	6H	24,7	25,6	25,0	25,9	26,3	21,0	22,0	21,4	22,3	22,7
	8H	24,8	25,7	25,1	26,0	26,5	21,1	22,1	21,5	22,4	22,8
	12H	24,8	25,7	25,2	26,1	26,6	21,1	22,1	21,5	22,4	22,9
4H	2H	22,4	23,5	22,8	23,8	24,1	20,7	21,8	21,1	22,1	22,4
	3H	24,1	25,0	24,5	25,4	25,9	21,5	22,4	21,9	22,8	23,2
	4H	24,8	25,6	25,2	26,0	26,6	21,7	22,5	22,1	23,0	23,5
	6H	25,3	26,1	25,8	26,4	26,8	21,9	22,7	22,4	23,1	23,5
	8H	25,4	26,1	25,9	26,5	26,9	22,0	22,8	22,6	23,2	23,6
	12H	25,5	26,1	26,0	26,6	27,1	22,1	22,7	22,6	23,2	23,7
8H	4H	24,8	25,5	25,3	25,9	26,3	21,9	22,7	22,4	23,0	23,4
	6H	25,4	25,9	25,9	26,4	27,0	22,3	22,8	22,8	23,3	23,9
	8H	25,6	26,1	26,1	26,6	27,3	22,5	23,0	23,0	23,5	24,2
	12H	25,7	26,1	26,3	26,7	27,3	22,6	23,0	23,2	23,6	24,2
12H	4H	24,7	25,3	25,2	25,8	26,3	21,9	22,5	22,4	23,0	23,5
	6H	25,4	25,9	25,9	26,4	27,1	22,4	22,8	22,9	23,4	24,0
	8H	25,6	26,0	26,2	26,5	27,1	22,6	23,0	23,2	23,5	24,1
Variation of the observer position for the luminaire distance S											
S = 1.0H		0,1 / -0,1					0,2 / -0,3				
S = 1.5H		0,2 / -0,3					0,4 / -0,7				
S = 2.0H		0,6 / -0,8					1,0 / -1,5				
Standard table		n/a					n/a				
Correction summand		n/a					n/a				
Corrected glare indices referring to 664 lm total luminous flux											

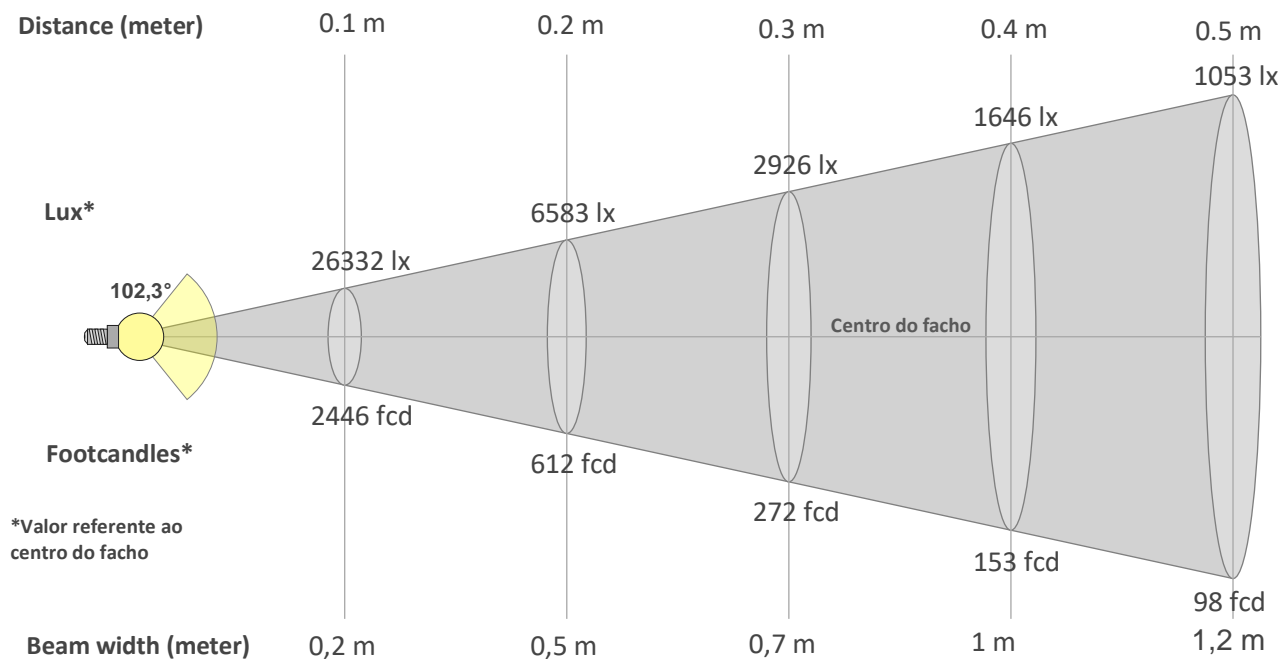
**Coeficiente de utilização**

Ceiling reflectance	80				70				50			30			10			0
Wall reflectance	70	50	30	10	70	50	30	10	50	30	10	50	30	10	50	30	10	0
Floor reflectance	20	20	20	20	20	20	20	20	20	20	20	20	20	20	20	20	20	0
RCR	(RCR: Room Cavity Ratio) Room Values are expressed as percentage of Lumens delivered to the task surface																	
0	119	119	119	119	116	116	116	116	110	110	110	105	105	105	101	101	101	99
1	109	105	101	97	106	103	99	96	98	95	92	94	92	89	90	88	86	84
2	100	92	86	81	97	90	84	79	87	82	77	83	79	75	80	77	74	71
3	92	82	74	68	89	80	73	67	77	71	66	74	69	64	71	67	63	61
4	84	73	64	58	82	71	63	57	69	62	57	66	60	56	64	59	55	53
5	78	65	57	50	75	64	56	50	62	55	49	60	53	49	58	52	48	46
6	72	59	50	44	70	58	50	44	56	49	43	54	48	43	53	47	42	40
7	67	54	45	39	65	53	45	39	51	44	39	50	43	38	48	42	38	36
8	62	49	41	35	61	48	40	35	47	40	35	45	39	34	44	38	34	32
9	58	45	37	32	57	44	37	32	43	36	31	42	36	31	41	35	31	29
10	55	42	34	29	53	41	34	29	40	33	28	39	33	28	38	32	28	26

**Quantidade de luminárias**

**Luminaire budgetary diagram**





### Beam intensities from 1-20m

1m	2m	3m	4m	5m	6m	7m	8m	9m	10m	11m	12m	13m	14m	15m	16m	17m	18m	19m	20m
3,3ft	6,6ft	9,8ft	13,1ft	16,4ft	19,7ft	23ft	26,2ft	29,5ft	32,8ft	36,1ft	39,4ft	42,7ft	45,9ft	49,2ft	52,5ft	55,8ft	59,1ft	62,3ft	65,6ft
263lx	66lx	29lx	16lx	11lx	7lx	5lx	4lx	3lx	3lx	2lx	2lx	2lx	1lx	1lx	1lx	1lx	1lx	1lx	1lx
24,5fcd	6,1fcd	2,7fcd	1,5fcd	1fcd	0,7fcd	0,5fcd	0,4fcd	0,3fcd	0,2fcd	0,2fcd	0,2fcd	0,1fcd	0,1fcd	0,1fcd	0,1fcd	0,1fcd	0,1fcd	0,1fcd	0,1fcd

### Intensities in 0° c-plane

0°	5°	10°	15°	20°	25°	30°	35°	40°	45°	50°	55°	60°	65°	70°	75°	80°	85°	90°	95°
263	262	259	253	245	234	223	208	192	175	158	138	117	95	73	51	29	11	2	1
100%	100%	98%	96%	93%	89%	85%	79%	73%	67%	60%	52%	45%	36%	28%	19%	11%	4%	1%	1%

### Intensities in 90° c-plane

0°	5°	10°	15°	20°	25°	30°	35°	40°	45°	50°	55°	60°	65°	70°	75°	80°	85°	90°	95°
263	262	259	252	239	223	204	184	162	139	115	92	68	46	28	18	13	6	1	1
100%	100%	98%	96%	91%	85%	78%	70%	61%	53%	44%	35%	26%	18%	11%	7%	5%	2%	0%	0%

### Intensities in 180° c-plane

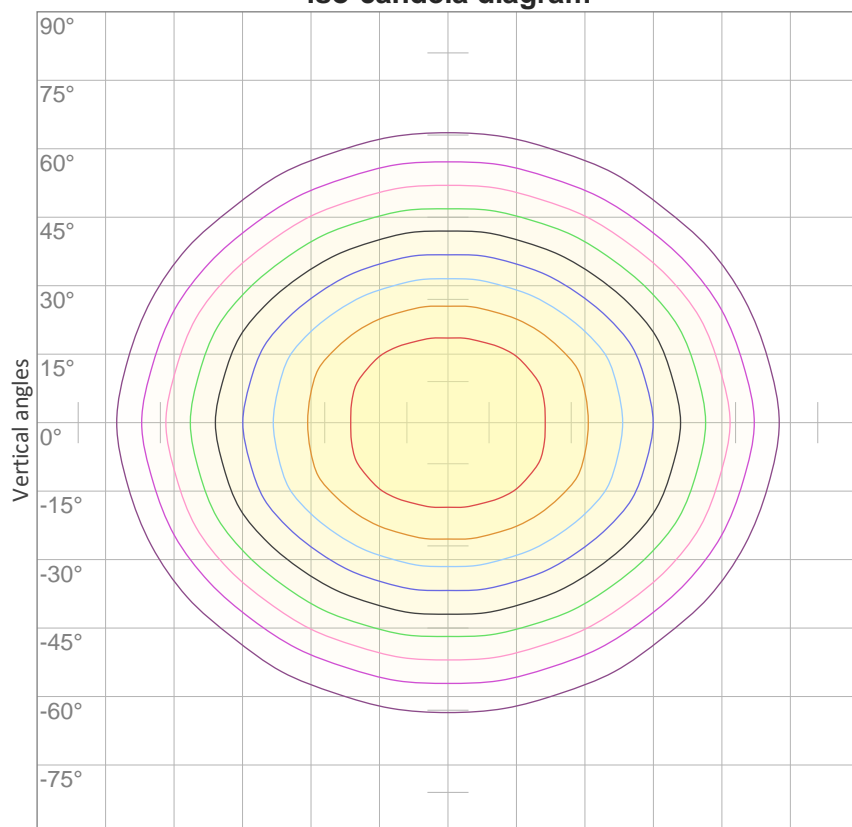
0°	5°	10°	15°	20°	25°	30°	35°	40°	45°	50°	55°	60°	65°	70°	75°	80°	85°	90°	95°
263	262	259	253	245	234	223	208	192	175	158	138	117	95	73	51	29	11	2	1
100%	100%	98%	96%	93%	89%	85%	79%	73%	67%	60%	52%	45%	36%	28%	19%	11%	4%	1%	1%

### Intensities in 270° c-plane

0°	5°	10°	15°	20°	25°	30°	35°	40°	45°	50°	55°	60°	65°	70°	75°	80°	85°	90°	95°
263	262	259	252	239	223	204	184	162	139	115	92	68	46	28	18	13	6	1	1
100%	100%	98%	96%	91%	85%	78%	70%	61%	53%	44%	35%	26%	18%	11%	7%	5%	2%	0%	0%

Beam angle 50%	Field angle 10%	Cutoff angle 2,5%	Intensity ratio in 120° cone	Intensity ratio in 90° cone
102,3°	149,6°	170,6°	82,6%	58,4%

**iso-candela diagram**



Horizontal angles

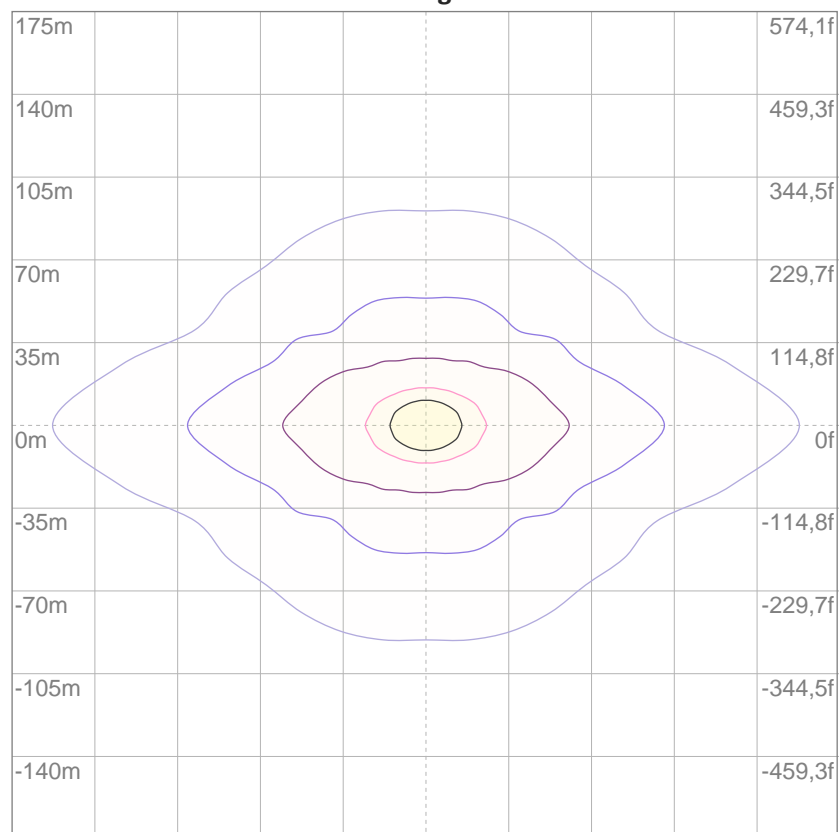
10%	26 cd
20%	53 cd
30%	79 cd
40%	105 cd
50%	132 cd
60%	158 cd
70%	184 cd
80%	211 cd
90%	237 cd

Conditions:

Number of c-planes: 16

Candela at center: 263 cd

**iso-lux diagram**



Mounting height: 10 meters

3%	79,0m lx
5%	0,132 lx
10%	0,263 lx
30%	0,790 lx
50%	1,32 lx

Conditions:

Number of c-planes: 16

Lux at center: 2,63 lx

*Lux distribution on a surface when lamp is mounted at 10 meters from the surface.*

**Potência**


**Vttagem: 12,0 V**

**Corrente: 1,32 A**

**Frequência: 0 Hz**

**FP: 0,99**

**THD**



**THD corrente: n/a**

**THD tensão: n/a**